

# Classic 2025-26

Monday 6:30 pm

## Big Apple Fun Center

Lanes 1 - 12

President: Doug Giles is on Lane 5 (308)627-5683  
 Vice President: Austin Longmore is on Lane 11 (308)233-1251  
 Secretary/Treasurer: Gary Hatcher is on Lane 3 (308)238-3914

### Team Standings

| Place | #  | Team Name                | Points Won | Points Lost | %Won | Pins + HDCP | Scratch Pins | Avg p/gm | High Game | High Sers | HDCP Game | HDCP Sers |
|-------|----|--------------------------|------------|-------------|------|-------------|--------------|----------|-----------|-----------|-----------|-----------|
| 1     | 4  | AB Service & Repair      | 96         | 24          | 80.0 | 42587       | 33788        | 866      | 1038      | 2961      | 1255      | 3651      |
| 2     | 7  | Kennedy Arborcare        | 88         | 32          | 73.3 | 42371       | 33194        | 851      | 962       | 2723      | 1213      | 3413      |
| 3     | 6  | Crash Test Brisbins      | 77         | 43          | 64.2 | 42156       | 38295        | 981      | 1173      | 3192      | 1288      | 3537      |
| 4     | 11 | Kirkland Siding          | 72½        | 47½         | 60.4 | 42231       | 34425        | 882      | 1001      | 2904      | 1207      | 3522      |
| 5     | 10 | Jack Lederman Co.        | 67         | 53          | 55.8 | 42051       | 33297        | 853      | 944       | 2725      | 1200      | 3493      |
| 6     | 5  | West                     | 60½        | 59½         | 50.4 | 42262       | 34393        | 881      | 990       | 2837      | 1207      | 3539      |
| 7     | 9  | Little Mexico Restaurant | 52         | 68          | 43.3 | 41732       | 28673        | 735      | 825       | 2380      | 1154      | 3406      |
| 8     | 2  | Cornhusker Ag/Rising Ag  | 51         | 69          | 42.5 | 41814       | 35172        | 901      | 1058      | 2913      | 1237      | 3450      |
| 9     | 3  | Common Cents Bookkeeping | 47         | 73          | 39.2 | 42009       | 34986        | 897      | 1007      | 2877      | 1212      | 3479      |
| 10    | 8  | Sorensen Group           | 37         | 83          | 30.8 | 41916       | 36489        | 935      | 1052      | 3012      | 1164      | 3425      |
| 11    | 12 | Peerless Machine         | 26½        | 93½         | 22.1 | 42229       | 28255        | 724      | 887       | 2408      | 1293      | 3626      |
| 12    | 1  | Draw Team                | 45½        | 74½         |      | 41984       | 33842        | 867      | 1070      | 3010      | 1293      | 3626      |

### Review of Last Week's Bowling.....

| Lanes | Team Name           | HDCP -1- | HDCP -2- | HDCP -3- | HDCP Total | Last Wk WON | Team Name                   | HDCP -1- | HDCP -2- | HDCP -3- | HDCP Total | Last Wk WON |
|-------|---------------------|----------|----------|----------|------------|-------------|-----------------------------|----------|----------|----------|------------|-------------|
| 1-2   | Draw Team           | 1042     | 1009     | 1067     | 3118       | 19          | <---> Cornhusker Ag/Rising  | 1033     | 1006     | 1107     | 3146       | 21          |
| 3-4   | Crash Test Brisbins | 1124     | 1151     | 1148     | 3423       | 13          | <---> West                  | 1207     | 1205     | 1127     | 3539       | 27          |
| 5-6   | Peerless Machine    | 1111     | 1101     | 982      | 3194       | 2           | <---> Kirkland Siding       | 1154     | 1207     | 1161     | 3522       | 38          |
| 7-8   | AB Service & Repair | 1141     | 1193     | 1025     | 3359       | 29          | <---> Common Cents Bookk    | 1042     | 1009     | 1067     | 3118       | 11          |
| 9-10  | Sorensen Group      | 1048     | 1122     | 1031     | 3201       | 7           | <---> Kennedy Arborcare     | 1116     | 1144     | 1114     | 3374       | 33          |
| 11-12 | Jack Lederman Co.   | 1120     | 1053     | 1118     | 3291       | 16          | <---> Little Mexico Restaur | 1037     | 1144     | 1125     | 3306       | 24          |

### Lane Assignments

|            | 1-2   | 3-4   | 5-6   | 7-8   | 9-10  | 11-12 |
|------------|-------|-------|-------|-------|-------|-------|
| Wk14 12/08 | 1- 7  | 5- 4  | 8- 10 | 2- 6  | 11- 9 | 3- 12 |
| Wk15 12/15 | 1- 10 | 3- 9  | 7- 6  | 4- 11 | 12- 5 | 2- 8  |
| Wk16 12/22 | 1- 3  | 12- 7 | 2- 9  | 8- 5  | 4- 10 | 6- 11 |

### Last Week's Top Scores

| Team Scratch Game |                          | Team Scratch Series |                          | Team Handicap Game |                          | Team Handicap Series |                     |
|-------------------|--------------------------|---------------------|--------------------------|--------------------|--------------------------|----------------------|---------------------|
| 1062              | Crash Test Brisbins      | 3156                | Crash Test Brisbins      | 1207               | West                     | 3539                 | West                |
| 1038              | AB Service & Repair      | 2946                | Sorensen Group           | 1207               | Kirkland Siding          | 3522                 | Kirkland Siding     |
| 1037              | Sorensen Group           | 2904                | Kirkland Siding          | 1193               | AB Service & Repair      | 3423                 | Crash Test Brisbin  |
| 1001              | Kirkland Siding          | 2894                | AB Service & Repair      | 1151               | Crash Test Brisbins      | 3374                 | Kennedy Arborcare   |
| 973               | West                     | 2837                | West                     | 1144               | Kennedy Arborcare        | 3359                 | AB Service & Repai  |
| 932               | Cornhusker Ag/Rising Ag  | 2723                | Kennedy Arborcare        | 1144               | Little Mexico Restaurant | 3306                 | Little Mexico Resta |
| 927               | Kennedy Arborcare        | 2621                | Cornhusker Ag/Rising Ag  | 1122               | Sorensen Group           | 3291                 | Jack Lederman Co.   |
| 892               | Jack Lederman Co.        | 2607                | Jack Lederman Co.        | 1120               | Jack Lederman Co.        | 3201                 | Sorensen Group      |
| 876               | Common Cents Bookkeepi   | 2545                | Common Cents Bookkeepi   | 1111               | Peerless Machine         | 3194                 | Peerless Machine    |
| 798               | Little Mexico Restaurant | 2268                | Little Mexico Restaurant | 1107               | Cornhusker Ag/Rising Ag  | 3146                 | Cornhusker Ag/Risi  |
| 768               | Peerless Machine         | 2165                | Peerless Machine         | 1067               | Common Cents Bookkeepi   | 3118                 | Common Cents Bo     |
| Scratch Game      |                          | Scratch Series      |                          | Handicap Game      |                          | Handicap Series      |                     |
| 279               | Justin Swanek            | 727                 | Justin Swanek            | 287                | Justin Swanek            | 751                  | Justin Swanek       |
| 268               | Jerred Johnson           | 703                 | Jerred Johnson           | 285                | Lane Riffey              | 745                  | Brandon Conyers     |
| 249               | Carter Hollis            | 677                 | Ryan Walton              | 279                | Mike McCollough          | 735                  | Bob Stevens         |
| 248               | Ryan Walton              | 669                 | Dan Schmidt              | 276                | Jerred Johnson           | 733                  | Lane Riffey         |
| 244               | Logan Albright           | 655                 | Brandon Conyers          | 273                | Logan Albright           | 730                  | Bill Kirkland       |
| 244               | Greg Pettit              | 643                 | Jeremy Sklenar           | 265                | Brandon Conyers          | 727                  | Jerred Johnson      |
| 243               | Lane Riffey              | 635                 | Chuck Brisbin            | 264                | Ivan Stones              | 725                  | Ivan Stones         |
| 243               | Masato Sugita            | 631                 | Masato Sugita            | 263                | Mike Brown               | 723                  | Bobby Turner Jr     |
| 235               | Brandon Conyers          | 626                 | Tom Richmond             | 262                | Carter Hollis            | 720                  | Dan Schmidt         |
| 234               | Mike Brown               | 621                 | Jared Samuelson          | 261                | Masato Sugita            | 699                  | Mike McCollough     |

**Season High Scores**

| <u>Team Scratch Game</u> |                          | <u>Team Scratch Series</u> |                          | <u>Team Handicap Game</u> |                          | <u>Team Handicap Series</u> |                     |
|--------------------------|--------------------------|----------------------------|--------------------------|---------------------------|--------------------------|-----------------------------|---------------------|
| 1173                     | Crash Test Brisbins      | 3192                       | Crash Test Brisbins      | 1293                      | Peerless Machine         | 3651                        | AB Service & Repai  |
| 1058                     | Cornhusker Ag/Rising Ag  | 3012                       | Sorensen Group           | 1288                      | Crash Test Brisbins      | 3626                        | Peerless Machine    |
| 1052                     | Sorensen Group           | 2961                       | AB Service & Repair      | 1255                      | AB Service & Repair      | 3539                        | West                |
| 1038                     | AB Service & Repair      | 2913                       | Cornhusker Ag/Rising Ag  | 1237                      | Cornhusker Ag/Rising Ag  | 3537                        | Crash Test Brisbin  |
| 1007                     | Common Cents Bookkeepi   | 2904                       | Kirkland Siding          | 1213                      | Kennedy Arborcare        | 3522                        | Kirkland Siding     |
| 1001                     | Kirkland Siding          | 2877                       | Common Cents Bookkeepi   | 1212                      | Common Cents Bookkeepi   | 3493                        | Jack Lederman Co.   |
| 990                      | West                     | 2837                       | West                     | 1207                      | West                     | 3479                        | Common Cents Bo     |
| 962                      | Kennedy Arborcare        | 2725                       | Jack Lederman Co.        | 1207                      | Kirkland Siding          | 3450                        | Cornhusker Ag/Risi  |
| 944                      | Jack Lederman Co.        | 2723                       | Kennedy Arborcare        | 1200                      | Jack Lederman Co.        | 3425                        | Sorensen Group      |
| 887                      | Peerless Machine         | 2408                       | Peerless Machine         | 1164                      | Sorensen Group           | 3413                        | Kennedy Arborcare   |
| 825                      | Little Mexico Restaurant | 2380                       | Little Mexico Restaurant | 1154                      | Little Mexico Restaurant | 3406                        | Little Mexico Resta |
| <u>Scratch Game</u>      |                          | <u>Scratch Series</u>      |                          | <u>Handicap Game</u>      |                          | <u>Handicap Series</u>      |                     |
| 280                      | Austin Longmore          | 737                        | Ryan Walton              | 325                       | Brooks Paul              | 827                         | Quentin Holliday    |
| 279                      | Justin Swaneck           | 734                        | Gordon Thiessen          | 323                       | Justin Hodges            | 821                         | Cody Bristow        |
| 279                      | Ryan Walton              | 727                        | Justin Swaneck           | 321                       | Quentin Holliday         | 818                         | Dan Schmidt         |
| 279                      | Greg Pettit              | 727                        | Jared Samuelson          | 312                       | Brandon Conyers          | 799                         | Brooks Paul         |
| 277                      | Brandon Conyers          | 716                        | Dan Schmidt              | 306                       | Austin Longmore          | 799                         | Trevor Hibberd      |
| 269                      | Jeremy Dalland           | 705                        | Greg Pettit              | 303                       | Bobby Turner Jr          | 791                         | Josh Krolikowski    |
| 269                      | Justin Hodges            | 703                        | Jerred Johnson           | 298                       | Cody Bristow             | 779                         | Hewitt Moyer        |
| 269                      | Carter Hollis            | 701                        | Josh Krolikowski         | 292                       | Greg Pettit              | 769                         | Jason Stubbs        |
| 268                      | Jerred Johnson           | 699                        | Jeremy Dalland           | 291                       | Matthew Doerr            | 767                         | Ryan Walton         |
| 268                      | Gordon Thiessen          | 698                        | Cody Bristow             | 290                       | Chuck Brisbin            | 766                         | Austin Longmore     |
|                          |                          |                            |                          | 290                       | Jeff Fruhling            | 766                         | Lane Riffey         |

**Team Rosters**

**1 - Draw Team**

| <u>Name</u> | <u>Avg</u> | <u>HDCP</u> | <u>Pins</u> | <u>Gms</u> | <u>Points Won</u> | <u>High Game</u> | <u>High Sers</u> | <u>HDCP Game</u> | <u>HDCP Sers</u> | <u>0's</u> | <u>200's</u> | <u>250's</u> | <u>0's</u> | <u>600's</u> | <u>700's</u> |
|-------------|------------|-------------|-------------|------------|-------------------|------------------|------------------|------------------|------------------|------------|--------------|--------------|------------|--------------|--------------|
|             |            |             |             | 30         | 19.5              | 203              | 536              | 269              | 732              | 29         | 1            | --           | 10         | --           | --           |
|             |            |             |             | 21         | 13.0              | 248              | 602              | 279              | 695              | 17         | 4            | --           | 6          | 1            | --           |
|             |            |             |             | 27         | 20.5              | 206              | 543              | 262              | 711              | 25         | 2            | --           | 9          | --           | --           |
|             |            |             |             | 30         | 22.0              | 256              | 662              | 290              | 761              | 23         | 5            | 2            | 6          | 4            | --           |
|             |            |             |             | 15         | 11.0              | 268              | 703              | 276              | 727              | 5          | 9            | 1            | 1          | 3            | 1            |
|             |            |             |             | 36         | 18.0              | 256              | 701              | 286              | 791              | 25         | 8            | 3            | 9          | 2            | 1            |
|             |            |             |             | 30         | 19.0              | 269              | 699              | 278              | 704              | 8          | 20           | 2            | 3          | 7            | --           |

**2 - Cornhusker Ag/Rising Ag**

| <u>Name</u>        | <u>Avg</u> | <u>HDCP</u> | <u>Pins</u> | <u>Gms</u> | <u>Points Won</u> | <u>High Game</u> | <u>High Sers</u> | <u>HDCP Game</u> | <u>HDCP Sers</u> | <u>0's</u> | <u>200's</u> | <u>250's</u> | <u>0's</u> | <u>600's</u> | <u>700's</u> |
|--------------------|------------|-------------|-------------|------------|-------------------|------------------|------------------|------------------|------------------|------------|--------------|--------------|------------|--------------|--------------|
| Doug Samuelson     | 139        | 76          | 2923        | 21         | 13.0              | 181              | 468              | 256              | 694              | 21         | --           | --           | 7          | --           | --           |
| Brent E. Hollis    | 145        | 70          | 1747        | 12         | 5.0               | 201              | 458              | 261              | 674              | 11         | 1            | --           | 4          | --           | --           |
| Javan D. Clement   | 183        | 32          | 3301        | 18         | 15.0              | 237              | 583              | 284              | 724              | 12         | 6            | --           | 6          | --           | --           |
| Danny Jeffryes     | 165        | 50          | 4459        | 27         | 14.0              | 215              | 589              | 261              | 709              | 24         | 3            | --           | 9          | --           | --           |
| Hewitt P. Moyer    | 182        | 33          | 4389        | 24         | 24.0              | 233              | 641              | 272              | 779              | 19         | 5            | --           | 6          | 2            | --           |
| Carter R. Hollis   | 202        | 13          | 4849        | 24         | 15.5              | 269              | 653              | 287              | 707              | 13         | 8            | 3            | 3          | 5            | --           |
| Jared J. Samuelson | 209        | 6           | 7535        | 36         | 19.5              | 264              | 727              | 272              | 751              | 14         | 21           | 1            | 3          | 8            | 1            |

**3 - Common Cents Bookkeeping**

| <u>Name</u>          | <u>Avg</u> | <u>HDCP</u> | <u>Pins</u> | <u>Gms</u> | <u>Points Won</u> | <u>High Game</u> | <u>High Sers</u> | <u>HDCP Game</u> | <u>HDCP Sers</u> | <u>0's</u> | <u>200's</u> | <u>250's</u> | <u>0's</u> | <u>600's</u> | <u>700's</u> |
|----------------------|------------|-------------|-------------|------------|-------------------|------------------|------------------|------------------|------------------|------------|--------------|--------------|------------|--------------|--------------|
| Ethan M. Mizner      | 152        | 63          | 2750        | 18         | 14.0              | 201              | 510              | 263              | 711              | 17         | 1            | --           | 6          | --           | --           |
| Justin M. Hodges     | 167        | 48          | 6539        | 39         | 22.0              | 269              | 588              | 323              | 750              | 34         | 4            | 1            | 13         | --           | --           |
| Shawn E. Mizner      | 176        | 39          | 5815        | 33         | 15.0              | 223              | 583              | 259              | 706              | 26         | 7            | --           | 11         | --           | --           |
| Michael G. Marcellus | 190        | 25          | 5724        | 30         | 10.0              | 233              | 623              | 260              | 705              | 20         | 10           | --           | 8          | 2            | --           |
| Tyler L. Mizner      | 188        | 27          | 6208        | 33         | 27.0              | 253              | 642              | 282              | 729              | 22         | 10           | 1            | 9          | 2            | --           |
| Austin M. Longmore   | 191        | 24          | 6898        | 36         | 26.0              | 280              | 688              | 306              | 766              | 21         | 14           | 1            | 9          | 3            | --           |

Classic 2025-26

4 - AB Service & Repair

| Name              | Avg | HDCP | Pins | Gms | Points Won | High Game | High Sers | HDCP Game | HDCP Sers | 0's | 200's | 250's | 0's | 600's | 700's |
|-------------------|-----|------|------|-----|------------|-----------|-----------|-----------|-----------|-----|-------|-------|-----|-------|-------|
| Kodie D. Kershner | 117 | 98   | 3865 | 33  | 22.0       | 161       | 418       | 267       | 730       | 33  | --    | --    | 11  | --    | --    |
| Cody D. Bristow   | 180 | 35   | 6493 | 36  | 23.5       | 257       | 698       | 298       | 821       | 26  | 8     | 2     | 9   | 3     | --    |
| Mike Brown        | 187 | 28   | 7305 | 39  | 22.5       | 234       | 618       | 263       | 735       | 25  | 14    | --    | 9   | 4     | --    |
| Sean A. McBride   | 136 | 79   | 3267 | 24  | 22.5       | 169       | 436       | 243       | 671       | 24  | --    | --    | 8   | --    | --    |
| Kurt L. Schmidt   | 197 | 18   | 4749 | 24  | 24.0       | 221       | 620       | 240       | 677       | 11  | 13    | --    | 3   | 5     | --    |
| Dan Schmidt       | 200 | 15   | 6613 | 33  | 23.5       | 248       | 716       | 281       | 818       | 15  | 18    | --    | 6   | 3     | 2     |

5 - West

| Name               | Avg | HDCP | Pins | Gms | Points Won | High Game | High Sers | HDCP Game | HDCP Sers | 0's | 200's | 250's | 0's | 600's | 700's |
|--------------------|-----|------|------|-----|------------|-----------|-----------|-----------|-----------|-----|-------|-------|-----|-------|-------|
| Bob Stevens        | 155 | 60   | 6048 | 39  | 20.5       | 193       | 546       | 256       | 735       | 39  | --    | --    | 13  | --    | --    |
| Johnny L. Nikkila  | 164 | 51   | 5937 | 36  | 27.0       | 204       | 557       | 255       | 719       | 33  | 3     | --    | 12  | --    | --    |
| Ivan D. Stones     | 157 | 58   | 5187 | 33  | 19.0       | 203       | 542       | 264       | 725       | 32  | 1     | --    | 11  | --    | --    |
| Gary D. Hatcher    | 165 | 50   | 3966 | 24  | 13.0       | 204       | 575       | 261       | 746       | 22  | 2     | --    | 8   | --    | --    |
| Justin R. Swanek   | 211 | 4    | 6336 | 30  | 23.0       | 279       | 727       | 287       | 751       | 9   | 18    | 3     | 3   | 6     | 1     |
| Gordon E. Thiessen | 225 | 0    | 4054 | 18  | 14.0       | 268       | 734       | 268       | 734       | 4   | 10    | 4     | --  | 4     | 2     |

6 - Crash Test Brisbins

| Name              | Avg   | HDCP | Pins | Gms | Points Won | High Game | High Sers | HDCP Game | HDCP Sers | 0's | 200's | 250's | 0's | 600's | 700's |
|-------------------|-------|------|------|-----|------------|-----------|-----------|-----------|-----------|-----|-------|-------|-----|-------|-------|
| Tom Richmond      | 195   | 20   | 6459 | 33  | 25.5       | 267       | 633       | 283       | 702       | 17  | 15    | 1     | 5   | 6     | --    |
| Jason D. Stubbs   | 180   | 35   | 6494 | 36  | 25.0       | 234       | 640       | 277       | 769       | 27  | 9     | --    | 10  | 2     | --    |
| Tom McLeod        | bk192 | 23   | 562  | 3   | 4.0        | 197       | 562       | 220       | 631       | 3   | --    | --    | 1   | --    | --    |
| Chuck M. Brisbin  | 197   | 18   | 7104 | 36  | 31.5       | 267       | 667       | 290       | 736       | 22  | 13    | 1     | 6   | 6     | --    |
| Scott A. Bauer    | 194   | 21   | 5843 | 30  | 17.0       | 258       | 661       | 279       | 712       | 20  | 7     | 3     | 7   | 3     | --    |
| Jeremy D. Sklenar | 214   | 1    | 1931 | 9   | 7.0        | 256       | 665       | 263       | 686       | 3   | 5     | 1     | --  | 3     | --    |
| Ryan E. Walton    | 211   | 4    | 7600 | 36  | 23.0       | 279       | 737       | 287       | 767       | 12  | 20    | 4     | 4   | 7     | 1     |

7 - Kennedy Arborcare

| Name               | Avg | HDCP | Pins | Gms | Points Won | High Game | High Sers | HDCP Game | HDCP Sers | 0's | 200's | 250's | 0's | 600's | 700's |
|--------------------|-----|------|------|-----|------------|-----------|-----------|-----------|-----------|-----|-------|-------|-----|-------|-------|
| Matthew J. Doerr   | 142 | 73   | 2986 | 21  | 6.0        | 217       | 528       | 291       | 750       | 20  | 1     | --    | 7   | --    | --    |
| Lee M. Dobish      | 124 | 91   | 373  | 3   | 1.0        | 153       | 373       | 244       | 646       | 3   | --    | --    | 1   | --    | --    |
| Andrew J. Kennedy  | 140 | 75   | 4633 | 33  | 28.5       | 181       | 468       | 258       | 723       | 33  | --    | --    | 11  | --    | --    |
| Mike McCollough    | 153 | 62   | 3673 | 24  | 19.0       | 214       | 516       | 279       | 720       | 22  | 2     | --    | 8   | --    | --    |
| Brandon M. Conyers | 188 | 27   | 6790 | 36  | 20.0       | 277       | 655       | 312       | 745       | 23  | 11    | 2     | 9   | 3     | --    |
| Kevin L. Wise      | 182 | 33   | 6568 | 36  | 26.0       | 245       | 591       | 275       | 693       | 31  | 5     | --    | 12  | --    | --    |
| Masato M. Sugita   | 198 | 17   | 7733 | 39  | 29.0       | 246       | 661       | 263       | 715       | 21  | 18    | --    | 7   | 6     | --    |

8 - Sorensen Group

| Name               | Avg | HDCP | Pins | Gms | Points Won | High Game | High Sers | HDCP Game | HDCP Sers | 0's | 200's | 250's | 0's | 600's | 700's |
|--------------------|-----|------|------|-----|------------|-----------|-----------|-----------|-----------|-----|-------|-------|-----|-------|-------|
| Doug Giles         | 155 | 60   | 4667 | 30  | 19.5       | 203       | 536       | 269       | 732       | 29  | 1     | --    | 10  | --    | --    |
| Logan J. Albright  | 187 | 28   | 3947 | 21  | 13.0       | 248       | 602       | 279       | 695       | 17  | 4     | --    | 6   | 1     | --    |
| Chris R. Lytle     | 167 | 48   | 4521 | 27  | 20.5       | 206       | 543       | 262       | 711       | 25  | 2     | --    | 9   | --    | --    |
| Jeff A. Fruhling   | 185 | 30   | 5570 | 30  | 22.0       | 256       | 662       | 290       | 761       | 23  | 5     | 2     | 6   | 4     | --    |
| Jerred J. Johnson  | 212 | 3    | 3192 | 15  | 11.0       | 268       | 703       | 276       | 727       | 5   | 9     | 1     | 1   | 3     | 1     |
| Josh K. Krolkowski | 193 | 22   | 6978 | 36  | 18.0       | 256       | 701       | 286       | 791       | 25  | 8     | 3     | 9   | 2     | 1     |
| Jeremy J. Dalland  | 214 | 1    | 6423 | 30  | 19.0       | 269       | 699       | 278       | 704       | 8   | 20    | 2     | 3   | 7     | --    |

9 - Little Mexico Restaurant

| Name                | Avg | HDCP | Pins | Gms | Points Won | High Game | High Sers | HDCP Game | HDCP Sers | 0's | 200's | 250's | 0's | 600's | 700's |
|---------------------|-----|------|------|-----|------------|-----------|-----------|-----------|-----------|-----|-------|-------|-----|-------|-------|
| Trevor A. Roberts   | 149 | 66   | 3144 | 21  | 16.5       | 197       | 531       | 273       | 759       | 21  | --    | --    | 7   | --    | --    |
| Nolan P. Parr       | 143 | 72   | 2580 | 18  | 13.0       | 201       | 476       | 284       | 725       | 17  | 1     | --    | 6   | --    | --    |
| Cruz A. Evans       | 166 | 49   | 5509 | 33  | 20.0       | 207       | 561       | 254       | 699       | 31  | 2     | --    | 11  | --    | --    |
| Quentin S. Holliday | 144 | 71   | 5631 | 39  | 21.0       | 247       | 605       | 321       | 827       | 38  | 1     | --    | 12  | 1     | --    |
| JD Einspahr         | 128 | 87   | 3076 | 24  | 21.0       | 156       | 426       | 247       | 684       | 24  | --    | --    | 8   | --    | --    |
| Nathan Banks        | 160 | 55   | 1924 | 12  | 5.0        | 193       | 502       | 250       | 673       | 12  | --    | --    | 4   | --    | --    |
| Craig A. Schutt     | 152 | 63   | 5484 | 36  | 28.0       | 192       | 527       | 260       | 731       | 36  | --    | --    | 12  | --    | --    |

10 - Jack Lederman Co.

| Name              | Avg | HDCP | Pins | Gms | Points Won | High Game | High Sers | HDCP Game | HDCP Sers | 0's | 200's | 250's | 0's | 600's | 700's |
|-------------------|-----|------|------|-----|------------|-----------|-----------|-----------|-----------|-----|-------|-------|-----|-------|-------|
| Ron J. Studnicka  | 151 | 64   | 5922 | 39  | 28.5       | 188       | 525       | 257       | 738       | 39  | --    | --    | 13  | --    | --    |
| Trevor D. Hibberd | 172 | 43   | 5181 | 30  | 19.0       | 226       | 613       | 287       | 799       | 27  | 3     | --    | 9   | 1     | --    |
| Eric R. Zikmund   | 183 | 32   | 1650 | 9   | 2.0        | 211       | 585       | 229       | 639       | 7   | 2     | --    | 3   | --    | --    |
| Leroy H. Hoss     | 137 | 78   | 5352 | 39  | 25.5       | 174       | 478       | 259       | 739       | 39  | --    | --    | 13  | --    | --    |
| David D. Hibberd  | 183 | 32   | 7171 | 39  | 32.5       | 246       | 628       | 278       | 745       | 29  | 10    | --    | 10  | 3     | --    |
| Jarod D. Zikmund  | 205 | 10   | 8021 | 39  | 24.0       | 258       | 677       | 267       | 726       | 16  | 22    | 1     | 3   | 10    | --    |

11 - Kirkland Siding

| Name            | Avg | HDCP | Pins | Gms | Points Won | High Game | High Sers | HDCP Game | HDCP Sers | 0's | 200's | 250's | 0's | 600's | 700's |
|-----------------|-----|------|------|-----|------------|-----------|-----------|-----------|-----------|-----|-------|-------|-----|-------|-------|
| Bill Kirkland   | 148 | 67   | 5334 | 36  | 22.5       | 189       | 520       | 259       | 730       | 36  | --    | --    | 12  | --    | --    |
| Bobby Turner Jr | 174 | 41   | 6802 | 39  | 26.5       | 251       | 600       | 303       | 756       | 32  | 6     | 1     | 12  | 1     | --    |
| Lane E. Riffey  | 176 | 39   | 6867 | 39  | 21.0       | 243       | 625       | 288       | 766       | 29  | 10    | --    | 11  | 2     | --    |
| Keith J. Smith  | 179 | 36   | 7007 | 39  | 30.0       | 236       | 582       | 276       | 698       | 31  | 8     | --    | 13  | --    | --    |
| Brad M. Olson   | 201 | 14   | 7874 | 39  | 25.0       | 257       | 690       | 277       | 741       | 17  | 21    | 1     | 6   | 7     | --    |

12 - Peerless Machine

| Name               | Avg | HDCP | Pins | Gms | Points Won | High Game | High Sers | HDCP Game | HDCP Sers | 0's | 200's | 250's | 0's | 600's | 700's |
|--------------------|-----|------|------|-----|------------|-----------|-----------|-----------|-----------|-----|-------|-------|-----|-------|-------|
| Jacob M. Rodriguez | 110 | 105  | 2651 | 24  | 17.5       | 159       | 365       | 280       | 728       | 24  | --    | --    | 8   | --    | --    |
| John W. Paul       | 124 | 91   | 1871 | 15  | 7.0        | 157       | 397       | 253       | 684       | 15  | --    | --    | 5   | --    | --    |
| Brooks D. Paul     | 134 | 81   | 5240 | 39  | 22.5       | 233       | 523       | 325       | 799       | 38  | 1     | --    | 13  | --    | --    |
| Chris P. Drew      | 137 | 78   | 827  | 6   | 6.0        | 160       | 458       | 252       | 734       | 6   | --    | --    | 2   | --    | --    |
| Carter S. Krause   | 135 | 80   | 4890 | 36  | 23.5       | 193       | 493       | 272       | 754       | 36  | --    | --    | 12  | --    | --    |
| Alex J. Peden      | 167 | 48   | 6037 | 36  | 29.0       | 209       | 563       | 258       | 716       | 33  | 3     | --    | 12  | --    | --    |
| Jake Peden         | 172 | 43   | 6739 | 39  | 26.0       | 227       | 588       | 276       | 735       | 34  | 5     | --    | 13  | --    | --    |

Temporary Substitutes

| Name                 | Avg   | HDCP | Pins | Gms | Points Won | High Game | High Sers | HDCP Game | HDCP Sers | 0's | 200's | 250's | 0's | 600's | 700's |
|----------------------|-------|------|------|-----|------------|-----------|-----------|-----------|-----------|-----|-------|-------|-----|-------|-------|
| Nathan R. Canfield   | 180   | 35   | 541  | 3   | 1.0        | 222       | 541       | 257       | 646       | 2   | 1     | --    | 1   | --    | --    |
| Anthony C. Eigenberg | 183   | 32   | 6604 | 36  | 18.0       | 228       | 616       | 256       | 692       | 24  | 12    | --    | 10  | 2     | --    |
| Jason S. Feddersen   | bk217 | 0    | 610  | 3   | 1.0        | 215       | 610       | 215       | 610       | 1   | 2     | --    | --  | 1     | --    |
| Bruce A. Hatcher     | bk209 | 6    | 1235 | 6   | 4.0        | 229       | 619       | 235       | 637       | 3   | 3     | --    | --  | 2     | --    |
| Doug Houtz           | bk170 | 45   | 509  | 3   |            | 183       | 509       | 228       | 644       | 3   | --    | --    | 1   | --    | --    |
| Kirk E. Kossman      | bk169 | 46   | 460  | 3   | 1.0        | 166       | 460       | 212       | 598       | 3   | --    | --    | 1   | --    | --    |
| Greg A. Pettit       | 204   | 11   | 2449 | 12  | 9.0        | 279       | 705       | 292       | 744       | 6   | 5     | 1     | 2   | 1     | 1     |
| Jerry Schmitz        | bk183 | 32   | 1170 | 6   | 6.0        | 225       | 597       | 257       | 693       | 5   | 1     | --    | 2   | --    | --    |
| Bob G. Vogt          | bk164 | 51   | 543  | 3   | 3.0        | 204       | 543       | 255       | 696       | 2   | 1     | --    | 1   | --    | --    |
| Phillip O. White     | 106   | 109  | 640  | 6   | 6.0        | 124       | 324       | 231       | 645       | 6   | --    | --    | 2   | --    | --    |

High Individual Match Points

|                    |                     |                      |                    |
|--------------------|---------------------|----------------------|--------------------|
| 32.5 David Hibberd | 31.5 Chuck Brisbin  | 30 Keith Smith       | 29 Alex Peden      |
| 29 Masato Sugita   | 28.5 Andrew Kennedy | 28.5 Ron Studnicka   | 28 Craig Schutt    |
| 27 Tyler Mizner    | 27 Johnny Nikkila   | 26.5 Bobby Turner Jr | 26 Austin Longmore |
| 26 Kevin Wise      | 26 Jake Peden       | 25.5 Tom Richmond    | 25.5 Leroy Hoss    |

Individual High Averages

|                        |                         |                        |                          |
|------------------------|-------------------------|------------------------|--------------------------|
| 214.10 Jeremy Dalland  | 211.20 Justin SwaneK    | 211.11 Ryan Walton     | 209.31 Jared Samuelson   |
| 205.67 Jarod Zikmund   | 202.04 Carter Hollis    | 201.90 Brad Olson      | 200.39 Dan Schmidt       |
| 198.28 Masato Sugita   | 197.88 Kurt Schmidt     | 197.33 Chuck Brisbin   | 195.73 Tom Richmond      |
| 194.77 Scott Bauer     | 193.83 Josh Krolikowski | 191.61 Austin Longmore | 190.80 Michael Marcellus |
| 188.61 Brandon Conyers | 188.12 Tyler Mizner     | 187.95 Logan Albright  | 187.31 Mike Brown        |

**Most Improved Average**

---

|     |    |        |   |        |                 |     |    |        |   |       |                 |
|-----|----|--------|---|--------|-----------------|-----|----|--------|---|-------|-----------------|
| 163 | to | 174.41 | = | +11.41 | Bobby Turner Jr | 180 | to | 188.61 | = | +8.61 | Brandon Conyers |
| 192 | to | 200.39 | = | +8.39  | Dan Schmidt     | 176 | to | 183.87 | = | +7.87 | David Hibberd   |
| 190 | to | 197.33 | = | +7.33  | Chuck Brisbin   | 185 | to | 191.61 | = | +6.61 | Austin Longmore |
| 142 | to | 148.17 | = | +6.17  | Bill Kirkland   | 111 | to | 117.12 | = | +6.12 | Kodie Kershner  |
| 205 | to | 211.11 | = | +6.11  | Ryan Walton     | 152 | to | 157.18 | = | +5.18 | Ivan Stones     |

**Most Un-Improved Averages**

---

|     |    |        |   |       |                   |     |    |        |   |       |                  |
|-----|----|--------|---|-------|-------------------|-----|----|--------|---|-------|------------------|
| 202 | to | 193.83 | = | -8.17 | Josh Krolikowski  | 151 | to | 144.38 | = | -6.62 | Quentin Holliday |
| 219 | to | 214.10 | = | -4.90 | Jeremy Dalland    | 171 | to | 166.94 | = | -4.06 | Cruz Evans       |
| 180 | to | 176.08 | = | -3.92 | Lane Riffey       | 180 | to | 176.21 | = | -3.79 | Shawn Mizner     |
| 187 | to | 183.44 | = | -3.56 | Anthony Eigenberg | 185 | to | 182.44 | = | -2.56 | Kevin Wise       |
| 188 | to | 185.67 | = | -2.33 | Jeff Fruhling     | 175 | to | 172.79 | = | -2.21 | Jake Peden       |

# Classic 2025-26

## Big Apple Fun Center

### Reprint of Scores -- Week 13

#### Lane 1 1 - Draw Team - {Common Cents Bookkeeping}

| Name                 | Old   |      | HDCP |      |      |       |       |
|----------------------|-------|------|------|------|------|-------|-------|
|                      | Avg   | HDCP | -1-  | -2-  | -3-  | Total | Total |
| Ethan M. Mizner      | bk152 | 63   | 168  | 150  | 149  | 467   | 656   |
| Justin M. Hodges     | bk166 | 49   | 183  | 151  | 202  | 536   | 683   |
| Anthony C. Eigenberg | bk183 | 32   | 189  | 168  | 179  | 536   | 632   |
| Tyler L. Mizner      | bk190 | 25   | 141  | 167  | 185  | 493   | 568   |
| Austin M. Longmore   | bk193 | 22   | 170  | 182  | 161  | 513   | 579   |
|                      |       |      | ==== | ==== | ==== | ====  | ====  |
| Scratch Total        |       |      | 851  | 818  | 876  | 2545  | 2545  |
| Handicap             |       |      | 191  | 191  | 191  |       | 573   |
| Total                |       |      | 1042 | 1009 | 1067 | 2545  | 3118  |
| Team Points Won      |       |      | 5.0  | 5.0  | 0.0  | 10.0  | 10.0  |
| Match Points Won     |       |      | 3.0  | 2.0  | 2.0  | 9.0   | 9.0   |
| Total Points Won     |       |      | 8.0  | 7.0  | 2.0  | 19.0  | 19.0  |

#### Lane 2 2 - Cornhusker Ag/Rising Ag Week 13 12/1/2025

| Name               | Old   |      | HDCP |      |      |       |       |
|--------------------|-------|------|------|------|------|-------|-------|
|                    | Avg   | HDCP | -1-  | -2-  | -3-  | Total | Total |
| Doug Samuelson     | bk141 | 74   | 136  | 125  | 115  | 376   | 598   |
| Danny Jeffryes     | bk165 | 50   | 156  | 155  | 178  | 489   | 639   |
| Hewitt P. Moyer    | bk183 | 32   | 182  | 173  | 182  | 537   | 633   |
| Carter R. Hollis   | bk202 | 13   | 160  | 189  | 249  | 598   | 637   |
| Jared J. Samuelson | bk209 | 6    | 224  | 189  | 208  | 621   | 639   |
|                    |       |      | ==== | ==== | ==== | ====  | ====  |
| Scratch Total      |       |      | 858  | 831  | 932  | 2621  | 2621  |
| Handicap           |       |      | 175  | 175  | 175  |       | 525   |
| Total              |       |      | 1033 | 1006 | 1107 | 2621  | 3146  |
| Team Points Won    |       |      | 0.0  | 0.0  | 5.0  | 10.0  | 10.0  |
| Match Points Won   |       |      | 2.0  | 3.0  | 3.0  | 11.0  | 11.0  |
| Total Points Won   |       |      | 2.0  | 3.0  | 8.0  | 21.0  | 21.0  |

#### Lane 3 6 - Crash Test Brisbins Week 13 12/1/2025

| Name              | Old   |      | HDCP |      |      |       |       |
|-------------------|-------|------|------|------|------|-------|-------|
|                   | Avg   | HDCP | -1-  | -2-  | -3-  | Total | Total |
| Tom Richmond      | bk194 | 21   | 224  | 232  | 170  | 626   | 689   |
| Jason D. Stubbs   | bk179 | 36   | 182  | 169  | 224  | 575   | 683   |
| Chuck M. Brisbin  | bk196 | 19   | 187  | 225  | 223  | 635   | 692   |
| Jeremy D. Sklenar | bk208 | 7    | 230  | 188  | 225  | 643   | 664   |
| Ryan E. Walton    | bk209 | 6    | 212  | 248  | 217  | 677   | 695   |
|                   |       |      | ==== | ==== | ==== | ====  | ====  |
| Scratch Total     |       |      | 1035 | 1062 | 1059 | 3156  | 3156  |
| Handicap          |       |      | 89   | 89   | 89   |       | 267   |
| Total             |       |      | 1124 | 1151 | 1148 | 3156  | 3423  |
| Team Points Won   |       |      | 0.0  | 0.0  | 5.0  | 5.0   | 5.0   |
| Match Points Won  |       |      | 2.0  | 2.0  | 3.0  | 8.0   | 8.0   |
| Total Points Won  |       |      | 2.0  | 2.0  | 8.0  | 13.0  | 13.0  |

#### Lane 4 5 - West Week 13 12/1/2025

| Name              | Old   |      | HDCP |      |      |       |       |
|-------------------|-------|------|------|------|------|-------|-------|
|                   | Avg   | HDCP | -1-  | -2-  | -3-  | Total | Total |
| Bob Stevens       | bk152 | 63   | 173  | 180  | 193  | 546   | 735   |
| Johnny L. Nikkila | bk164 | 51   | 204  | 166  | 140  | 510   | 663   |
| Ivan D. Stones    | bk154 | 61   | 203  | 172  | 167  | 542   | 725   |
| Gary D. Hatcher   | bk164 | 51   | 136  | 174  | 202  | 512   | 665   |
| Justin R. Swanek  | bk207 | 8    | 257  | 279  | 191  | 727   | 751   |
|                   |       |      | ==== | ==== | ==== | ====  | ====  |
| Scratch Total     |       |      | 973  | 971  | 893  | 2837  | 2837  |
| Handicap          |       |      | 234  | 234  | 234  |       | 702   |
| Total             |       |      | 1207 | 1205 | 1127 | 2837  | 3539  |
| Team Points Won   |       |      | 5.0  | 5.0  | 0.0  | 15.0  | 15.0  |
| Match Points Won  |       |      | 3.0  | 3.0  | 2.0  | 12.0  | 12.0  |
| Total Points Won  |       |      | 8.0  | 8.0  | 2.0  | 27.0  | 27.0  |

#### Lane 5 12 - Peerless Machine Week 13 12/1/2025

| Name             | Old   |      | HDCP |      |      |       |       |
|------------------|-------|------|------|------|------|-------|-------|
|                  | Avg   | HDCP | -1-  | -2-  | -3-  | Total | Total |
| John W. Paul     | bk122 | 93   | 147  | 129  | 121  | 397   | 676   |
| Brooks D. Paul   | bk134 | 81   | 118  | 153  | 115  | 386   | 629   |
| Carter S. Krause | 135   | 80   | 168  | 145  | 116  | 429   | 669   |
| Alex J. Peden    | bk168 | 47   | 178  | 148  | 150  | 476   | 617   |
| Jake Peden       | bk173 | 42   | 157  | 183  | 137  | 477   | 603   |
|                  |       |      | ==== | ==== | ==== | ====  | ====  |
| Scratch Total    |       |      | 768  | 758  | 639  | 2165  | 2165  |
| Handicap         |       |      | 343  | 343  | 343  |       | 1029  |
| Total            |       |      | 1111 | 1101 | 982  | 2165  | 3194  |
| Team Points Won  |       |      | 0.0  | 0.0  | 0.0  | 0.0   | 0.0   |
| Match Points Won |       |      | 2.0  | 0.0  | 0.0  | 2.0   | 2.0   |
| Total Points Won |       |      | 2.0  | 0.0  | 0.0  | 2.0   | 2.0   |

#### Lane 6 11 - Kirkland Siding Week 13 12/1/2025

| Name             | Old   |      | HDCP |      |      |       |       |
|------------------|-------|------|------|------|------|-------|-------|
|                  | Avg   | HDCP | -1-  | -2-  | -3-  | Total | Total |
| Bill Kirkland    | bk145 | 70   | 169  | 189  | 162  | 520   | 730   |
| Bobby Turner Jr  | bk172 | 43   | 182  | 197  | 215  | 594   | 723   |
| Lane E. Riffey   | bk173 | 42   | 160  | 204  | 243  | 607   | 733   |
| Keith J. Smith   | bk178 | 37   | 212  | 197  | 168  | 577   | 688   |
| Brad M. Olson    | bk201 | 14   | 225  | 214  | 167  | 606   | 648   |
|                  |       |      | ==== | ==== | ==== | ====  | ====  |
| Scratch Total    |       |      | 948  | 1001 | 955  | 2904  | 2904  |
| Handicap         |       |      | 206  | 206  | 206  |       | 618   |
| Total            |       |      | 1154 | 1207 | 1161 | 2904  | 3522  |
| Team Points Won  |       |      | 5.0  | 5.0  | 5.0  | 20.0  | 20.0  |
| Match Points Won |       |      | 3.0  | 5.0  | 5.0  | 18.0  | 18.0  |
| Total Points Won |       |      | 8.0  | 10.0 | 10.0 | 38.0  | 38.0  |

**Lane 7 4 - AB Service & Repair** Week 13 12/1/2025

| Name             | Old Avg | Old HDCP | -1-         | -2-         | -3-        | Total       | HDCP Total  |
|------------------|---------|----------|-------------|-------------|------------|-------------|-------------|
| Mike Brown       | bk186   | 29       | 200         | <b>234</b>  | 166        | 600         | <b>687</b>  |
| Sean A. McBride  | bk136   | 79       | <b>162</b>  | <b>130</b>  | 102        | 394         | 631         |
| Greg A. Pettit   | bk203   | 12       | 204         | <b>244</b>  | 172        | 620         | <b>656</b>  |
| Kurt L. Schmidt  | bk197   | 18       | <b>201</b>  | <b>203</b>  | <b>207</b> | 611         | <b>665</b>  |
| Dan Schmidt      | bk198   | 17       | <b>219</b>  | <b>227</b>  | <b>223</b> | 669         | <b>720</b>  |
|                  |         |          | ====        | ====        | ====       | ====        | ====        |
| Scratch Total    |         |          | <b>986</b>  | <b>1038</b> | 870        | <b>2894</b> | <b>2894</b> |
| Handicap         |         |          | 155         | 155         | 155        |             | 465         |
| Total            |         |          | <b>1141</b> | <b>1193</b> | 1025       | <b>2894</b> | <b>3359</b> |
| Team Points Won  |         |          | 5.0         | 5.0         | 0.0        | 15.0        | 15.0        |
| Match Points Won |         |          | 3.0         | 5.0         | 2.0        | 14.0        | 14.0        |
| Total Points Won |         |          | 8.0         | 10.0        | 2.0        | 29.0        | 29.0        |

**Lane 8 3 - Common Cents Bookkeeping** Week 13 12/1/2025

| Name                 | Old Avg | Old HDCP | -1-        | -2-  | -3-         | Total | HDCP Total |
|----------------------|---------|----------|------------|------|-------------|-------|------------|
| Ethan M. Mizner      | bk152   | 63       | <b>168</b> | 150  | <b>149</b>  | 467   | 656        |
| Justin M. Hodges     | bk166   | 49       | 183        | 151  | <b>202</b>  | 536   | <b>683</b> |
| Anthony C. Eigenberg | bk183   | 32       | <b>189</b> | 168  | <b>179</b>  | 536   | 632        |
| Tyler L. Mizner      | bk190   | 25       | 141        | 167  | 185         | 493   | 568        |
| Austin M. Longmore   | bk193   | 22       | 170        | 182  | 161         | 513   | 579        |
|                      |         |          | ====       | ==== | ====        | ====  | ====       |
| Scratch Total        |         |          | 851        | 818  | <b>876</b>  | 2545  | 2545       |
| Handicap             |         |          | 191        | 191  | 191         |       | 573        |
| Total                |         |          | 1042       | 1009 | <b>1067</b> | 2545  | 3118       |
| Team Points Won      |         |          | 0.0        | 0.0  | 5.0         | 5.0   | 5.0        |
| Match Points Won     |         |          | 2.0        | 0.0  | 3.0         | 6.0   | 6.0        |
| Total Points Won     |         |          | 2.0        | 0.0  | 8.0         | 11.0  | 11.0       |

**Lane 9 8 - Sorensen Group** Week 13 12/1/2025

| Name                | Old Avg | Old HDCP | -1-        | -2-         | -3-        | Total       | HDCP Total  |
|---------------------|---------|----------|------------|-------------|------------|-------------|-------------|
| Logan J. Albright   | bk186   | 29       | <b>194</b> | <b>244</b>  | <b>160</b> | 598         | <b>685</b>  |
| Jeff A. Fruhling    | bk187   | 28       | 174        | 162         | <b>181</b> | 517         | 601         |
| Jerred J. Johnson   | bk207   | 8        | <b>268</b> | <b>237</b>  | 198        | 703         | 727         |
| Josh K. Krolikowski | bk195   | 20       | 145        | 190         | 195        | 530         | 590         |
| Jeremy J. Dalland   | bk215   | 0        | 182        | 204         | 212        | 598         | 598         |
|                     |         |          | ====       | ====        | ====       | ====        | ====        |
| Scratch Total       |         |          | <b>963</b> | <b>1037</b> | <b>946</b> | <b>2946</b> | <b>2946</b> |
| Handicap            |         |          | 85         | 85          | 85         |             | 255         |
| Total               |         |          | 1048       | 1122        | 1031       | <b>2946</b> | 3201        |
| Team Points Won     |         |          | 0.0        | 0.0         | 0.0        | 0.0         | 0.0         |
| Match Points Won    |         |          | 2.0        | 2.0         | 2.0        | 7.0         | 7.0         |
| Total Points Won    |         |          | 2.0        | 2.0         | 2.0        | 7.0         | 7.0         |

**Lane 10 7 - Kennedy Arborcare** Week 13 12/1/2025

| Name               | Old Avg | Old HDCP | -1-         | -2-         | -3-         | Total | HDCP Total  |
|--------------------|---------|----------|-------------|-------------|-------------|-------|-------------|
| Matthew J. Doerr   | bk145   | 70       | 131         | 138         | 97          | 366   | 576         |
| Mike McCollough    | bk150   | 65       | <b>168</b>  | <b>214</b>  | 122         | 504   | <b>699</b>  |
| Brandon M. Conyers | bk185   | 30       | 220         | 200         | <b>235</b>  | 655   | <b>745</b>  |
| Kevin L. Wise      | bk181   | 34       | <b>188</b>  | <b>179</b>  | <b>200</b>  | 567   | <b>669</b>  |
| Masato M. Sugita   | bk197   | 18       | <b>192</b>  | <b>196</b>  | <b>243</b>  | 631   | <b>685</b>  |
|                    |         |          | ====        | ====        | ====        | ====  | ====        |
| Scratch Total      |         |          | 899         | 927         | 897         | 2723  | 2723        |
| Handicap           |         |          | 217         | 217         | 217         |       | 651         |
| Total              |         |          | <b>1116</b> | <b>1144</b> | <b>1114</b> | 2723  | <b>3374</b> |
| Team Points Won    |         |          | 5.0         | 5.0         | 5.0         | 20.0  | 20.0        |
| Match Points Won   |         |          | 3.0         | 3.0         | 3.0         | 13.0  | 13.0        |
| Total Points Won   |         |          | 8.0         | 8.0         | 8.0         | 33.0  | 33.0        |

**Lane 11 10 - Jack Lederman Co.** Week 13 12/1/2025

| Name              | Old Avg | Old HDCP | -1-         | -2-        | -3-        | Total       | HDCP Total  |
|-------------------|---------|----------|-------------|------------|------------|-------------|-------------|
| Ron J. Studnicka  | bk150   | 65       | 176         | <b>167</b> | <b>158</b> | 501         | <b>696</b>  |
| Trevor D. Hibberd | bk172   | 43       | <b>195</b>  | 169        | 169        | 533         | <b>662</b>  |
| Leroy H. Hoss     | bk135   | 80       | <b>138</b>  | <b>170</b> | 150        | 458         | <b>698</b>  |
| David D. Hibberd  | bk184   | 31       | <b>201</b>  | 139        | <b>196</b> | 536         | 629         |
| Jarod D. Zikmund  | bk206   | 9        | 182         | 180        | <b>217</b> | 579         | 606         |
|                   |         |          | ====        | ====       | ====       | ====        | ====        |
| Scratch Total     |         |          | <b>892</b>  | <b>825</b> | <b>890</b> | <b>2607</b> | <b>2607</b> |
| Handicap          |         |          | 228         | 228        | 228        |             | 684         |
| Total             |         |          | <b>1120</b> | 1053       | 1118       | <b>2607</b> | 3291        |
| Team Points Won   |         |          | 5.0         | 0.0        | 0.0        | 5.0         | 5.0         |
| Match Points Won  |         |          | 3.0         | 2.0        | 3.0        | 11.0        | 11.0        |
| Total Points Won  |         |          | 8.0         | 2.0        | 3.0        | 16.0        | 16.0        |

**Lane 12 9 - Little Mexico Restaurant** Week 13 12/1/2025

| Name                | Old Avg | Old HDCP | -1-        | -2-         | -3-         | Total | HDCP Total  |
|---------------------|---------|----------|------------|-------------|-------------|-------|-------------|
| Nolan P. Parr       | bk141   | 74       | <b>184</b> | 138         | 140         | 462   | 684         |
| Cruz A. Evans       | bk167   | 48       | 120        | <b>191</b>  | <b>187</b>  | 498   | 642         |
| Quentin S. Holliday | bk144   | 71       | 104        | 149         | <b>170</b>  | 423   | 636         |
| JD Einspahr         | bk126   | 89       | 141        | <b>143</b>  | 126         | 410   | <b>677</b>  |
| Craig A. Schutt     | bk151   | 64       | <b>142</b> | <b>177</b>  | 156         | 475   | <b>667</b>  |
|                     |         |          | ====       | ====        | ====        | ====  | ====        |
| Scratch Total       |         |          | 691        | 798         | 779         | 2268  | 2268        |
| Handicap            |         |          | 346        | 346         | 346         |       | 1038        |
| Total               |         |          | 1037       | <b>1144</b> | <b>1125</b> | 2268  | <b>3306</b> |
| Team Points Won     |         |          | 0.0        | 5.0         | 5.0         | 15.0  | 15.0        |
| Match Points Won    |         |          | 2.0        | 3.0         | 2.0         | 9.0   | 9.0         |
| Total Points Won    |         |          | 2.0        | 8.0         | 7.0         | 24.0  | 24.0        |

# Classic 2025-26

## Big Apple Fun Center

Note: This report includes information through December 1 which is Week 13 of 32

### Match Points Won (This Week) -- Week 13

#### Lane 1 1 - Draw Team - {Common Cents Bookkeeping}

| Name                 | Last Wk Won | Last Wk Lost | HDCP -1- | HDCP -2- | HDCP -3- | HDCP Total |
|----------------------|-------------|--------------|----------|----------|----------|------------|
| Ethan M. Mizner      |             |              | 231      | 213      | 212      | 656        |
| Justin M. Hodges     |             |              | 232      | 200      | 251      | 683        |
| Anthony C. Eigenberg |             |              | 221      | 200      | 211      | 632        |
| Tyler L. Mizner      |             |              | 166      | 192      | 210      | 568        |
| Austin M. Longmore   |             |              | 192      | 204      | 183      | 579        |
| =====                |             |              |          |          |          |            |
| Scratch Total        |             |              | 851      | 818      | 876      | 2545       |
| Handicap             |             |              | 191      | 191      | 191      | 573        |
| Total                |             |              | 1042     | 1009     | 1067     | 3118       |
| Team Points Won      |             |              | 5.0      | 5.0      | 0.0      | 10.0       |
| Match Points Won     |             |              | 3.0      | 2.0      | 2.0      | 9.0        |
| Total Points Won     |             |              | 8.0      | 7.0      | 2.0      | 19.0       |

#### Lane 3 6 - Crash Test Brisbins Week 13 12/1/2025

| Name              | Last Wk Won | Last Wk Lost | HDCP -1- | HDCP -2- | HDCP -3- | HDCP Total |
|-------------------|-------------|--------------|----------|----------|----------|------------|
| Tom Richmond      | 2.0         | 2.0          | 245      | 253      | 191      | 689        |
| Jason D. Stubbs   | 2.0         | 2.0          | 218      | 205      | 260      | 683        |
| Chuck M. Brisbin  | 2.0         | 2.0          | 206      | 244      | 242      | 692        |
| Jeremy D. Sklenar | 1.0         | 3.0          | 237      | 195      | 232      | 664        |
| Ryan E. Walton    | 1.0         | 3.0          | 218      | 254      | 223      | 695        |
| =====             |             |              |          |          |          |            |
| Scratch Total     |             |              | 1035     | 1062     | 1059     | 3156       |
| Handicap          |             |              | 89       | 89       | 89       | 267        |
| Total             |             |              | 1124     | 1151     | 1148     | 3423       |
| Team Points Won   |             |              | 0.0      | 0.0      | 5.0      | 5.0        |
| Match Points Won  |             |              | 2.0      | 2.0      | 3.0      | 8.0        |
| Total Points Won  |             |              | 2.0      | 2.0      | 8.0      | 13.0       |

#### Lane 5 12 - Peerless Machine Week 13 12/1/2025

| Name             | Last Wk Won | Last Wk Lost | HDCP -1- | HDCP -2- | HDCP -3- | HDCP Total |
|------------------|-------------|--------------|----------|----------|----------|------------|
| John W. Paul     | 1.0         | 3.0          | 240      | 222      | 214      | 676        |
| Brooks D. Paul   |             | 4.0          | 199      | 234      | 196      | 629        |
| Carter S. Krause | 1.0         | 3.0          | 248      | 225      | 196      | 669        |
| Alex J. Peden    |             | 4.0          | 225      | 195      | 197      | 617        |
| Jake Peden       |             | 4.0          | 199      | 225      | 179      | 603        |
| =====            |             |              |          |          |          |            |
| Scratch Total    |             |              | 768      | 758      | 639      | 2165       |
| Handicap         |             |              | 343      | 343      | 343      | 1029       |
| Total            |             |              | 1111     | 1101     | 982      | 3194       |
| Team Points Won  |             |              | 0.0      | 0.0      | 0.0      | 0.0        |
| Match Points Won |             |              | 2.0      | 0.0      | 0.0      | 2.0        |
| Total Points Won |             |              | 2.0      | 0.0      | 0.0      | 2.0        |

#### Lane 2 2 - Cornhusker Ag/Rising Ag Week 13 12/1/2025

| Name               | Last Wk Won | Last Wk Lost | HDCP -1- | HDCP -2- | HDCP -3- | HDCP Total |
|--------------------|-------------|--------------|----------|----------|----------|------------|
| Doug Samuelson     |             | 4.0          | 210      | 199      | 189      | 598        |
| Danny Jeffryes     | 1.0         | 3.0          | 206      | 205      | 228      | 639        |
| Hewitt P. Moyer    | 3.0         | 1.0          | 214      | 205      | 214      | 633        |
| Carter R. Hollis   | 4.0         |              | 173      | 202      | 262      | 637        |
| Jared J. Samuelson | 3.0         | 1.0          | 230      | 195      | 214      | 639        |
| =====              |             |              |          |          |          |            |
| Scratch Total      |             |              | 858      | 831      | 932      | 2621       |
| Handicap           |             |              | 175      | 175      | 175      | 525        |
| Total              |             |              | 1033     | 1006     | 1107     | 3146       |
| Team Points Won    |             |              | 0.0      | 0.0      | 5.0      | 10.0       |
| Match Points Won   |             |              | 2.0      | 3.0      | 3.0      | 11.0       |
| Total Points Won   |             |              | 2.0      | 3.0      | 8.0      | 21.0       |

#### Lane 4 5 - West Week 13 12/1/2025

| Name              | Last Wk Won | Last Wk Lost | HDCP -1- | HDCP -2- | HDCP -3- | HDCP Total |
|-------------------|-------------|--------------|----------|----------|----------|------------|
| Bob Stevens       | 2.0         | 2.0          | 236      | 243      | 256      | 735        |
| Johnny L. Nikkila | 2.0         | 2.0          | 255      | 217      | 191      | 663        |
| Ivan D. Stones    | 2.0         | 2.0          | 264      | 233      | 228      | 725        |
| Gary D. Hatcher   | 3.0         | 1.0          | 187      | 225      | 253      | 665        |
| Justin R. Swanek  | 3.0         | 1.0          | 265      | 287      | 199      | 751        |
| =====             |             |              |          |          |          |            |
| Scratch Total     |             |              | 973      | 971      | 893      | 2837       |
| Handicap          |             |              | 234      | 234      | 234      | 702        |
| Total             |             |              | 1207     | 1205     | 1127     | 3539       |
| Team Points Won   |             |              | 5.0      | 5.0      | 0.0      | 15.0       |
| Match Points Won  |             |              | 3.0      | 3.0      | 2.0      | 12.0       |
| Total Points Won  |             |              | 8.0      | 8.0      | 2.0      | 27.0       |

#### Lane 6 11 - Kirkland Siding Week 13 12/1/2025

| Name             | Last Wk Won | Last Wk Lost | HDCP -1- | HDCP -2- | HDCP -3- | HDCP Total |
|------------------|-------------|--------------|----------|----------|----------|------------|
| Bill Kirkland    | 3.0         | 1.0          | 239      | 259      | 232      | 730        |
| Bobby Turner Jr  | 4.0         |              | 225      | 240      | 258      | 723        |
| Lane E. Riffey   | 3.0         | 1.0          | 202      | 246      | 285      | 733        |
| Keith J. Smith   | 4.0         |              | 249      | 234      | 205      | 688        |
| Brad M. Olson    | 4.0         |              | 239      | 228      | 181      | 648        |
| =====            |             |              |          |          |          |            |
| Scratch Total    |             |              | 948      | 1001     | 955      | 2904       |
| Handicap         |             |              | 206      | 206      | 206      | 618        |
| Total            |             |              | 1154     | 1207     | 1161     | 3522       |
| Team Points Won  |             |              | 5.0      | 5.0      | 5.0      | 20.0       |
| Match Points Won |             |              | 3.0      | 5.0      | 5.0      | 18.0       |
| Total Points Won |             |              | 8.0      | 10.0     | 10.0     | 38.0       |

Note: This report includes information through December 1 which is Week 13 of 32

**Lane 7 4 - AB Service & Repair** Week 13 12/1/2025

| Name             | Last Wk Won | Last Wk Lost | HDCP -1- | HDCP -2- | HDCP -3- | HDCP Total |
|------------------|-------------|--------------|----------|----------|----------|------------|
| Mike Brown       | 2.0         | 2.0          | 229      | 263      | 195      | 687        |
| Sean A. McBride  | 2.0         | 2.0          | 241      | 209      | 181      | 631        |
| Greg A. Pettit   | 2.0         | 2.0          | 216      | 256      | 184      | 656        |
| Kurt L. Schmidt  | 4.0         |              | 219      | 221      | 225      | 665        |
| Dan Schmidt      | 4.0         |              | 236      | 244      | 240      | 720        |
| =====            |             |              |          |          |          |            |
| Scratch Total    |             |              | 986      | 1038     | 870      | 2894       |
| Handicap         |             |              | 155      | 155      | 155      | 465        |
| Total            |             |              | 1141     | 1193     | 1025     | 3359       |
| Team Points Won  |             |              | 5.0      | 5.0      | 0.0      | 15.0       |
| Match Points Won |             |              | 3.0      | 5.0      | 2.0      | 14.0       |
| Total Points Won |             |              | 8.0      | 10.0     | 2.0      | 29.0       |

**Lane 9 8 - Sorensen Group** Week 13 12/1/2025

| Name                | Last Wk Won | Last Wk Lost | HDCP -1- | HDCP -2- | HDCP -3- | HDCP Total |
|---------------------|-------------|--------------|----------|----------|----------|------------|
| Logan J. Albright   | 4.0         |              | 223      | 273      | 189      | 685        |
| Jeff A. Fruhling    | 1.0         | 3.0          | 202      | 190      | 209      | 601        |
| Jerred J. Johnson   | 2.0         | 2.0          | 276      | 245      | 206      | 727        |
| Josh K. Krolikowski |             | 4.0          | 165      | 210      | 215      | 590        |
| Jeremy J. Dalland   |             | 4.0          | 182      | 204      | 212      | 598        |
| =====               |             |              |          |          |          |            |
| Scratch Total       |             |              | 963      | 1037     | 946      | 2946       |
| Handicap            |             |              | 85       | 85       | 85       | 255        |
| Total               |             |              | 1048     | 1122     | 1031     | 3201       |
| Team Points Won     |             |              | 0.0      | 0.0      | 0.0      | 0.0        |
| Match Points Won    |             |              | 2.0      | 2.0      | 2.0      | 7.0        |
| Total Points Won    |             |              | 2.0      | 2.0      | 2.0      | 7.0        |

**Lane 11 10 - Jack Lederman Co.** Week 13 12/1/2025

| Name              | Last Wk Won | Last Wk Lost | HDCP -1- | HDCP -2- | HDCP -3- | HDCP Total |
|-------------------|-------------|--------------|----------|----------|----------|------------|
| Ron J. Studnicka  | 3.0         | 1.0          | 241      | 232      | 223      | 696        |
| Trevor D. Hibberd | 2.0         | 2.0          | 238      | 212      | 212      | 662        |
| Leroy H. Hoss     | 3.0         | 1.0          | 218      | 250      | 230      | 698        |
| David D. Hibberd  | 2.0         | 2.0          | 232      | 170      | 227      | 629        |
| Jarod D. Zikmund  | 1.0         | 3.0          | 191      | 189      | 226      | 606        |
| =====             |             |              |          |          |          |            |
| Scratch Total     |             |              | 892      | 825      | 890      | 2607       |
| Handicap          |             |              | 228      | 228      | 228      | 684        |
| Total             |             |              | 1120     | 1053     | 1118     | 3291       |
| Team Points Won   |             |              | 5.0      | 0.0      | 0.0      | 5.0        |
| Match Points Won  |             |              | 3.0      | 2.0      | 3.0      | 11.0       |
| Total Points Won  |             |              | 8.0      | 2.0      | 3.0      | 16.0       |

**Lane 8 3 - Common Cents Bookkeeping** Week 13 12/1/2025

| Name                 | Last Wk Won | Last Wk Lost | HDCP -1- | HDCP -2- | HDCP -3- | HDCP Total |
|----------------------|-------------|--------------|----------|----------|----------|------------|
| Ethan M. Mizner      | 2.0         | 2.0          | 231      | 213      | 212      | 656        |
| Justin M. Hodges     | 2.0         | 2.0          | 232      | 200      | 251      | 683        |
| Anthony C. Eigenberg | 2.0         | 2.0          | 221      | 200      | 211      | 632        |
| Tyler L. Mizner      |             | 4.0          | 166      | 192      | 210      | 568        |
| Austin M. Longmore   |             | 4.0          | 192      | 204      | 183      | 579        |
| =====                |             |              |          |          |          |            |
| Scratch Total        |             |              | 851      | 818      | 876      | 2545       |
| Handicap             |             |              | 191      | 191      | 191      | 573        |
| Total                |             |              | 1042     | 1009     | 1067     | 3118       |
| Team Points Won      |             |              | 0.0      | 0.0      | 5.0      | 5.0        |
| Match Points Won     |             |              | 2.0      | 0.0      | 3.0      | 6.0        |
| Total Points Won     |             |              | 2.0      | 0.0      | 8.0      | 11.0       |

**Lane 10 7 - Kennedy Arborcare** Week 13 12/1/2025

| Name               | Last Wk Won | Last Wk Lost | HDCP -1- | HDCP -2- | HDCP -3- | HDCP Total |
|--------------------|-------------|--------------|----------|----------|----------|------------|
| Matthew J. Doerr   |             | 4.0          | 201      | 208      | 167      | 576        |
| Mike McCollough    | 3.0         | 1.0          | 233      | 279      | 187      | 699        |
| Brandon M. Conyers | 2.0         | 2.0          | 250      | 230      | 265      | 745        |
| Kevin L. Wise      | 4.0         |              | 222      | 213      | 234      | 669        |
| Masato M. Sugita   | 4.0         |              | 210      | 214      | 261      | 685        |
| =====              |             |              |          |          |          |            |
| Scratch Total      |             |              | 899      | 927      | 897      | 2723       |
| Handicap           |             |              | 217      | 217      | 217      | 651        |
| Total              |             |              | 1116     | 1144     | 1114     | 3374       |
| Team Points Won    |             |              | 5.0      | 5.0      | 5.0      | 20.0       |
| Match Points Won   |             |              | 3.0      | 3.0      | 3.0      | 13.0       |
| Total Points Won   |             |              | 8.0      | 8.0      | 8.0      | 33.0       |

**Lane 12 9 - Little Mexico Restaurant** Week 13 12/1/2025

| Name                | Last Wk Won | Last Wk Lost | HDCP -1- | HDCP -2- | HDCP -3- | HDCP Total |
|---------------------|-------------|--------------|----------|----------|----------|------------|
| Nolan P. Parr       | 1.0         | 3.0          | 258      | 212      | 214      | 684        |
| Cruz A. Evans       | 2.0         | 2.0          | 168      | 239      | 235      | 642        |
| Quentin S. Holliday | 1.0         | 3.0          | 175      | 220      | 241      | 636        |
| JD Einspahr         | 2.0         | 2.0          | 230      | 232      | 215      | 677        |
| Craig A. Schutt     | 3.0         | 1.0          | 206      | 241      | 220      | 667        |
| =====               |             |              |          |          |          |            |
| Scratch Total       |             |              | 691      | 798      | 779      | 2268       |
| Handicap            |             |              | 346      | 346      | 346      | 1038       |
| Total               |             |              | 1037     | 1144     | 1125     | 3306       |
| Team Points Won     |             |              | 0.0      | 5.0      | 5.0      | 15.0       |
| Match Points Won    |             |              | 2.0      | 3.0      | 2.0      | 9.0        |
| Total Points Won    |             |              | 2.0      | 8.0      | 7.0      | 24.0       |

# Classic 2025-26

## Big Apple Fun Center

\* Bowlers listed must have a minimum of 1 games.

### Match Points Won (Total for Year)

| Name                | Points |      | %Won   | Avg | Gms | Name                 | Points |      | %Won    | Avg   | Gms |
|---------------------|--------|------|--------|-----|-----|----------------------|--------|------|---------|-------|-----|
|                     | Won    | Lost |        |     |     |                      | Won    | Lost |         |       |     |
| David D. Hibberd    | 32.5   | 19.5 | 62.50% | 183 | 39  | Jared J. Samuelson   | 19.5   | 28.5 | 40.63%  | 209   | 36  |
| Chuck M. Brisbin    | 31.5   | 16.5 | 65.63% | 197 | 36  | Jeremy J. Dalland    | 19.0   | 25.0 | 43.18%  | 214   | 30  |
| Keith J. Smith      | 30.0   | 22.0 | 57.69% | 179 | 39  | Ivan D. Stones       | 19.0   | 25.0 | 43.18%  | 157   | 33  |
| Alex J. Peden       | 29.0   | 19.0 | 60.42% | 167 | 36  | Mike McCollough      | 19.0   | 17.0 | 52.78%  | 153   | 24  |
| Masato M. Sugita    | 29.0   | 23.0 | 55.77% | 198 | 39  | Trevor D. Hibberd    | 19.0   | 21.0 | 47.50%  | 172   | 30  |
| Andrew J. Kennedy   | 28.5   | 15.5 | 64.77% | 140 | 33  | Josh K. Krolikowski  | 18.0   | 30.0 | 37.50%  | 193   | 36  |
| Ron J. Studnicka    | 28.5   | 23.5 | 54.81% | 151 | 39  | Anthony C. Eigenberg | 18.0   | 30.0 | 37.50%  | 183   | 36  |
| Craig A. Schutt     | 28.0   | 20.0 | 58.33% | 152 | 36  | Jacob M. Rodriguez   | 17.5   | 14.5 | 54.69%  | 110   | 24  |
| Tyler L. Mizner     | 27.0   | 17.0 | 61.36% | 188 | 33  | Scott A. Bauer       | 17.0   | 23.0 | 42.50%  | 194   | 30  |
| Johnny L. Nikkila   | 27.0   | 21.0 | 56.25% | 164 | 36  | Trevor A. Roberts    | 16.5   | 11.5 | 58.93%  | 149   | 21  |
| Bobby Turner Jr     | 26.5   | 25.5 | 50.96% | 174 | 39  | Carter R. Hollis     | 15.5   | 16.5 | 48.44%  | 202   | 24  |
| Austin M. Longmore  | 26.0   | 22.0 | 54.17% | 191 | 36  | Shawn E. Mizner      | 15.0   | 29.0 | 34.09%  | 176   | 33  |
| Kevin L. Wise       | 26.0   | 22.0 | 54.17% | 182 | 36  | Javan D. Clement     | 15.0   | 9.0  | 62.50%  | 183   | 18  |
| Jake Peden          | 26.0   | 26.0 | 50.00% | 172 | 39  | Gordon E. Thiessen   | 14.0   | 10.0 | 58.33%  | 225   | 18  |
| Tom Richmond        | 25.5   | 18.5 | 57.95% | 195 | 33  | Danny Jeffryes       | 14.0   | 22.0 | 38.89%  | 165   | 27  |
| Leroy H. Hoss       | 25.5   | 26.5 | 49.04% | 137 | 39  | Ethan M. Mizner      | 14.0   | 10.0 | 58.33%  | 152   | 18  |
| Jason D. Stubbs     | 25.0   | 23.0 | 52.08% | 180 | 36  | Logan J. Albright    | 13.0   | 15.0 | 46.43%  | 187   | 21  |
| Brad M. Olson       | 25.0   | 27.0 | 48.08% | 201 | 39  | Gary D. Hatcher      | 13.0   | 19.0 | 40.63%  | 165   | 24  |
| Kurt L. Schmidt     | 24.0   | 8.0  | 75.00% | 197 | 24  | Nolan P. Parr        | 13.0   | 11.0 | 54.17%  | 143   | 18  |
| Jarod D. Zikmund    | 24.0   | 28.0 | 46.15% | 205 | 39  | Doug Samuelson       | 13.0   | 15.0 | 46.43%  | 139   | 21  |
| Hewitt P. Moyer     | 24.0   | 8.0  | 75.00% | 182 | 24  | Jerred J. Johnson    | 11.0   | 13.0 | 45.83%  | 212   | 15  |
| Carter S. Krause    | 23.5   | 24.5 | 48.96% | 135 | 36  | Michael G. Marcellus | 10.0   | 34.0 | 22.73%  | 190   | 30  |
| Cody D. Bristow     | 23.5   | 24.5 | 48.96% | 180 | 36  | Greg A. Pettit       | 9.0    | 7.0  | 56.25%  | 204   | 12  |
| Dan Schmidt         | 23.5   | 20.5 | 53.41% | 200 | 33  | John W. Paul         | 7.0    | 13.0 | 35.00%  | 124   | 15  |
| Justin R. Swanek    | 23.0   | 17.0 | 57.50% | 211 | 30  | Jeremy D. Sklenar    | 7.0    | 5.0  | 58.33%  | 214   | 9   |
| Ryan E. Walton      | 23.0   | 25.0 | 47.92% | 211 | 36  | Phillip O. White     | 6.0    | 6.0  | 50.00%  | 106   | 6   |
| Mike Brown          | 22.5   | 29.5 | 43.27% | 187 | 39  | Jerry Schmitz        | 6.0    | 2.0  | 75.00%  | bk183 | 6   |
| Brooks D. Paul      | 22.5   | 29.5 | 43.27% | 134 | 39  | Matthew J. Doerr     | 6.0    | 22.0 | 21.43%  | 142   | 21  |
| Sean A. McBride     | 22.5   | 9.5  | 70.31% | 136 | 24  | Chris P. Drew        | 6.0    | 2.0  | 75.00%  | 137   | 6   |
| Bill Kirkland       | 22.5   | 25.5 | 46.88% | 148 | 36  | Nathan Banks         | 5.0    | 11.0 | 31.25%  | 160   | 12  |
| Kodie D. Kershner   | 22.0   | 22.0 | 50.00% | 117 | 33  | Brent E. Hollis      | 5.0    | 11.0 | 31.25%  | 145   | 12  |
| Jeff A. Fruhling    | 22.0   | 18.0 | 55.00% | 185 | 30  | Tom McLeod           | 4.0    |      | 100.00% | bk192 | 3   |
| Justin M. Hodges    | 22.0   | 30.0 | 42.31% | 167 | 39  | Bruce A. Hatcher     | 4.0    | 4.0  | 50.00%  | bk209 | 6   |
| Lane E. Riffey      | 21.0   | 31.0 | 40.38% | 176 | 39  | Bob G. Vogt          | 3.0    | 1.0  | 75.00%  | bk164 | 3   |
| JD Einspahr         | 21.0   | 11.0 | 65.63% | 128 | 24  | Eric R. Zikmund      | 2.0    | 10.0 | 16.67%  | 183   | 9   |
| Quentin S. Holliday | 21.0   | 31.0 | 40.38% | 144 | 39  | Lee M. Dobish        | 1.0    | 3.0  | 25.00%  | 124   | 3   |
| Bob Stevens         | 20.5   | 31.5 | 39.42% | 155 | 39  | Kirk E. Kossman      | 1.0    | 3.0  | 25.00%  | bk169 | 3   |
| Chris R. Lytle      | 20.5   | 15.5 | 56.94% | 167 | 27  | Nathan R. Canfield   | 1.0    | 3.0  | 25.00%  | 180   | 3   |
| Brandon M. Conyers  | 20.0   | 28.0 | 41.67% | 188 | 36  | Jason S. Feddersen   | 1.0    | 3.0  | 25.00%  | bk217 | 3   |
| Cruz A. Evans       | 20.0   | 24.0 | 45.45% | 166 | 33  | Doug Houtz           |        | 4.0  | 0.00%   | bk170 | 3   |
| Doug Giles          | 19.5   | 20.5 | 48.75% | 155 | 30  |                      |        |      |         |       |     |

# Classic 2025-26

## Big Apple Fun Center

\* Bowlers listed must have a minimum of 1 games.

### Change in Average

| Name                 | -----Old----- |       | Old   |            |            |            |       | ---Average Change--- |          |          | Weekly Over Avg |
|----------------------|---------------|-------|-------|------------|------------|------------|-------|----------------------|----------|----------|-----------------|
|                      | Pins          | Games | Avg   | -1-        | -2-        | -3-        | Total | New                  | Old      | ---> +/- | Series Avg +/-  |
| Logan J. Albright    | 3349          | 18    | bk186 | <b>194</b> | <b>244</b> | <b>160</b> | 598   | 187.95               | - 186.06 | = 1.90   | 598 - 558=40    |
| Nathan Banks         | 1924          | 12    | bk160 |            |            |            | 0     | 160.33               | - 160.33 | = 0.00   |                 |
| Scott A. Bauer       | 5843          | 30    | bk194 |            |            |            | 0     | 194.77               | - 194.77 | = 0.00   |                 |
| Chuck M. Brisbin     | 6469          | 33    | bk196 | 187        | <b>225</b> | <b>223</b> | 635   | 197.33               | - 196.03 | = 1.30   | 635 - 588=47    |
| Cody D. Bristow      | 6493          | 36    | bk180 |            |            |            | 0     | 180.36               | - 180.36 | = 0.00   |                 |
| Mike Brown           | 6705          | 36    | bk186 | 200        | <b>234</b> | 166        | 600   | 187.31               | - 186.25 | = 1.06   | 600 - 558=42    |
| Nathan R. Canfield   | 541           | 3     | 180   |            |            |            | 0     | 180.33               | - 180.33 | = 0.00   |                 |
| Javan D. Clement     | 3301          | 18    | bk183 |            |            |            | 0     | 183.39               | - 183.39 | = 0.00   |                 |
| Brandon M. Conyers   | 6135          | 33    | bk185 | 220        | 200        | <b>235</b> | 655   | 188.61               | - 185.91 | = 2.70   | 655 - 555=100   |
| Jeremy J. Dalland    | 5825          | 27    | bk215 | 182        | 204        | 212        | 598   | 214.10               | - 215.74 | = -1.64  | 598 - 645=-47   |
| Lee M. Dobish        | 373           | 3     | 124   |            |            |            | 0     | 124.33               | - 124.33 | = 0.00   |                 |
| Matthew J. Doerr     | 2620          | 18    | bk145 | 131        | 138        | 97         | 366   | 142.19               | - 145.56 | = -3.37  | 366 - 435=-69   |
| Chris P. Drew        | 827           | 6     | 137   |            |            |            | 0     | 137.83               | - 137.83 | = 0.00   |                 |
| Anthony C. Eigenberg | 6068          | 33    | bk183 | <b>189</b> | 168        | <b>179</b> | 536   | 183.44               | - 183.88 | = -0.43  | 536 - 549=-13   |
| JD Einspahr          | 2666          | 21    | bk126 | 141        | <b>143</b> | 126        | 410   | 128.17               | - 126.95 | = 1.21   | 410 - 378=32    |
| Cruz A. Evans        | 5011          | 30    | bk167 | 120        | <b>191</b> | <b>187</b> | 498   | 166.94               | - 167.03 | = -0.09  | 498 - 501=-3    |
| Jason S. Feddersen   | 610           | 3     | bk217 |            |            |            | 0     | 203.33               | - 203.33 | = 0.00   |                 |
| Jeff A. Fruhling     | 5053          | 27    | bk187 | 174        | 162        | <b>181</b> | 517   | 185.67               | - 187.15 | = -1.48  | 517 - 561=-44   |
| Doug Giles           | 4667          | 30    | bk155 |            |            |            | 0     | 155.57               | - 155.57 | = 0.00   |                 |
| Bruce A. Hatcher     | 1235          | 6     | bk209 |            |            |            | 0     | 205.83               | - 205.83 | = 0.00   |                 |
| Gary D. Hatcher      | 3454          | 21    | bk164 | 136        | <b>174</b> | <b>202</b> | 512   | 165.25               | - 164.48 | = 0.77   | 512 - 492=20    |
| David D. Hibberd     | 6635          | 36    | bk184 | <b>201</b> | 139        | <b>196</b> | 536   | 183.87               | - 184.31 | = -0.43  | 536 - 552=-16   |
| Trevor D. Hibberd    | 4648          | 27    | bk172 | <b>195</b> | 169        | 169        | 533   | 172.70               | - 172.15 | = 0.55   | 533 - 516=17    |
| Justin M. Hodges     | 6003          | 36    | bk166 | 183        | 151        | <b>202</b> | 536   | 167.67               | - 166.75 | = 0.92   | 536 - 498=38    |
| Quentin S. Holliday  | 5208          | 36    | bk144 | 104        | 149        | <b>170</b> | 423   | 144.38               | - 144.67 | = -0.28  | 423 - 432=-9    |
| Brent E. Hollis      | 1747          | 12    | bk145 |            |            |            | 0     | 145.58               | - 145.58 | = 0.00   |                 |
| Carter R. Hollis     | 4251          | 21    | bk202 | <b>160</b> | <b>189</b> | <b>249</b> | 598   | 202.04               | - 202.43 | = -0.39  | 598 - 606=-8    |
| Leroy H. Hoss        | 4894          | 36    | bk135 | <b>138</b> | <b>170</b> | 150        | 458   | 137.23               | - 135.94 | = 1.29   | 458 - 405=53    |
| Doug Houtz           | 509           | 3     | bk170 |            |            |            | 0     | 169.67               | - 169.67 | = 0.00   |                 |
| Danny Jeffryes       | 3970          | 24    | bk165 | 156        | <b>155</b> | 178        | 489   | 165.15               | - 165.42 | = -0.27  | 489 - 495=-6    |
| Jerred J. Johnson    | 2489          | 12    | bk207 | <b>268</b> | <b>237</b> | 198        | 703   | 212.80               | - 207.42 | = 5.38   | 703 - 621=82    |
| Andrew J. Kennedy    | 4633          | 33    | bk140 |            |            |            | 0     | 140.39               | - 140.39 | = 0.00   |                 |
| Kodie D. Kershner    | 3865          | 33    | 117   |            |            |            | 0     | 117.12               | - 117.12 | = 0.00   |                 |
| Bill Kirkland        | 4814          | 33    | bk145 | 169        | <b>189</b> | <b>162</b> | 520   | 148.17               | - 145.88 | = 2.29   | 520 - 435=85    |
| Kirk E. Kossman      | 460           | 3     | bk169 |            |            |            | 0     | 153.33               | - 153.33 | = 0.00   |                 |
| Carter S. Krause     | 4461          | 33    | 135   | <b>168</b> | 145        | 116        | 429   | 135.83               | - 135.18 | = 0.65   | 429 - 405=24    |
| Josh K. Krolikowski  | 6448          | 33    | bk195 | 145        | 190        | 195        | 530   | 193.83               | - 195.39 | = -1.56  | 530 - 585=-55   |

Classic 2025-26

| Name                 | -----Old----- |       | Old   | ---Average Change--- |            |            |       |                         | Weekly Over Avg |
|----------------------|---------------|-------|-------|----------------------|------------|------------|-------|-------------------------|-----------------|
|                      | Pins          | Games | Avg   | -1-                  | -2-        | -3-        | Total | New - Old ---> +/-      | Series Avg +/-  |
| Austin M. Longmore   | 6385          | 33    | bk193 | 170                  | 182        | 161        | 513   | 191.61 - 193.48 = -1.87 | 513 - 579=-66   |
| Chris R. Lytle       | 4521          | 27    | bk167 |                      |            |            | 0     | 167.44 - 167.44 = 0.00  |                 |
| Michael G. Marcellus | 5724          | 30    | bk190 |                      |            |            | 0     | 190.80 - 190.80 = 0.00  |                 |
| Sean A. McBride      | 2873          | 21    | bk136 | <b>162</b>           | <b>130</b> | 102        | 394   | 136.13 - 136.81 = -0.68 | 394 - 408=-14   |
| Mike McCollough      | 3169          | 21    | bk150 | <b>168</b>           | <b>214</b> | 122        | 504   | 153.04 - 150.90 = 2.14  | 504 - 450=54    |
| Tom McLeod           | 562           | 3     | bk192 |                      |            |            | 0     | 187.33 - 187.33 = 0.00  |                 |
| Ethan M. Mizner      | 2283          | 15    | bk152 | <b>168</b>           | 150        | <b>149</b> | 467   | 152.78 - 152.20 = 0.58  | 467 - 456=11    |
| Shawn E. Mizner      | 5815          | 33    | bk176 |                      |            |            | 0     | 176.21 - 176.21 = 0.00  |                 |
| Tyler L. Mizner      | 5715          | 30    | bk190 | 141                  | 167        | 185        | 493   | 188.12 - 190.50 = -2.38 | 493 - 570=-77   |
| Hewitt P. Moyer      | 3852          | 21    | bk183 | 182                  | <b>173</b> | <b>182</b> | 537   | 182.88 - 183.43 = -0.55 | 537 - 549=-12   |
| Johnny L. Nikkila    | 5427          | 33    | bk164 | <b>204</b>           | <b>166</b> | 140        | 510   | 164.92 - 164.45 = 0.46  | 510 - 492=18    |
| Brad M. Olson        | 7268          | 36    | bk201 | <b>225</b>           | <b>214</b> | <b>167</b> | 606   | 201.90 - 201.89 = 0.01  | 606 - 603=3     |
| Nolan P. Parr        | 2118          | 15    | bk141 | <b>184</b>           | 138        | 140        | 462   | 143.33 - 141.20 = 2.13  | 462 - 423=39    |
| Brooks D. Paul       | 4854          | 36    | bk134 | 118                  | 153        | 115        | 386   | 134.36 - 134.83 = -0.47 | 386 - 402=-16   |
| John W. Paul         | 1474          | 12    | bk122 | <b>147</b>           | 129        | 121        | 397   | 124.73 - 122.83 = 1.90  | 397 - 366=31    |
| Alex J. Peden        | 5561          | 33    | bk168 | 178                  | 148        | 150        | 476   | 167.69 - 168.52 = -0.82 | 476 - 504=-28   |
| Jake Peden           | 6262          | 36    | bk173 | 157                  | 183        | 137        | 477   | 172.79 - 173.94 = -1.15 | 477 - 519=-42   |
| Greg A. Pettit       | 1829          | 9     | bk203 | 204                  | <b>244</b> | 172        | 620   | 204.08 - 203.22 = 0.86  | 620 - 609=11    |
| Tom Richmond         | 5833          | 30    | bk194 | <b>224</b>           | <b>232</b> | 170        | 626   | 195.73 - 194.43 = 1.29  | 626 - 582=44    |
| Lane E. Riffey       | 6260          | 36    | bk173 | 160                  | <b>204</b> | <b>243</b> | 607   | 176.08 - 173.89 = 2.19  | 607 - 519=88    |
| Trevor A. Roberts    | 3144          | 21    | bk149 |                      |            |            | 0     | 149.71 - 149.71 = 0.00  |                 |
| Jacob M. Rodriguez   | 2651          | 24    | 110   |                      |            |            | 0     | 110.46 - 110.46 = 0.00  |                 |
| Doug Samuelson       | 2547          | 18    | bk141 | 136                  | 125        | 115        | 376   | 139.19 - 141.50 = -2.31 | 376 - 423=-47   |
| Jared J. Samuelson   | 6914          | 33    | bk209 | <b>224</b>           | 189        | <b>208</b> | 621   | 209.31 - 209.52 = -0.21 | 621 - 627=-6    |
| Dan Schmidt          | 5944          | 30    | bk198 | <b>219</b>           | <b>227</b> | <b>223</b> | 669   | 200.39 - 198.13 = 2.26  | 669 - 594=75    |
| Kurt L. Schmidt      | 4138          | 21    | bk197 | <b>201</b>           | <b>203</b> | <b>207</b> | 611   | 197.88 - 197.05 = 0.83  | 611 - 591=20    |
| Jerry Schmitz        | 1170          | 6     | bk183 |                      |            |            | 0     | 195.00 - 195.00 = 0.00  |                 |
| Craig A. Schutt      | 5009          | 33    | bk151 | <b>142</b>           | <b>177</b> | 156        | 475   | 152.33 - 151.79 = 0.55  | 475 - 453=22    |
| Jeremy D. Sklenar    | 1288          | 6     | bk208 | <b>230</b>           | 188        | 225        | 643   | 214.56 - 214.67 = -0.11 | 643 - 624=19    |
| Keith J. Smith       | 6430          | 36    | bk178 | <b>212</b>           | <b>197</b> | <b>168</b> | 577   | 179.67 - 178.61 = 1.06  | 577 - 534=43    |
| Bob Stevens          | 5502          | 36    | bk152 | 173                  | 180        | <b>193</b> | 546   | 155.08 - 152.83 = 2.24  | 546 - 456=90    |
| Ivan D. Stones       | 4645          | 30    | bk154 | <b>203</b>           | 172        | 167        | 542   | 157.18 - 154.83 = 2.35  | 542 - 462=80    |
| Jason D. Stubbs      | 5919          | 33    | bk179 | 182                  | 169        | <b>224</b> | 575   | 180.39 - 179.36 = 1.03  | 575 - 537=38    |
| Ron J. Studnicka     | 5421          | 36    | bk150 | 176                  | <b>167</b> | <b>158</b> | 501   | 151.85 - 150.58 = 1.26  | 501 - 450=51    |
| Masato M. Sugita     | 7102          | 36    | bk197 | <b>192</b>           | <b>196</b> | <b>243</b> | 631   | 198.28 - 197.28 = 1.00  | 631 - 591=40    |
| Justin R. Swanek     | 5609          | 27    | bk207 | <b>257</b>           | <b>279</b> | 191        | 727   | 211.20 - 207.74 = 3.46  | 727 - 621=106   |
| Gordon E. Thiessen   | 4054          | 18    | bk225 |                      |            |            | 0     | 225.22 - 225.22 = 0.00  |                 |
| Bobby Turner Jr      | 6208          | 36    | bk172 | <b>182</b>           | <b>197</b> | <b>215</b> | 594   | 174.41 - 172.44 = 1.97  | 594 - 516=78    |
| Bob G. Vogt          | 543           | 3     | bk164 |                      |            |            | 0     | 181.00 - 181.00 = 0.00  |                 |
| Ryan E. Walton       | 6923          | 33    | bk209 | 212                  | 248        | <b>217</b> | 677   | 211.11 - 209.79 = 1.32  | 677 - 627=50    |
| Phillip O. White     | 640           | 6     | 106   |                      |            |            | 0     | 106.67 - 106.67 = 0.00  |                 |

Classic 2025-26

| Name             | -----Old----- |       | Old   |            |            |            |       | ---Average Change--- |          |                | Weekly Over Avg |
|------------------|---------------|-------|-------|------------|------------|------------|-------|----------------------|----------|----------------|-----------------|
|                  | Pins          | Games | Avg   | -1-        | -2-        | -3-        | Total | New - Old            | ---> +/- | Series Avg +/- |                 |
| Kevin L. Wise    | 6001          | 33    | bk181 | <b>188</b> | <b>179</b> | <b>200</b> | 567   | 182.44 - 181.85 =    | 0.60     | 567 - 543=24   |                 |
| Eric R. Zikmund  | 1650          | 9     | bk183 |            |            |            | 0     | 183.33 - 183.33 =    | 0.00     |                |                 |
| Jarod D. Zikmund | 7442          | 36    | bk206 | 182        | 180        | <b>217</b> | 579   | 205.67 - 206.72 =    | -1.06    | 579 - 618=-39  |                 |

# Classic 2025-26

## Big Apple Fun Center

\* Bowlers listed must have a minimum of 1 games.

### High Average Listing

|    | <u>Name</u>          | <u>True Average</u> | <u>Pins</u> | <u>Gms</u> | <u>To Raise Avg +1</u> | <u>To Drop Avg -1</u> |
|----|----------------------|---------------------|-------------|------------|------------------------|-----------------------|
| 1  | Gordon E. Thiessen   | 225.22              | 4054        | 18         | 692                    | 670                   |
| 2  | Jeremy D. Sklenar    | 214.56              | 1931        | 9          | 649                    | 636                   |
| 3  | Jeremy J. Dalland    | 214.10              | 6423        | 30         | 672                    | 638                   |
| 4  | Jerred J. Johnson    | 212.80              | 3192        | 15         | 642                    | 623                   |
| 5  | Justin R. Swanek     | 211.20              | 6336        | 30         | 660                    | 626                   |
| 6  | Ryan E. Walton       | 211.11              | 7600        | 36         | 668                    | 628                   |
| 7  | Jared J. Samuelson   | 209.31              | 7535        | 36         | 655                    | 615                   |
| 8  | Bruce A. Hatcher     | 205.83              | 1235        | 6          | 619                    | 609                   |
| 9  | Jarod D. Zikmund     | 205.67              | 8021        | 39         | 631                    | 588                   |
| 10 | Greg A. Pettit       | 204.08              | 2449        | 12         | 626                    | 610                   |
| 11 | Jason S. Feddersen   | 203.33              | 610         | 3          | 614                    | 607                   |
| 12 | Carter R. Hollis     | 202.04              | 4849        | 24         | 632                    | 604                   |
| 13 | Brad M. Olson        | 201.90              | 7874        | 39         | 610                    | 567                   |
| 14 | Dan Schmidt          | 200.39              | 6613        | 33         | 623                    | 586                   |
| 15 | Masato M. Sugita     | 198.28              | 7733        | 39         | 625                    | 582                   |
| 16 | Kurt L. Schmidt      | 197.88              | 4749        | 24         | 597                    | 569                   |
| 17 | Chuck M. Brisbin     | 197.33              | 7104        | 36         | 618                    | 578                   |
| 18 | Tom Richmond         | 195.73              | 6459        | 33         | 597                    | 560                   |
| 19 | Jerry Schmitz        | 195.00              | 1170        | 6          | 594                    | 584                   |
| 20 | Scott A. Bauer       | 194.77              | 5843        | 30         | 592                    | 558                   |
| 21 | Josh K. Krolkowski   | 193.83              | 6978        | 36         | 588                    | 548                   |
| 22 | Austin M. Longmore   | 191.61              | 6898        | 36         | 590                    | 550                   |
| 23 | Michael G. Marcellus | 190.80              | 5724        | 30         | 579                    | 545                   |
| 24 | Brandon M. Conyers   | 188.61              | 6790        | 36         | 581                    | 541                   |
| 25 | Tyler L. Mizner      | 188.12              | 6208        | 33         | 596                    | 559                   |
| 26 | Logan J. Albright    | 187.95              | 3947        | 21         | 565                    | 540                   |
| 27 | Tom McLeod           | 187.33              | 562         | 3          | 566                    | 559                   |
| 28 | Mike Brown           | 187.31              | 7305        | 39         | 591                    | 548                   |
| 29 | Jeff A. Fruhling     | 185.67              | 5570        | 30         | 568                    | 534                   |
| 30 | David D. Hibberd     | 183.87              | 7171        | 39         | 557                    | 514                   |
| 31 | Anthony C. Eigenberg | 183.44              | 6604        | 36         | 572                    | 532                   |
| 32 | Javan D. Clement     | 183.39              | 3301        | 18         | 563                    | 541                   |
| 33 | Eric R. Zikmund      | 183.33              | 1650        | 9          | 558                    | 545                   |
| 34 | Hewitt P. Moyer      | 182.88              | 4389        | 24         | 552                    | 524                   |
| 35 | Kevin L. Wise        | 182.44              | 6568        | 36         | 569                    | 529                   |
| 36 | Bob G. Vogt          | 181.00              | 543         | 3          | 549                    | 542                   |
| 37 | Jason D. Stubbs      | 180.39              | 6494        | 36         | 565                    | 525                   |
| 38 | Cody D. Bristow      | 180.36              | 6493        | 36         | 566                    | 526                   |
| 39 | Nathan R. Canfield   | 180.33              | 541         | 3          | 545                    | 538                   |
| 40 | Keith J. Smith       | 179.67              | 7007        | 39         | 553                    | 510                   |
| 41 | Shawn E. Mizner      | 176.21              | 5815        | 33         | 557                    | 520                   |
| 42 | Lane E. Riffey       | 176.08              | 6867        | 39         | 567                    | 524                   |
| 43 | Bobby Turner Jr      | 174.41              | 6802        | 39         | 548                    | 505                   |
| 44 | Jake Peden           | 172.79              | 6739        | 39         | 527                    | 484                   |
| 45 | Trevor D. Hibberd    | 172.70              | 5181        | 30         | 528                    | 494                   |
| 46 | Doug Houtz           | 169.67              | 509         | 3          | 511                    | 504                   |
| 47 | Alex J. Peden        | 167.69              | 6037        | 36         | 515                    | 475                   |
| 48 | Justin M. Hodges     | 167.67              | 6539        | 39         | 517                    | 474                   |

|    | <b>Name</b>         | <b>True<br/>Average</b> | <b>Pins</b> | <b>Gms</b> | <b>To Raise<br/>Avg +1</b> | <b>To Drop<br/>Avg -1</b> |
|----|---------------------|-------------------------|-------------|------------|----------------------------|---------------------------|
| 49 | Chris R. Lytle      | 167.44                  | 4521        | 27         | 519                        | 488                       |
| 50 | Cruz A. Evans       | 166.94                  | 5509        | 33         | 503                        | 466                       |
| 51 | Gary D. Hatcher     | 165.25                  | 3966        | 24         | 516                        | 488                       |
| 52 | Danny Jeffryes      | 165.15                  | 4459        | 27         | 521                        | 490                       |
| 53 | Johnny L. Nikkila   | 164.92                  | 5937        | 36         | 498                        | 458                       |
| 54 | Nathan Banks        | 160.33                  | 1924        | 12         | 491                        | 475                       |
| 55 | Ivan D. Stones      | 157.18                  | 5187        | 33         | 501                        | 464                       |
| 56 | Doug Giles          | 155.57                  | 4667        | 30         | 481                        | 447                       |
| 57 | Bob Stevens         | 155.08                  | 6048        | 39         | 504                        | 461                       |
| 58 | Kirk E. Kossman     | 153.33                  | 460         | 3          | 464                        | 457                       |
| 59 | Mike McCollough     | 153.04                  | 3673        | 24         | 485                        | 457                       |
| 60 | Ethan M. Mizner     | 152.78                  | 2750        | 18         | 463                        | 441                       |
| 61 | Craig A. Schutt     | 152.33                  | 5484        | 36         | 483                        | 443                       |
| 62 | Ron J. Studnicka    | 151.85                  | 5922        | 39         | 462                        | 419                       |
| 63 | Trevor A. Roberts   | 149.71                  | 3144        | 21         | 456                        | 431                       |
| 64 | Bill Kirkland       | 148.17                  | 5334        | 36         | 477                        | 437                       |
| 65 | Brent E. Hollis     | 145.58                  | 1747        | 12         | 443                        | 427                       |
| 66 | Quentin S. Holliday | 144.38                  | 5631        | 39         | 459                        | 416                       |
| 67 | Nolan P. Parr       | 143.33                  | 2580        | 18         | 444                        | 422                       |
| 68 | Matthew J. Doerr    | 142.19                  | 2986        | 21         | 446                        | 421                       |
| 69 | Andrew J. Kennedy   | 140.39                  | 4633        | 33         | 443                        | 406                       |
| 70 | Doug Samuelson      | 139.19                  | 2923        | 21         | 437                        | 412                       |
| 71 | Chris P. Drew       | 137.83                  | 827         | 6          | 415                        | 405                       |
| 72 | Leroy H. Hoss       | 137.23                  | 5352        | 39         | 444                        | 401                       |
| 73 | Sean A. McBride     | 136.13                  | 3267        | 24         | 432                        | 404                       |
| 74 | Carter S. Krause    | 135.83                  | 4890        | 36         | 414                        | 374                       |
| 75 | Brooks D. Paul      | 134.36                  | 5240        | 39         | 430                        | 387                       |
| 76 | JD Einspahr         | 128.17                  | 3076        | 24         | 407                        | 379                       |
| 77 | John W. Paul        | 124.73                  | 1871        | 15         | 379                        | 360                       |
| 78 | Lee M. Dobish       | 124.33                  | 373         | 3          | 377                        | 370                       |
| 79 | Kodie D. Kershner   | 117.12                  | 3865        | 33         | 383                        | 346                       |
| 80 | Jacob M. Rodriguez  | 110.46                  | 2651        | 24         | 346                        | 318                       |
| 81 | Phillip O. White    | 106.67                  | 640         | 6          | 323                        | 313                       |

# Classic 2025-26

## Big Apple Fun Center

\* Bowlers listed must have a minimum of 22 games.

Note: This report includes information through December 1 which is Week 13 of 32

### Most Improved Averages

| Name                 | True    |     | Most Improved |        | Name                 | True    |     | Most Improved |       |
|----------------------|---------|-----|---------------|--------|----------------------|---------|-----|---------------|-------|
|                      | Average | Gms | Avg           | +/-    |                      | Average | Gms | Avg           | +/-   |
| Bobby Turner Jr      | 174.41  | 39  | 163           | +11.41 | Justin M. Hodges     | 167.67  | 39  | 166           | +1.67 |
| Brandon M. Conyers   | 188.61  | 36  | 180           | +8.61  | Gary D. Hatcher      | 165.25  | 24  | 164           | +1.25 |
| Dan Schmidt          | 200.39  | 33  | 192           | +8.39  | Kurt L. Schmidt      | 197.88  | 24  | 197           | +0.88 |
| David D. Hibberd     | 183.87  | 39  | 176           | +7.87  | Scott A. Bauer       | 194.77  | 30  | 194           | +0.77 |
| Chuck M. Brisbin     | 197.33  | 36  | 190           | +7.33  | Jacob M. Rodriguez   | 110.46  | 24  | 110           | +0.46 |
| Austin M. Longmore   | 191.61  | 36  | 185           | +6.61  | Craig A. Schutt      | 152.33  | 36  | 152           | +0.33 |
| Bill Kirkland        | 148.17  | 36  | 142           | +6.17  | Jared J. Samuelson   | 209.31  | 36  | 209           | +0.31 |
| Kodie D. Kershner    | 117.12  | 33  | 111           | +6.12  | Masato M. Sugita     | 198.28  | 39  | 198           | +0.28 |
| Ryan E. Walton       | 211.11  | 36  | 205           | +6.11  | Sean A. McBride      | 136.13  | 24  | 136           | +0.13 |
| Ivan D. Stones       | 157.18  | 33  | 152           | +5.18  | Carter R. Hollis     | 202.04  | 24  | 202           | +0.04 |
| Brad M. Olson        | 201.90  | 39  | 197           | +4.90  | Hewitt P. Moyer      | 182.88  | 24  | 183           | -0.13 |
| Andrew J. Kennedy    | 140.39  | 33  | 136           | +4.39  | Carter S. Krause     | 135.83  | 36  | 136           | -0.17 |
| Leroy H. Hoss        | 137.23  | 39  | 133           | +4.23  | Alex J. Peden        | 167.69  | 36  | 168           | -0.31 |
| Chris R. Lytle       | 167.44  | 27  | 164           | +3.44  | Jarod D. Zikmund     | 205.67  | 39  | 207           | -1.33 |
| Jason D. Stubbs      | 180.39  | 36  | 177           | +3.39  | Brooks D. Paul       | 134.36  | 39  | 136           | -1.64 |
| Cody D. Bristow      | 180.36  | 36  | 177           | +3.36  | Mike Brown           | 187.31  | 39  | 189           | -1.69 |
| Justin R. Swanek     | 211.20  | 30  | 208           | +3.20  | Danny Jeffryes       | 165.15  | 27  | 167           | -1.85 |
| Bob Stevens          | 155.08  | 39  | 152           | +3.08  | Jake Peden           | 172.79  | 39  | 175           | -2.21 |
| Mike McCollough      | 153.04  | 24  | 150           | +3.04  | Jeff A. Fruhling     | 185.67  | 30  | 188           | -2.33 |
| Johnny L. Nikkila    | 164.92  | 36  | 162           | +2.92  | Kevin L. Wise        | 182.44  | 36  | 185           | -2.56 |
| Ron J. Studnicka     | 151.85  | 39  | 149           | +2.85  | Anthony C. Eigenberg | 183.44  | 36  | 187           | -3.56 |
| Tom Richmond         | 195.73  | 33  | 193           | +2.73  | Shawn E. Mizner      | 176.21  | 33  | 180           | -3.79 |
| Keith J. Smith       | 179.67  | 39  | 177           | +2.67  | Lane E. Riffey       | 176.08  | 39  | 180           | -3.92 |
| Doug Giles           | 155.57  | 30  | 153           | +2.57  | Cruz A. Evans        | 166.94  | 33  | 171           | -4.06 |
| JD Einspahr          | 128.17  | 24  | 126           | +2.17  | Jeremy J. Dalland    | 214.10  | 30  | 219           | -4.90 |
| Tyler L. Mizner      | 188.12  | 33  | 186           | +2.12  | Quentin S. Holliday  | 144.38  | 39  | 151           | -6.62 |
| Michael G. Marcellus | 190.80  | 30  | 189           | +1.80  | Josh K. Krolikowski  | 193.83  | 36  | 202           | -8.17 |
| Trevor D. Hibberd    | 172.70  | 30  | 171           | +1.70  |                      |         |     |               |       |

# Classic 2025-26

## Big Apple Fun Center

\* Bowlers listed must have a minimum of 1 games.

### Most Pins Over Average

| Name               | -----Old----- |       | Old   |            |            |            |       | ---Average Change--- |          |          | Weekly Over Avg |
|--------------------|---------------|-------|-------|------------|------------|------------|-------|----------------------|----------|----------|-----------------|
|                    | Pins          | Games | Avg   | -1-        | -2-        | -3-        | Total | New                  | Old      | ---> +/- | Series Avg +/-  |
| Justin R. Swanek   | 5609          | 27    | bk207 | <b>257</b> | <b>279</b> | 191        | 727   | 211.20               | - 207.74 | = 3.46   | 727 - 621=106   |
| Brandon M. Conyers | 6135          | 33    | bk185 | 220        | 200        | <b>235</b> | 655   | 188.61               | - 185.91 | = 2.70   | 655 - 555=100   |
| Bob Stevens        | 5502          | 36    | bk152 | 173        | 180        | <b>193</b> | 546   | 155.08               | - 152.83 | = 2.24   | 546 - 456=90    |
| Lane E. Riffey     | 6260          | 36    | bk173 | 160        | <b>204</b> | <b>243</b> | 607   | 176.08               | - 173.89 | = 2.19   | 607 - 519=88    |
| Bill Kirkland      | 4814          | 33    | bk145 | 169        | <b>189</b> | <b>162</b> | 520   | 148.17               | - 145.88 | = 2.29   | 520 - 435=85    |
| Jerred J. Johnson  | 2489          | 12    | bk207 | <b>268</b> | <b>237</b> | 198        | 703   | 212.80               | - 207.42 | = 5.38   | 703 - 621=82    |
| Ivan D. Stones     | 4645          | 30    | bk154 | <b>203</b> | 172        | 167        | 542   | 157.18               | - 154.83 | = 2.35   | 542 - 462=80    |
| Bobby Turner Jr    | 6208          | 36    | bk172 | <b>182</b> | <b>197</b> | <b>215</b> | 594   | 174.41               | - 172.44 | = 1.97   | 594 - 516=78    |
| Dan Schmidt        | 5944          | 30    | bk198 | <b>219</b> | <b>227</b> | <b>223</b> | 669   | 200.39               | - 198.13 | = 2.26   | 669 - 594=75    |
| Mike McCollough    | 3169          | 21    | bk150 | <b>168</b> | <b>214</b> | 122        | 504   | 153.04               | - 150.90 | = 2.14   | 504 - 450=54    |
| Leroy H. Hoss      | 4894          | 36    | bk135 | <b>138</b> | <b>170</b> | 150        | 458   | 137.23               | - 135.94 | = 1.29   | 458 - 405=53    |
| Ron J. Studnicka   | 5421          | 36    | bk150 | 176        | <b>167</b> | <b>158</b> | 501   | 151.85               | - 150.58 | = 1.26   | 501 - 450=51    |
| Ryan E. Walton     | 6923          | 33    | bk209 | 212        | 248        | <b>217</b> | 677   | 211.11               | - 209.79 | = 1.32   | 677 - 627=50    |
| Chuck M. Brisbin   | 6469          | 33    | bk196 | 187        | <b>225</b> | <b>223</b> | 635   | 197.33               | - 196.03 | = 1.30   | 635 - 588=47    |
| Tom Richmond       | 5833          | 30    | bk194 | <b>224</b> | <b>232</b> | 170        | 626   | 195.73               | - 194.43 | = 1.29   | 626 - 582=44    |
| Keith J. Smith     | 6430          | 36    | bk178 | <b>212</b> | <b>197</b> | <b>168</b> | 577   | 179.67               | - 178.61 | = 1.06   | 577 - 534=43    |
| Mike Brown         | 6705          | 36    | bk186 | 200        | <b>234</b> | 166        | 600   | 187.31               | - 186.25 | = 1.06   | 600 - 558=42    |
| Logan J. Albright  | 3349          | 18    | bk186 | <b>194</b> | <b>244</b> | <b>160</b> | 598   | 187.95               | - 186.06 | = 1.90   | 598 - 558=40    |
| Masato M. Sugita   | 7102          | 36    | bk197 | <b>192</b> | <b>196</b> | <b>243</b> | 631   | 198.28               | - 197.28 | = 1.00   | 631 - 591=40    |
| Nolan P. Parr      | 2118          | 15    | bk141 | <b>184</b> | 138        | 140        | 462   | 143.33               | - 141.20 | = 2.13   | 462 - 423=39    |
| Jason D. Stubbs    | 5919          | 33    | bk179 | 182        | 169        | <b>224</b> | 575   | 180.39               | - 179.36 | = 1.03   | 575 - 537=38    |
| Justin M. Hodges   | 6003          | 36    | bk166 | 183        | 151        | <b>202</b> | 536   | 167.67               | - 166.75 | = 0.92   | 536 - 498=38    |
| JD Einspahr        | 2666          | 21    | bk126 | 141        | <b>143</b> | 126        | 410   | 128.17               | - 126.95 | = 1.21   | 410 - 378=32    |
| John W. Paul       | 1474          | 12    | bk122 | <b>147</b> | 129        | 121        | 397   | 124.73               | - 122.83 | = 1.90   | 397 - 366=31    |
| Kevin L. Wise      | 6001          | 33    | bk181 | <b>188</b> | <b>179</b> | <b>200</b> | 567   | 182.44               | - 181.85 | = 0.60   | 567 - 543=24    |
| Carter S. Krause   | 4461          | 33    | 135   | <b>168</b> | 145        | 116        | 429   | 135.83               | - 135.18 | = 0.65   | 429 - 405=24    |
| Craig A. Schutt    | 5009          | 33    | bk151 | <b>142</b> | <b>177</b> | 156        | 475   | 152.33               | - 151.79 | = 0.55   | 475 - 453=22    |
| Gary D. Hatcher    | 3454          | 21    | bk164 | 136        | <b>174</b> | <b>202</b> | 512   | 165.25               | - 164.48 | = 0.77   | 512 - 492=20    |
| Kurt L. Schmidt    | 4138          | 21    | bk197 | <b>201</b> | <b>203</b> | <b>207</b> | 611   | 197.88               | - 197.05 | = 0.83   | 611 - 591=20    |
| Jeremy D. Sklenar  | 1288          | 6     | bk208 | <b>230</b> | 188        | 225        | 643   | 214.56               | - 214.67 | = -0.11  | 643 - 624=19    |
| Johnny L. Nikkila  | 5427          | 33    | bk164 | <b>204</b> | <b>166</b> | 140        | 510   | 164.92               | - 164.45 | = 0.46   | 510 - 492=18    |
| Trevor D. Hibberd  | 4648          | 27    | bk172 | <b>195</b> | 169        | 169        | 533   | 172.70               | - 172.15 | = 0.55   | 533 - 516=17    |
| Greg A. Pettit     | 1829          | 9     | bk203 | 204        | <b>244</b> | 172        | 620   | 204.08               | - 203.22 | = 0.86   | 620 - 609=11    |
| Ethan M. Mizner    | 2283          | 15    | bk152 | <b>168</b> | 150        | <b>149</b> | 467   | 152.78               | - 152.20 | = 0.58   | 467 - 456=11    |
| Brad M. Olson      | 7268          | 36    | bk201 | <b>225</b> | <b>214</b> | <b>167</b> | 606   | 201.90               | - 201.89 | = 0.01   | 606 - 603=3     |
| Cruz A. Evans      | 5011          | 30    | bk167 | 120        | <b>191</b> | <b>187</b> | 498   | 166.94               | - 167.03 | = -0.09  | 498 - 501=-3    |
| Danny Jeffryes     | 3970          | 24    | bk165 | 156        | <b>155</b> | 178        | 489   | 165.15               | - 165.42 | = -0.27  | 489 - 495=-6    |

Classic 2025-26

| Name                 | -----Old----- |       | Old   |            |            |            |       | ---Average Change--- |          |          | Weekly Over Avg |
|----------------------|---------------|-------|-------|------------|------------|------------|-------|----------------------|----------|----------|-----------------|
|                      | Pins          | Games | Avg   | -1-        | -2-        | -3-        | Total | New                  | Old      | ---> +/- | Series Avg +/-  |
| Jared J. Samuelson   | 6914          | 33    | bk209 | <b>224</b> | 189        | <b>208</b> | 621   | 209.31               | - 209.52 | = -0.21  | 621 - 627=-6    |
| Carter R. Hollis     | 4251          | 21    | bk202 | <b>160</b> | <b>189</b> | <b>249</b> | 598   | 202.04               | - 202.43 | = -0.39  | 598 - 606=-8    |
| Quentin S. Holliday  | 5208          | 36    | bk144 | 104        | 149        | <b>170</b> | 423   | 144.38               | - 144.67 | = -0.28  | 423 - 432=-9    |
| Hewitt P. Moyer      | 3852          | 21    | bk183 | 182        | <b>173</b> | <b>182</b> | 537   | 182.88               | - 183.43 | = -0.55  | 537 - 549=-12   |
| Anthony C. Eigenberg | 6068          | 33    | bk183 | <b>189</b> | 168        | <b>179</b> | 536   | 183.44               | - 183.88 | = -0.43  | 536 - 549=-13   |
| Sean A. McBride      | 2873          | 21    | bk136 | <b>162</b> | <b>130</b> | 102        | 394   | 136.13               | - 136.81 | = -0.68  | 394 - 408=-14   |
| Brooks D. Paul       | 4854          | 36    | bk134 | 118        | 153        | 115        | 386   | 134.36               | - 134.83 | = -0.47  | 386 - 402=-16   |
| David D. Hibberd     | 6635          | 36    | bk184 | <b>201</b> | 139        | <b>196</b> | 536   | 183.87               | - 184.31 | = -0.43  | 536 - 552=-16   |
| Alex J. Peden        | 5561          | 33    | bk168 | 178        | 148        | 150        | 476   | 167.69               | - 168.52 | = -0.82  | 476 - 504=-28   |
| Jarod D. Zikmund     | 7442          | 36    | bk206 | 182        | 180        | <b>217</b> | 579   | 205.67               | - 206.72 | = -1.06  | 579 - 618=-39   |
| Jake Peden           | 6262          | 36    | bk173 | 157        | 183        | 137        | 477   | 172.79               | - 173.94 | = -1.15  | 477 - 519=-42   |
| Jeff A. Fruhling     | 5053          | 27    | bk187 | 174        | 162        | <b>181</b> | 517   | 185.67               | - 187.15 | = -1.48  | 517 - 561=-44   |
| Jeremy J. Dalland    | 5825          | 27    | bk215 | 182        | 204        | 212        | 598   | 214.10               | - 215.74 | = -1.64  | 598 - 645=-47   |
| Doug Samuelson       | 2547          | 18    | bk141 | 136        | 125        | 115        | 376   | 139.19               | - 141.50 | = -2.31  | 376 - 423=-47   |
| Josh K. Krolkowski   | 6448          | 33    | bk195 | 145        | 190        | 195        | 530   | 193.83               | - 195.39 | = -1.56  | 530 - 585=-55   |
| Austin M. Longmore   | 6385          | 33    | bk193 | 170        | 182        | 161        | 513   | 191.61               | - 193.48 | = -1.87  | 513 - 579=-66   |
| Matthew J. Doerr     | 2620          | 18    | bk145 | 131        | 138        | 97         | 366   | 142.19               | - 145.56 | = -3.37  | 366 - 435=-69   |
| Tyler L. Mizner      | 5715          | 30    | bk190 | 141        | 167        | 185        | 493   | 188.12               | - 190.50 | = -2.38  | 493 - 570=-77   |

# Classic 2025-26

## Big Apple Fun Center

This report is for scores bowled December 1 which is Week 13 of 32

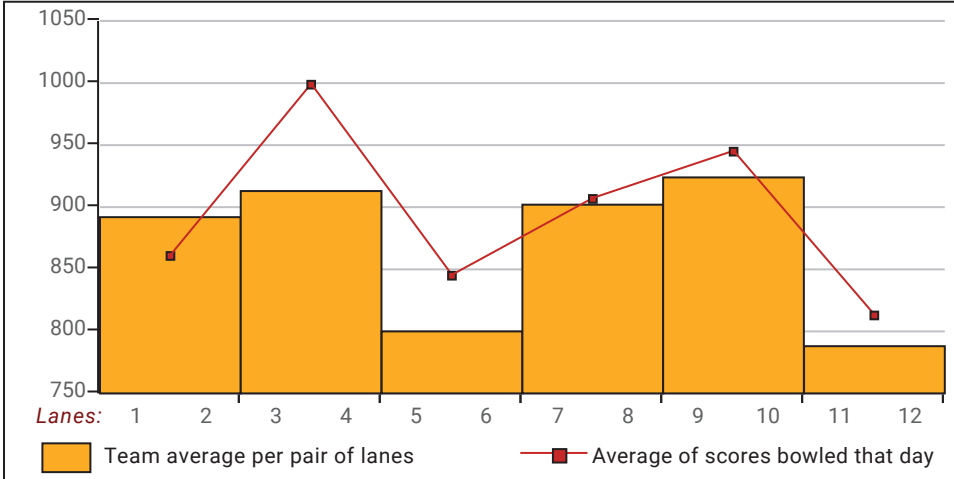
### This Week's Statistics: Lefties vs Righties

Unless designated left handed, bowlers are considered right handed.

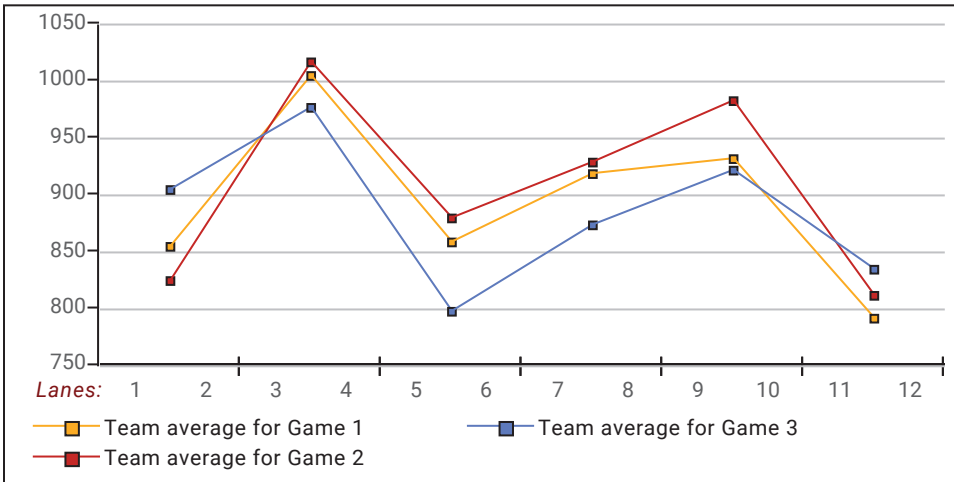
|                                   | Over All | Right  | Left   |
|-----------------------------------|----------|--------|--------|
| How many people bowled            | 55       | 54     | 1      |
| Number of games bowled            | 165      | 162    | 3      |
| Actual average of week's scores   | 179.79   | 180.80 | 125.33 |
| How many games above average      | 91       | 91     | 0      |
| How many games below average      | 72       | 69     | 3      |
| Pins above/below average per game | 5.94     | 6.34   | -15.67 |
| How many people raised average    | 34       | 34     | --     |
| by this amount                    | 1.51     | 1.51   | 0.00   |
| How many people went down         | 21       | 20     | 1      |
| by this amount                    | -1.03    | -0.96  | -2.31  |
| League average before bowling     | 174.40   | 175.01 | 141.50 |
| League average after bowling      | 174.94   | 175.60 | 139.19 |
| Change in league average          | 0.54     | 0.60   | -2.31  |
| 800s                              | --       | --     | --     |
| 775s                              | --       | --     | --     |
| 750s                              | --       | --     | --     |
| 725s                              | 1        | 1      | --     |
| 700s                              | 1        | 1      | --     |
| 675s                              | 1        | 1      | --     |
| 650s                              | 2        | 2      | --     |
| 625s                              | 4        | 4      | --     |
| 600s                              | 6        | 6      | --     |
| 575s                              | 7        | 7      | --     |
| 550s                              | 1        | 1      | --     |
| 525s                              | 8        | 8      | --     |
| 500s                              | 7        | 7      | --     |
| 475s                              | 6        | 6      | --     |
| 450s                              | 3        | 3      | --     |
| 425s                              | 1        | 1      | --     |
| 400s                              | 2        | 2      | --     |
| below 400                         | 5        | 4      | 1      |
| 300s                              | --       | --     | --     |
| 275s                              | 1        | 1      | --     |
| 250s                              | 2        | 2      | --     |
| 225s                              | 15       | 15     | --     |
| 200s                              | 30       | 30     | --     |
| 175s                              | 41       | 41     | --     |
| 150s                              | 42       | 42     | --     |
| 125s                              | 24       | 22     | 2      |
| 100s                              | 9        | 8      | 1      |
| below 100                         | 1        | 1      | --     |

This report is for scores bowled December 1 which is Week 13 of 32

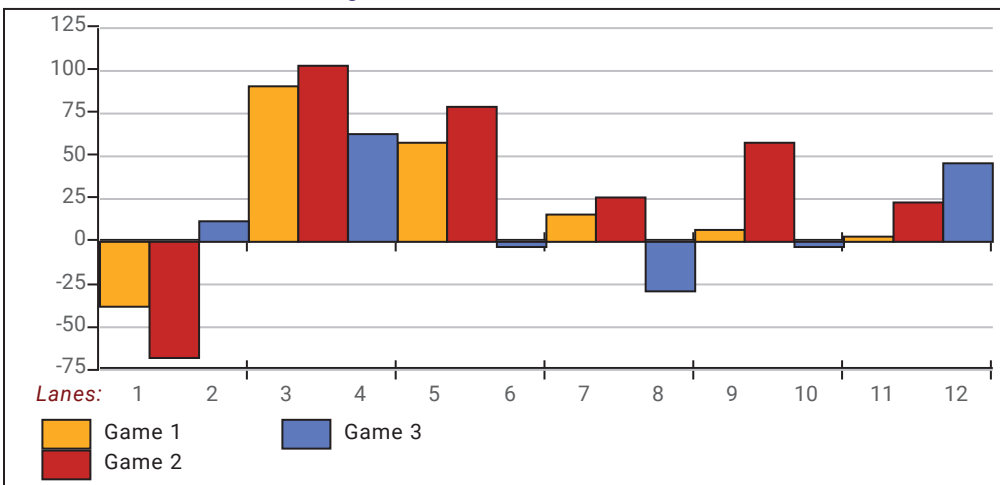
**Team Average vs Avg of Scores**



**Average of Scores for Each Game**

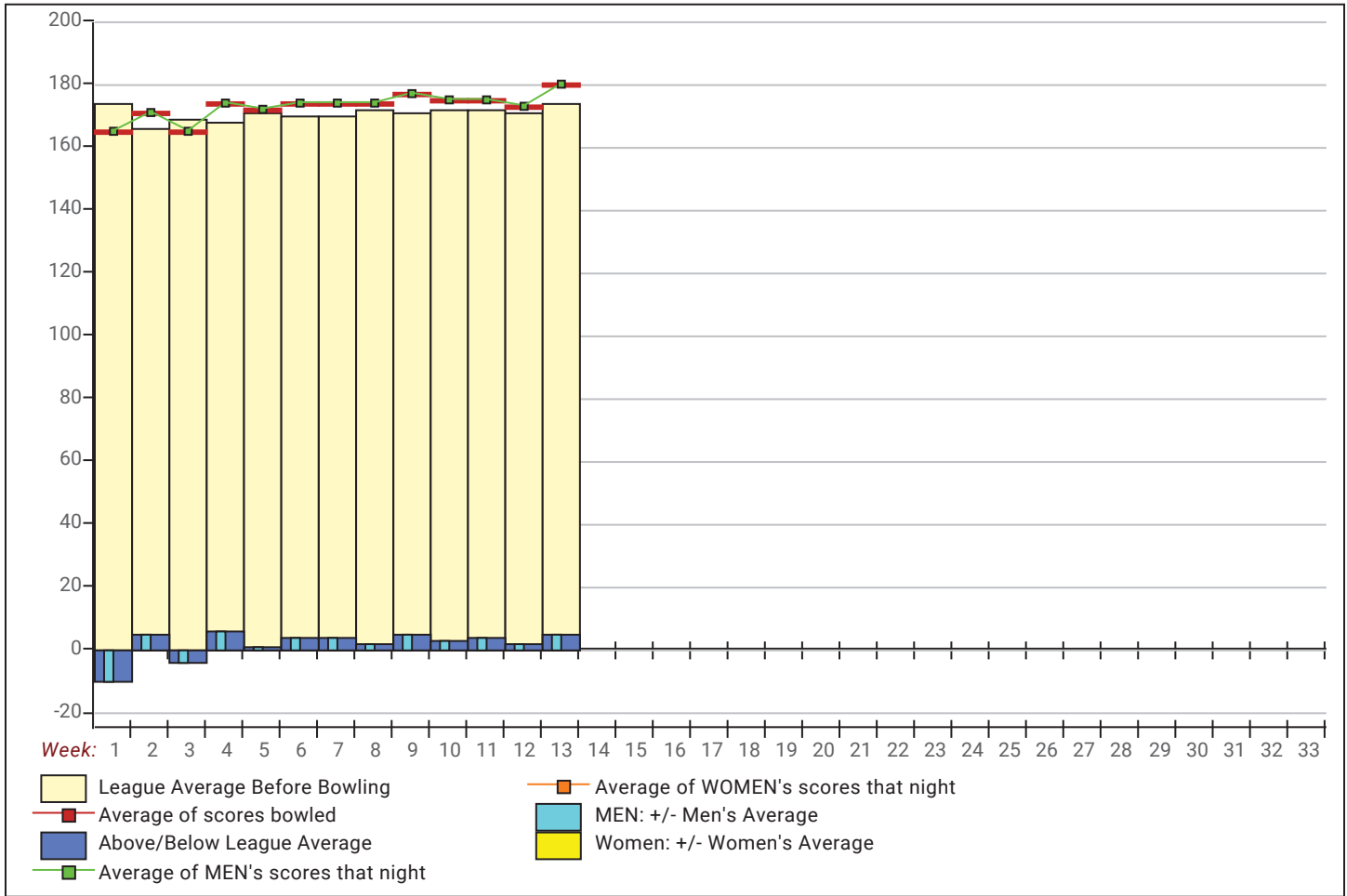


**Amount Over/Under Team Average**



This report is for scores bowled December 1 which is Week 13 of 32

**League Average Week-by-Week**



**League Average Statistics for Last Week**

|                                     | League | Right Hand | Left Hand |
|-------------------------------------|--------|------------|-----------|
| League Average Before Bowling       | 174.40 | 175.01     | 141.50    |
| Average of scores bowled that night | 179.79 | 180.80     | 125.33    |
| New League Average After Bowling    | 174.94 | 175.60     | 139.19    |
| Change in League Average            | .54    | .60        | -2.31     |
| People Who Bowled Over Average      | 34     | 34         |           |
| People Who Bowled Under Average     | 21     | 20         | 1         |
| Average Amount of Series Over Avg   | 46.94  | 46.94      |           |
| Average Amount of Series Under Avg  | -29.33 | -28.45     | -47.00    |
| Difference Avg, NiteAvg             | 5.94   | 6.34       | -15.67    |
| Number of Bowlers                   | 55     | 54         | 1         |
| Number of Games Bowled              | 165    | 162        | 3         |
| People Who Raised Their Average     | 34     | 34         |           |
| Raised By an Average of This Amount | 1.51   | 1.51       |           |
| People Who Lowered Their Average    | 21     | 20         | 1         |
| Lowered By an Average of This Amou  | -1.03  | -.96       | -2.31     |
| Number of Games Bowled Over Avera   | 91     | 91         |           |
| Number of Games Bowled Under Avera  | 72     | 69         | 3         |

*Note: Averages are based only on people who bowled.*

# Press Release -- 12/2/2025

12/1/2025 Week 13 of 32

## Classic 2025-26

Monday 6:30 pm

Big Apple Fun Center

Lanes 1 - 12

### Team Standings

| Place | Team Name                | Avg p/gm | Points Won | Points Lost | Year-To-Date WON | Y-T-D LOST |
|-------|--------------------------|----------|------------|-------------|------------------|------------|
| 1     | AB Service & Repair      | 866      | 96         | 24          | 302½             | 217½       |
| 2     | Kennedy Arborcare        | 851      | 88         | 32          | 287              | 233        |
| 3     | Crash Test Brisbins      | 981      | 77         | 43          | 314              | 206        |
| 4     | Kirkland Siding          | 882      | 72½        | 47½         | 228½             | 291½       |
| 5     | Jack Lederman Co.        | 853      | 67         | 53          | 251½             | 268½       |
| 6     | West                     | 881      | 60½        | 59½         | 242½             | 277½       |
| 7     | Little Mexico Restaurant | 735      | 52         | 68          | 266½             | 253½       |
| 8     | Cornhusker Ag/Rising Ag  | 901      | 51         | 69          | 251              | 269        |
| 9     | Common Cents Bookkeeping | 897      | 47         | 73          | 206              | 314        |
| 10    | Sorensen Group           | 935      | 37         | 83          | 225½             | 294½       |
| 11    | Peerless Machine         | 724      | 26½        | 93½         | 249              | 271        |
| 12    | Draw Team                | 867      | 45½        | 74½         | 296              | 224        |

\*\*\* Although not shown, standings are determined by points only for the current split

### Last Week's Top Scores

| Scratch Game |                 | Scratch Series |                 | Handicap Game |                 | Handicap Series |                 |
|--------------|-----------------|----------------|-----------------|---------------|-----------------|-----------------|-----------------|
| 279          | Justin Swaneck  | 727            | Justin Swaneck  | 287           | Justin Swaneck  | 751             | Justin Swaneck  |
| 268          | Jerred Johnson  | 703            | Jerred Johnson  | 285           | Lane Riffey     | 745             | Brandon Conyers |
| 249          | Carter Hollis   | 677            | Ryan Walton     | 279           | Mike McCollough | 735             | Bob Stevens     |
| 248          | Ryan Walton     | 669            | Dan Schmidt     | 276           | Jerred Johnson  | 733             | Lane Riffey     |
| 244          | Logan Albright  | 655            | Brandon Conyers | 273           | Logan Albright  | 730             | Bill Kirkland   |
| 244          | Greg Pettit     | 643            | Jeremy Sklenar  | 265           | Brandon Conyers | 727             | Jerred Johnson  |
| 243          | Lane Riffey     | 635            | Chuck Brisbin   | 264           | Ivan Stones     | 725             | Ivan Stones     |
| 243          | Masato Sugita   | 631            | Masato Sugita   | 263           | Mike Brown      | 723             | Bobby Turner Jr |
| 235          | Brandon Conyers | 626            | Tom Richmond    | 262           | Carter Hollis   | 720             | Dan Schmidt     |
| 234          | Mike Brown      | 621            | Jared Samuelson | 261           | Masato Sugita   | 699             | Mike McCollough |

### Local and Bowling Center Awards

| Name               | USBC ID Number | Award Average | Award Games | G1         | G2         | G3         | Series     | Award Score | Award Received                            |
|--------------------|----------------|---------------|-------------|------------|------------|------------|------------|-------------|---|
| Logan J. Albright  | 1494-2865 USBC | 184           | 48          | 194        | <b>244</b> | 160        | 598        | 244         | 225 Game (Local Assoc. Awards)            |
| Chuck M. Brisbin   | 1494-789 USBC  | 196           |             | 187        | <b>225</b> | 223        | 635        | 225         | Clean Game (199 Average or Les (Local Ass |
|                    | 1494-789 USBC  | 196           |             | 187        | <b>225</b> | <b>223</b> | 635        | 223         | Clean Game (199 Average or Les (Local Ass |
| Mike Brown         | 11-772931 USBC | 186           | 36          | 200        | <b>234</b> | 166        | 600        | 234         | 225 Game (Local Assoc. Awards)            |
| Brandon M. Conyers | 11-187244 USBC | 185           | 33          | 220        | 200        | <b>235</b> | 655        | 235         | 225 Game (Local Assoc. Awards)            |
| Gary D. Hatcher    | 1494-256 USBC  | 164           | 21          | 136        | 174        | <b>202</b> | 512        | 202         | 200 Game (Local Assoc. Awards)            |
| Jerred J. Johnson  | 1494-2364 USBC | 207           | 12          | 268        | 237        | 198        | <b>703</b> | 703         | 700 Series (Local Assoc. Awards)          |
|                    | 1494-2364 USBC | 208           | 60          | <b>268</b> | 237        | 198        | 703        | 268         | 250 Game (Local Assoc. Awards)            |
| Bill Kirkland      | 1494-1989 USBC | 145           | 33          | 169        | 189        | 162        | <b>520</b> | 520         | 500 Series (Local Assoc. Awards)          |
| Mike McCollough    | 1494-2687 USBC | 150           | 21          | 168        | <b>214</b> | 122        | 504        | 214         | 200 Game (Local Assoc. Awards)            |
| Johnny L. Nikkila  | 1494-182 USBC  | 164           |             | <b>204</b> | 166        | 140        | 510        | 204         | Clean Game (199 Average or Les (Local Ass |
|                    | 1494-182 USBC  | 164           | 33          | <b>204</b> | 166        | 140        | 510        | 204         | 200 Game (Local Assoc. Awards)            |
| Nolan P. Parr      | 15-159300 USBC | 128           | 51          | <b>184</b> | 138        | 140        | 462        | 184         | 175 Game (Local Assoc. Awards)            |
| Tom Richmond       | 1494-1207 USBC | 194           |             | <b>224</b> | 232        | 170        | 626        | 224         | Clean Game (199 Average or Les (Local Ass |
| Lane E. Riffey     | 9726-4347 USBC | 173           | 36          | 160        | 204        | 243        | <b>607</b> | 607         | 600 Series (Local Assoc. Awards)          |
|                    | 9726-4347 USBC | 173           | 36          | 160        | 204        | <b>243</b> | 607        | 243         | 225 Game (Local Assoc. Awards)            |
| Ivan D. Stones     | 1494-6 USBC    | 154           | 30          | <b>203</b> | 172        | 167        | 542        | 203         | 200 Game (Local Assoc. Awards)            |
|                    | 1494-6 USBC    | 154           |             | <b>203</b> | 172        | 167        | 542        | 203         | Clean Game (199 Average or Les (Local Ass |
| Jason D. Stubbs    | 1494-1079 USBC | 179           |             | 182        | 169        | <b>224</b> | 575        | 224         | Clean Game (199 Average or Les (Local Ass |
| Justin R. Swaneck  | 1489-1082 USBC | 207           | 27          | 257        | 279        | 191        | <b>727</b> | 727         | 700 Series (Local Assoc. Awards)          |

# Press Release -- 12/2/2025

## Classic 2025-26

| <u>Name</u>      | <u>USBC<br/>ID Number</u> | <u>Award<br/>Average</u> | <u>Award<br/>Games</u> | <u>G1</u> | <u>G2</u> | <u>G3</u> | <u>Series</u> | <u>Award<br/>Score</u> | <u>Award Received</u>                      |
|------------------|---------------------------|--------------------------|------------------------|-----------|-----------|-----------|---------------|------------------------|--|
| Justin R. Swanek | 1489-1082 USBC            | 207                      | 27                     | 257       | 279       | 191       | 727           | 257                    | 250 Game (Local Assoc. Awards)             |
|                  | 1489-1082 USBC            | 207                      |                        | 257       | 279       | 191       | 727           | 279                    | 11 Strikes in a Game (Local Assoc. Awards) |
|                  | 1489-1082 USBC            | 207                      | 27                     | 257       | 279       | 191       | 727           | 279                    | 275 Game (Local Assoc. Awards)             |