

# Pinette 2022-23

Friday 6:30 pm

## Big Apple Fun Center

Lanes 1 - 8

President: Sue Janssen Vice President: Bev Walton  
Secretary/Treasurer: Rebecca McPherson

### Team Standings

Place	#	Team Name	Points	Points	Team	Pins +	Scratch	High Scratch		High HDCP		
			Won	Lost	Avg	HDCP	HDCP	Pins	10	30	10	30
1	4	Turner Body Shop #1	83½	51½	515	254	35272	25771	681	1900	883	2470
2	6	Turner Body Shop of Holdrege	78½	56½	536	236	34979	24740	648	1785	870	2468
3	5	Dames of the Game	77½	57½	490	277	34801	24103	661	1840	892	2533
4	3	Hilton's Pin Buster	75½	59½	496	272	34744	24010	697	1896	900	2505
5	7	Versatile Roofing	68½	66½	389	369	33867	19656	557	1539	866	2466
6	2	Toothfairy	68	67	508	261	34709	23603	599	1669	832	2444
7	1	Sequel Bowling Bookworms	67½	67½	543	228	34279	23698	614	1680	859	2430
8	8	Bye Team	21	114	0	0	0	0	0	0	0	0

\*\*\* Although not shown, standings are determined by points only for the current split

### Review of Last Week's Bowling.....

Lanes	Team Name	HDCP	HDCP	HDCP	HDCP	Last Wk		Team Name	HDCP	HDCP	HDCP	HDCP	Last Wk
		-1-	-2-	-3-	Total	WON			-1-	-2-	-3-	Total	WON
1-2	Turner Body Shop #1	775	860	750	2385	5½	<--->	Turner Body Shop of	696	860	775	2331	3½
3-4	Dames of the Game	694	846	809	2349	5	<--->	Hilton's Pin Buster	808	806	801	2415	4
5-6	Sequel Bowling Book	765	702	771	2238	4	<--->	Versatile Roofing	749	754	822	2325	5
7-8	Toothfairy	822	825	797	2444	9	<--->	Bye Team	0	0	0	0	0

### Lane Assignments

	1-2	3-4	5-6	7-8
Wk16 12/16	4- 3	2- 1	8- 7	6- 5
Wk17 12/23	👉 Christmas No bowling			
Wk17 12/30	7- 5	8- 6	3- 1	4- 2
Wk18 01/06	8- 1	4- 5	6- 2	3- 7

### Last Week's Top Scores

Team Scratch Game		Team Scratch Series		Team Handicap Game		Team Handicap Series	
681	Turner Body Shop #1	1848	Turner Body Shop #1	860	Turner Body Shop #1	2444	Toothfairy
629	Turner Body Shop of Holdr	1674	Hilton's Pin Buster	860	Turner Body Shop of Holdr	2415	Hilton's Pin Buster
609	Dames of the Game	1649	Toothfairy	846	Dames of the Game	2385	Turner Body Shop
561	Hilton's Pin Buster	1638	Dames of the Game	825	Toothfairy	2349	Dames of the Gam
560	Toothfairy	1638	Turner Body Shop of Holdr	822	Versatile Roofing	2331	Turner Body Shop o
543	Sequel Bowling Bookworm	1554	Sequel Bowling Bookworm	808	Hilton's Pin Buster	2325	Versatile Roofing
476	Versatile Roofing	1287	Versatile Roofing	771	Sequel Bowling Bookworm	2238	Sequel Bowling Bo
Scratch Game		Scratch Series		Handicap Game		Handicap Series	
207	Rebecca McPherson	542	Rebecca McPherson	242	Etha Griffin	654	Sue Janssen
189	Wanda Westphalen	523	Nicole Mulroney	235	Ashley Hancock	648	Etha Griffin
184	Nicole Mulroney	487	Jacquie Slagle	231	Jacquie Slagle	642	Bev Walton
184	Ashley Hancock	481	Ashley Hancock	230	Angie Hauserman	634	Ashley Hancock
183	Jacquie Slagle	468	Deb Hatcher	229	Bev Walton	631	Jacquie Slagle
181	Deb Hatcher	465	Sue Janssen	228	Wanda Westphalen	631	Sandy Hauver
180	Barb Farber	464	Barb Farber	227	Sandy Hauver	617	Linda Johnson
172	Etha Griffin	464	Wanda Westphalen	226	Sue Janssen	610	Nicole Mulroney
171	Kira Hancock	462	Bev Walton	225	Kira Hancock	603	Trish Hancock
169	Bev Walton	438	Etha Griffin	224	Linda Johnson	596	Angie Hauserman
				224	Sheri Londer		

### Season High Scores

Team Scratch Game		Team Scratch Series		Team Handicap Game		Team Handicap Series	
697	Hilton's Pin Buster	1900	Turner Body Shop #1	900	Hilton's Pin Buster	2533	Dames of the Gam
681	Turner Body Shop #1	1896	Hilton's Pin Buster	892	Dames of the Game	2505	Hilton's Pin Buster
661	Dames of the Game	1840	Dames of the Game	883	Turner Body Shop #1	2470	Turner Body Shop
648	Turner Body Shop of Holdr	1785	Turner Body Shop of Holdr	870	Turner Body Shop of Holdr	2468	Turner Body Shop o
614	Sequel Bowling Bookworm	1680	Sequel Bowling Bookworm	866	Versatile Roofing	2466	Versatile Roofing
599	Toothfairy	1669	Toothfairy	859	Sequel Bowling Bookworm	2444	Toothfairy
557	Versatile Roofing	1539	Versatile Roofing	832	Toothfairy	2430	Sequel Bowling Bo
Scratch Game		Scratch Series		Handicap Game		Handicap Series	
259	Rebecca McPherson	692	Rebecca McPherson	281	Kira Hancock	746	Rebecca McPherson
223	Allie Moore	621	Allie Moore	277	Rebecca McPherson	698	Michelle Shultheis
219	Kira Hancock	561	Wanda Westphalen	266	Michelle Shultheis	693	Wanda Westphalen
216	Nicole Mulroney	552	Nicole Mulroney	259	Barb Farber	681	Allie Moore
213	Barb Farber	536	Deb Hatcher	258	Trish Hancock	675	Eileen McLaughlin
213	Wanda Westphalen	524	Michelle Shultheis	257	Wanda Westphalen	674	Lindsay McLaughlin
208	Michelle Shultheis	502	Jacquie Slagle	256	Jacqui Moore	674	Gala Sesna
205	Deb Hatcher	495	Eileen McLaughlin	256	Gala Sesna	672	Kira Hancock
198	Jacquie Slagle	494	Denae Washington	254	Angie Hauserman	670	Trish Hancock
190	Eileen McLaughlin	492	Barb Farber	253	Lindsay McLaughlin	667	Jacquie Slagle
190	Jacqui Moore			253	Jacquie Slagle		
190	Cindy Gibbons						

### Team Rosters

#### 1 - Sequel Bowling Bookworms

Name	Avg	HDCP	Pins	Gms	Points Won	High Game	High Sers	HDCP Game	HDCP Sers	Most Improved Avg +/-	To Raise Avg +1	To Drop Avg -1	Weekly Over Avg Series Avg +/-
Peg Hickman	127	65	1527	12	3.0	142	399	205	588		393	377	
Jacqui Moore	128	64	4253	33	10.0	190	448	256	646	126 +2.88	391	354	361 - 387=-26
Angie C. Hauserman	129	63	5429	42	9.0	187	457	254	658	127 +2.26	421	375	404 - 384=20
Deb L. Hatcher	159	36	6702	42	15.5	205	536	244	653	154 +5.57	498	452	468 - 477=-9

#### 2 - Toothfairy

Name	Avg	HDCP	Pins	Gms	Points Won	High Game	High Sers	HDCP Game	HDCP Sers	Most Improved Avg +/-	To Raise Avg +1	To Drop Avg -1	Weekly Over Avg Series Avg +/-
Sheri J. Londer	114	77	3080	27	7.0	146	372	224	603	114 +0.07	370	339	360 - 339=21
Etha J. Griffin	125	67	2636	21	6.0	172	438	242	648	125 +0.52	388	363	438 - 366=72
Bev Walton	134	59	5262	39	9.0	169	464	229	650	129 +5.92	408	365	462 - 399=63
Eileen M. McLaughlin	135	58	5290	39	6.0	190	495	250	675	133 +2.64	422	379	389 - 408=-19
Cindy Gibbons	143	51	4719	33	7.0	190	485	243	644	144 -1.00	465	428	

#### 3 - Hilton's Pin Buster

Name	Avg	HDCP	Pins	Gms	Points Won	High Game	High Sers	HDCP Game	HDCP Sers	Most Improved Avg +/-	To Raise Avg +1	To Drop Avg -1	Weekly Over Avg Series Avg +/-
Bambi L. Jones	123	69	1849	15	3.0	156	431	229	650		383	364	
Linda K. Johnson	123	69	5552	45	11.0	154	407	224	617	120 +3.38	400	351	407 - 366=41
Tammie J. Runions	125	67	1506	12	1.0	166	391	226	577		384	368	376 - 375=1
Carrie J. Ludeke	125	67	1133	9	2.0	146	383	217	596		379	366	
Sue A. Janssen	132	61	4765	36	7.0	179	472	243	664	133 -0.64	422	382	465 - 390=75
Denae L. Washington	147	47	4861	33	8.0	181	494	240	658	141 +6.30	467	430	

#### 4 - Turner Body Shop #1

Name	Avg	HDCP	Pins	Gms	Points Won	High Game	High Sers	HDCP Game	HDCP Sers	Most Improved Avg +/-	To Raise Avg +1	To Drop Avg -1	Weekly Over Avg Series Avg +/-
Karen L. Lopez	85	103	1531	18	4.0	120	324	228	648		275	253	
Beth A. Carr	128	64	5026	39	8.0	158	431	224	629	129 -0.13	392	349	374 - 387=-13
Jacquie L. Slagle	147	47	5750	39	8.0	198	502	253	667	142 +5.44	466	423	487 - 438=49
Wanda M. Westphalen	155	40	6548	42	15.0	213	561	257	693	151 +4.90	472	426	464 - 468=-4
Nicole J. Mulroney	167	29	6548	39	11.0	216	552	245	636	170 -2.10	508	465	523 - 501=22

**5 - Dames of the Game**

Name	Avg	HDCP	Pins	Gms	Points	High	High	HDCP	HDCP	Most Improved		To Raise	To Drop	Weekly Over Avg
					Won	Game	Sers	Game	Sers	Avg	+/-	Avg +1	Avg -1	Series Avg +/-
Carol J. Fenstermacher	109	81	4283	39	8.0	156	373	237	622	108	+1.82	337	294	342 - 327=15
Helen M. Bockerman	119	72	3590	30	6.0	164	407	239	632	116	+3.67	370	336	376 - 357=19
DeAnn M. Brickner	122	70	4781	39	7.0	170	443	243	662	125	-2.41	385	342	378 - 366=12
Michelle Shultheis	140	54	3370	24	6.0	208	524	266	698	142	-1.58	437	409	
Rebecca L. McPherson	184	14	6638	36	17.0	259	692	277	746	181	+3.39	577	537	542 - 552=-10

**6 - Turner Body Shop of Holdrege**

Name	Avg	HDCP	Pins	Gms	Points	High	High	HDCP	HDCP	Most Improved		To Raise	To Drop	Weekly Over Avg
					Won	Game	Sers	Game	Sers	Avg	+/-	Avg +1	Avg -1	Series Avg +/-
Trish R. Hancock	122	70	4058	33	8.0	184	448	258	670	121	+1.97	370	333	393 - 366=27
Beckie S. King	135	58	4893	36	3.0	181	479	227	650	136	-0.08	411	371	363 - 411=-48
Lindsay L. McLaughlin	139	54	5025	36	6.0	182	485	253	674	141	-1.42	435	395	
Kira L. Hancock	140	54	5042	36	11.0	219	486	281	672	140	+0.06	457	417	401 - 420=-19
Ashley K. Hancock	144	50	5208	36	11.5	184	481	235	640	137	+7.67	447	407	481 - 429=52

**7 - Versatile Roofing**

Name	Avg	HDCP	Pins	Gms	Points	High	High	HDCP	HDCP	Most Improved		To Raise	To Drop	Weekly Over Avg
					Won	Game	Sers	Game	Sers	Avg	+/-	Avg +1	Avg -1	Series Avg +/-
Sandy L. Hauver	72	115	2989	41	5.0	111	283	227	631	74	-1.10	223	178	283 - 213=70
Sue M. Isaac	80	108	970	12	1.0	97	261	206	588			245	229	261 - 234=27
Gala Z. Sesna	113	78	4430	39	7.0	175	431	256	674	107	+6.59	358	315	
Emilie E. Alonso	124	68	2979	24	6.0	156	410	232	621	126	-1.88	396	368	
Barb Farber	152	43	6872	45	19.0	213	492	259	630	151	+1.71	472	423	464 - 456=8

**8 - Bye Team**

**Temporary Substitutes**

Name	Avg	HDCP	Pins	Gms	Points	High	High	HDCP	HDCP	Most Improved		To Raise	To Drop	Weekly Over Avg
					Won	Game	Sers	Game	Sers	Avg	+/-	Avg +1	Avg -1	Series Avg +/-
Allie E. Moore	183	15	2572	14	10.0	223	621	243	681			556	538	
Susan M. Ohlrich	130	63	392	3	1.0	143	392	206	581			394	387	
Amanda A. Sparr	120	72	1809	15	1.0	167	445	231	637			369	350	
Chris M. Stockton	130	63	780	6	1.0	152	410	221	617			399	389	

**Individual High Averages**

184.39	Rebecca McPherson	167.90	Nicole Mulroney	159.57	Deb Hatcher	155.90	Wanda Westphalen
152.71	Barb Farber	147.44	Jacque Slagle	147.30	Denae Washington	144.67	Ashley Hancock
143.00	Cindy Gibbons	140.42	Michelle Shultheis	140.06	Kira Hancock	139.58	Lindsay McLaughlin

**High Individual Match Points**

19	Barb Farber	17	Rebecca McPherson	15.5	Deb Hatcher	15	Wanda Westphalen
11.5	Ashley Hancock	11	Nicole Mulroney	11	Linda Johnson	11	Kira Hancock
10	Allie Moore	10	Jacqui Moore	9	Angie Hauserman	9	Bev Walton

**Most Improved Average**

137 to 144.67 = +7.67	Ashley Hancock	107 to 113.59 = +6.59	Gala Sesna	141 to 147.30 = +6.30	Denae Washington
129 to 134.92 = +5.92	Bev Walton	154 to 159.57 = +5.57	Deb Hatcher	142 to 147.44 = +5.44	Jacque Slagle

**Most Un-Improved Averages**

125 to 122.59 = -2.41	DeAnn Brickner	170 to 167.90 = -2.10	Nicole Mulroney	126 to 124.13 = -1.88	Emilie Alonso
142 to 140.42 = -1.58	Michelle Shultheis	141 to 139.58 = -1.42	Lindsay McLaughlin	74 to 72.90 = -1.10	Sandy Hauver

# Pinette 2022-23

## Big Apple Fun Center

### Reprint of Scores -- Week 15

#### Lane 1 4 - Turner Body Shop #1 Week 15 12/9/2022

Name	Old	Old					HDCP
	Avg	HDCP	-1-	-2-	-3-	Total	Total
Beth A. Carr	129	63	106	149	119	374	563
Jacque L. Slagle	146	48	160	183	144	487	631
Wanda M. Westphalen	156	39	151	189	124	464	581
Nicole J. Mulrone	167	29	179	160	184	523	610
			====	====	====	====	====
Scratch Total			596	681	571	1848	1848
Handicap			179	179	179		537
Total			775	860	750	1848	2385
Team Points Won			1.0	0.5	0.0	2.5	2.5
Match Points Won			0.0	0.0	0.0	3.0	3.0
Total Points Won			1.0	0.5	0.0	5.5	5.5

#### Lane 2 6 - Turner Body Shop of Holdrege Week 15 12/9/2022

Name	Old	Old					HDCP
	Avg	HDCP	-1-	-2-	-3-	Total	Total
Trish R. Hancock	122	70	117	148	128	393	603
Beckie S. King	137	56	109	142	112	363	531
Kira L. Hancock	140	54	110	171	120	401	563
Ashley K. Hancock	143	51	129	168	184	481	634
			====	====	====	====	====
Scratch Total			465	629	544	1638	1638
Handicap			231	231	231		693
Total			696	860	775	1638	2331
Team Points Won			0.0	0.5	1.0	1.5	1.5
Match Points Won			0.0	0.0	0.0	2.0	2.0
Total Points Won			0.0	0.5	1.0	3.5	3.5

#### Lane 3 5 - Dames of the Game Week 15 12/9/2022

Name	Old	Old					HDCP
	Avg	HDCP	-1-	-2-	-3-	Total	Total
Carol J. Fenstermacher	109	81	72	128	142	342	585
Helen M. Bockerman	119	72	110	124	142	376	592
DeAnn M. Brickner	122	70	101	150	127	378	588
Rebecca L. McPherson	184	14	174	207	161	542	584
			====	====	====	====	====
Scratch Total			457	609	572	1638	1638
Handicap			237	237	237		711
Total			694	846	809	1638	2349
Team Points Won			0.0	1.0	1.0	2.0	2.0
Match Points Won			0.0	0.0	0.0	3.0	3.0
Total Points Won			0.0	1.0	1.0	5.0	5.0

#### Lane 4 3 - Hilton's Pin Buster Week 15 12/9/2022

Name	Old	Old					HDCP
	Avg	HDCP	-1-	-2-	-3-	Total	Total
Linda K. Johnson	122	70	127	126	154	407	617
Tammie J. Runions	bk125	67	144	105	127	376	577
Sue A. Janssen	130	63	156	163	146	465	654
Denae L. Washington	147	47	134	165	a127	426	567
			====	====	====	====	====
Scratch Total			561	559	554	1674	1674
Handicap			247	247	247		741
Total			808	806	801	1674	2415
Team Points Won			1.0	0.0	0.0	2.0	2.0
Match Points Won			0.0	0.0	0.0	2.0	2.0
Total Points Won			1.0	0.0	0.0	4.0	4.0

#### Lane 5 1 - Sequel Bowling Bookworms Week 15 12/9/2022

Name	Old	Old					HDCP
	Avg	HDCP	-1-	-2-	-3-	Total	Total
Peg Hickman	127	65	a107	a107	a107	321	516
Angie C. Hauserman	128	64	166	115	123	404	596
Jacqui Moore	129	63	113	116	132	361	550
Deb L. Hatcher	159	36	151	136	181	468	576
			====	====	====	====	====
Scratch Total			537	474	543	1554	1554
Handicap			228	228	228		684
Total			765	702	771	1554	2238
Team Points Won			1.0	0.0	0.0	1.0	1.0
Match Points Won			0.0	0.0	0.0	3.0	3.0
Total Points Won			1.0	0.0	0.0	4.0	4.0

#### Lane 6 7 - Versatile Roofing Week 15 12/9/2022

Name	Old	Old					HDCP
	Avg	HDCP	-1-	-2-	-3-	Total	Total
Sandy L. Hauver	71	116	78	94	111	283	631
Sue M. Isaac	78	109	97	72	92	261	588
Gala Z. Sesna	113	78	a93	a93	a93	279	513
Barb Farber	152	43	135	149	180	464	593
			====	====	====	====	====
Scratch Total			403	408	476	1287	1287
Handicap			346	346	346		1038
Total			749	754	822	1287	2325
Team Points Won			0.0	1.0	1.0	3.0	3.0
Match Points Won			0.0	0.0	0.0	2.0	2.0
Total Points Won			0.0	1.0	1.0	5.0	5.0

#### Lane 7 2 - Toothfairy Week 15 12/9/2022

Name	Old	Old					HDCP
	Avg	HDCP	-1-	-2-	-3-	Total	Total
Sheri J. Londer	113	78	111	146	103	360	594
Etha J. Griffin	bk122	70	172	112	154	438	648
Bev Walton	133	60	169	156	137	462	642
Eileen M. McLaughlin	136	57	105	146	138	389	560
			====	====	====	====	====
Scratch Total			557	560	532	1649	1649
Handicap			265	265	265		795
Total			822	825	797	1649	2444
Team Points Won			1.0	1.0	1.0	4.0	4.0
Match Points Won			0.0	0.0	0.0	5.0	5.0
Total Points Won			1.0	1.0	1.0	9.0	9.0

#### Lane 8 8 - Bye Team Week 15 12/9/2022

Name	Old	Old					HDCP
	Avg	HDCP	-1-	-2-	-3-	Total	Total
No one bowled							

# Pinette 2022-23

## Big Apple Fun Center

### Match Points Won (This Week) -- Week 15

#### Lane 1 4 - Turner Body Shop #1 Week 15 12/9/2022

Name	Last Wk Won	Last Wk Lost	HDCP -1-	HDCP -2-	HDCP -3-	HDCP Total
Beth A. Carr		1.0	169	212	182	563
Jacque L. Slagle	1.0		208	231	192	631
Wanda M. Westphalen	2.0		190	228	163	581
Nicole J. Mulrone		1.0	208	189	213	610
			=====	=====	=====	=====
Scratch Total			596	681	571	1848
Handicap			179	179	179	537
Total			775	860	750	2385
Team Points Won			1.0	0.5	0.0	2.5
Match Points Won			0.0	0.0	0.0	3.0
Total Points Won			1.0	0.5	0.0	5.5

#### Lane 2 6 - Turner Body Shop of Holdrege Week 15 12/9/2022

Name	Last Wk Won	Last Wk Lost	HDCP -1-	HDCP -2-	HDCP -3-	HDCP Total
Trish R. Hancock		1.0	187	218	198	603
Beckie S. King		1.0	165	198	168	531
Kira L. Hancock		1.0	164	225	174	563
Ashley K. Hancock		1.0	180	219	235	634
			=====	=====	=====	=====
Scratch Total			465	629	544	1638
Handicap			231	231	231	693
Total			696	860	775	2331
Team Points Won			0.0	0.5	1.0	1.5
Match Points Won			0.0	0.0	0.0	2.0
Total Points Won			0.0	0.5	1.0	3.5

#### Lane 3 5 - Dames of the Game Week 15 12/9/2022

Name	Last Wk Won	Last Wk Lost	HDCP -1-	HDCP -2-	HDCP -3-	HDCP Total
Carol J. Fenstermacher		1.0	153	209	223	585
Helen M. Bockerman	1.0		182	196	214	592
DeAnn M. Brickner		1.0	171	220	197	588
Rebecca L. McPherson	2.0		188	221	175	584
			=====	=====	=====	=====
Scratch Total			457	609	572	1638
Handicap			237	237	237	711
Total			694	846	809	2349
Team Points Won			0.0	1.0	1.0	2.0
Match Points Won			0.0	0.0	0.0	3.0
Total Points Won			0.0	1.0	1.0	5.0

#### Lane 4 3 - Hilton's Pin Buster Week 15 12/9/2022

Name	Last Wk Won	Last Wk Lost	HDCP -1-	HDCP -2-	HDCP -3-	HDCP Total
Linda K. Johnson		1.0	197	196	224	617
Tammie J. Runions		1.0	211	172	194	577
Sue A. Janssen		1.0	219	226	209	654
Denae L. Washington		1.0	181	212	a174	567
			=====	=====	=====	=====
Scratch Total			561	559	554	1674
Handicap			247	247	247	741
Total			808	806	801	2415
Team Points Won			1.0	0.0	0.0	2.0
Match Points Won			0.0	0.0	0.0	2.0
Total Points Won			1.0	0.0	0.0	4.0

#### Lane 5 1 - Sequel Bowling Bookworms Week 15 12/9/2022

Name	Last Wk Won	Last Wk Lost	HDCP -1-	HDCP -2-	HDCP -3-	HDCP Total
Peg Hickman		1.0	a172	a172	a172	516
Angie C. Hauserman	1.0		230	179	187	596
Jacqui Moore	1.0		176	179	195	550
Deb L. Hatcher	1.0	1.0	187	172	217	576
			=====	=====	=====	=====
Scratch Total			537	474	543	1554
Handicap			228	228	228	684
Total			765	702	771	2238
Team Points Won			1.0	0.0	0.0	1.0
Match Points Won			0.0	0.0	0.0	3.0
Total Points Won			1.0	0.0	0.0	4.0

#### Lane 6 7 - Versatile Roofing Week 15 12/9/2022

Name	Last Wk Won	Last Wk Lost	HDCP -1-	HDCP -2-	HDCP -3-	HDCP Total
Sandy L. Hauver		1.0	194	210	227	631
Sue M. Isaac		1.0	206	181	201	588
Gala Z. Sesna		1.0	a171	a171	a171	513
Barb Farber		1.0	178	192	223	593
			=====	=====	=====	=====
Scratch Total			403	408	476	1287
Handicap			346	346	346	1038
Total			749	754	822	2325
Team Points Won			0.0	1.0	1.0	3.0
Match Points Won			0.0	0.0	0.0	2.0
Total Points Won			0.0	1.0	1.0	5.0

#### Lane 7 2 - Toothfairy Week 15 12/9/2022

Name	Last Wk Won	Last Wk Lost	HDCP -1-	HDCP -2-	HDCP -3-	HDCP Total
Sheri J. Londer	1.0		189	224	181	594
Etha J. Griffin	2.0		242	182	224	648
Bev Walton	1.0		229	216	197	642
Eileen M. McLaughlin	1.0		162	203	195	560
			=====	=====	=====	=====
Scratch Total			557	560	532	1649
Handicap			265	265	265	795
Total			822	825	797	2444
Team Points Won			1.0	1.0	1.0	4.0
Match Points Won			0.0	0.0	0.0	5.0
Total Points Won			1.0	1.0	1.0	9.0

#### Lane 8 8 - Bye Team Week 15 12/9/2022

Name	Last Wk Won	Last Wk Lost	HDCP -1-	HDCP -2-	HDCP -3-	HDCP Total
No one bowled						

# Pinette 2022-23

## Big Apple Fun Center

\* Bowlers listed must have a minimum of 1 games.

### Match Points Won (Total for Year)

Name	Avg	Gms	Points		%Won	Name	Avg	Gms	Points		%Won
			Won	Lost					Won	Lost	
Barb Farber	152	45	19.0	3.0	86.36%	Gala Z. Sesna	113	39	7.0	7.0	50.00%
Rebecca L. McPherson	184	36	17.0	5.0	77.27%	Sheri J. Londer	114	27	7.0	2.0	77.78%
Deb L. Hatcher	159	42	15.5	7.5	67.39%	Michelle Shultheis	140	24	6.0	3.0	66.67%
Wanda M. Westphalen	155	42	15.0	4.0	78.95%	Emilie E. Alonso	124	24	6.0	2.0	75.00%
Ashley K. Hancock	144	36	11.5	2.5	82.14%	Lindsay L. McLaughlin	139	36	6.0	7.0	46.15%
Nicole J. Mulrone	167	39	11.0	9.0	55.00%	Etha J. Griffin	125	21	6.0	2.0	75.00%
Linda K. Johnson	123	45	11.0	5.0	68.75%	Eileen M. McLaughlin	135	39	6.0	7.0	46.15%
Kira L. Hancock	140	36	11.0	4.0	73.33%	Helen M. Bockerman	119	30	6.0	4.0	60.00%
Allie E. Moore	183	14	10.0		100.00%	Sandy L. Hauver	72	41	5.0	10.0	33.33%
Jacqui Moore	128	33	10.0	6.0	62.50%	Karen L. Lopez	85	18	4.0	2.0	66.67%
Angie C. Hauserman	129	42	9.0	7.0	56.25%	Bambi L. Jones	123	15	3.0	3.0	50.00%
Bev Walton	134	39	9.0	6.0	60.00%	Peg Hickman	127	12	3.0	8.0	27.27%
Beth A. Carr	128	39	8.0	5.0	61.54%	Beckie S. King	135	36	3.0	9.0	25.00%
Denae L. Washington	147	33	8.0	6.0	57.14%	Carrie J. Ludeke	125	9	2.0	1.0	66.67%
Carol J. Fenstermacher	109	39	8.0	5.0	61.54%	Sue M. Isaac	80	12	1.0	6.0	14.29%
Jacque L. Slagle	147	39	8.0	6.0	57.14%	Amanda A. Sparr	120	15	1.0	4.0	20.00%
Trish R. Hancock	122	33	8.0	4.0	66.67%	Tammie J. Runions	125	12	1.0	3.0	25.00%
Sue A. Janssen	132	36	7.0	8.0	46.67%	Susan M. Ohlrich	130	3	1.0		100.00%
Cindy Gibbons	143	33	7.0	7.0	50.00%	Chris M. Stockton	130	6	1.0	1.0	50.00%
DeAnn M. Brickner	122	39	7.0	6.0	53.85%						

# Pinette 2022-23

## Big Apple Fun Center

\* Bowlers listed must have a minimum of 1 games.

### Change in Average

Name	-----Old-----		Old					---Average Change---			Weekly Over Avg
	Pins	Games	Avg	-1-	-2-	-3-	Total	New	Old	---> +/-	Series Avg +/-
Emilie E. Alonso	2979	24	124				0	124.13	- 124.13	= 0.00	
Helen M. Bockerman	3214	27	119	110	<b>124</b>	<b>142</b>	376	119.67	- 119.04	= 0.63	376 - 357=19
DeAnn M. Brickner	4403	36	122	101	150	127	378	122.59	- 122.31	= 0.28	378 - 366=12
Beth A. Carr	4652	36	129	106	149	119	374	128.87	- 129.22	= -0.35	374 - 387=-13
Barb Farber	6408	42	152	135	<b>149</b>	<b>180</b>	464	152.71	- 152.57	= 0.14	464 - 456=8
Carol J. Fenstermacher	3941	36	109	72	<b>128</b>	142	342	109.82	- 109.47	= 0.35	342 - 327=15
Cindy Gibbons	4719	33	143				0	143.00	- 143.00	= 0.00	
Etha J. Griffin	2198	18	bk122	<b>172</b>	<b>112</b>	<b>154</b>	438	125.52	- 122.11	= 3.41	438 - 366=72
Ashley K. Hancock	4727	33	143	129	<b>168</b>	<b>184</b>	481	144.67	- 143.24	= 1.42	481 - 429=52
Kira L. Hancock	4641	33	140	110	171	<b>120</b>	401	140.06	- 140.64	= -0.58	401 - 420=-19
Trish R. Hancock	3665	30	122	<b>117</b>	<b>148</b>	<b>128</b>	393	122.97	- 122.17	= 0.80	393 - 366=27
Deb L. Hatcher	6234	39	159	<b>151</b>	136	181	468	159.57	- 159.85	= -0.27	468 - 477=-9
Angie C. Hauserman	5025	39	128	<b>166</b>	115	123	404	129.26	- 128.85	= 0.42	404 - 384=20
Sandy L. Hauver	2706	38	71	<b>78</b>	<b>94</b>	<b>111</b>	283	72.90	- 71.21	= 1.69	283 - 213=70
Peg Hickman	1527	12	127	a107	a107	a107	321	127.25	- 127.25	= 0.00	
Sue M. Isaac	709	9	78	97	<b>72</b>	<b>92</b>	261	80.83	- 78.78	= 2.06	261 - 234=27
Sue A. Janssen	4300	33	130	<b>156</b>	<b>163</b>	<b>146</b>	465	132.36	- 130.30	= 2.06	465 - 390=75
Linda K. Johnson	5145	42	122	<b>127</b>	126	<b>154</b>	407	123.38	- 122.50	= 0.88	407 - 366=41
Bambi L. Jones	1849	15	123				0	123.27	- 123.27	= 0.00	
Beckie S. King	4530	33	137	109	142	112	363	135.92	- 137.27	= -1.36	363 - 411=-48
Sheri J. Londer	2720	24	113	<b>111</b>	<b>146</b>	<b>103</b>	360	114.07	- 113.33	= 0.74	360 - 339=21
Karen L. Lopez	1531	18	85				0	85.06	- 85.06	= 0.00	
Carrie J. Ludeke	1133	9	bk125				0	125.89	- 125.89	= 0.00	
Eileen M. McLaughlin	4901	36	136	105	<b>146</b>	<b>138</b>	389	135.64	- 136.14	= -0.50	389 - 408=-19
Lindsay L. McLaughlin	5025	36	139				0	139.58	- 139.58	= 0.00	
Rebecca L. McPherson	6096	33	184	<b>174</b>	<b>207</b>	<b>161</b>	542	184.39	- 184.73	= -0.34	542 - 552=-10
Allie E. Moore	2572	14	bk183				0	183.71	- 183.71	= 0.00	
Jacqui Moore	3892	30	129	<b>113</b>	<b>116</b>	<b>132</b>	361	128.88	- 129.73	= -0.85	361 - 387=-26
Nicole J. Mulrone	6025	36	167	<b>179</b>	160	184	523	167.90	- 167.36	= 0.54	523 - 501=22
Susan M. Ohlrich	392	3	130				0	130.67	- 130.67	= 0.00	
Tammie J. Runions	1130	9	bk125	<b>144</b>	105	127	376	125.50	- 125.56	= -0.06	376 - 375=1
Gala Z. Sesna	4430	39	113	a93	a93	a93	279	113.59	- 113.59	= 0.00	
Michelle Shultheis	3370	24	140				0	140.42	- 140.42	= 0.00	
Jacquie L. Slagle	5263	36	146	<b>160</b>	<b>183</b>	<b>144</b>	487	147.44	- 146.19	= 1.24	487 - 438=49
Amanda A. Sparr	1809	15	120				0	120.60	- 120.60	= 0.00	
Chris M. Stockton	780	6	130				0	130.00	- 130.00	= 0.00	
Bev Walton	4800	36	133	<b>169</b>	<b>156</b>	<b>137</b>	462	134.92	- 133.33	= 1.59	462 - 399=63

**Pinette 2022-23**

<u>Name</u>	<u>-----Old-----</u>		<u>Old</u>				<u>Total</u>	<u>---Average Change---</u>			<u>Weekly Over Avg</u>	
	<u>Pins</u>	<u>Games</u>	<u>Avg</u>	<u>-1-</u>	<u>-2-</u>	<u>-3-</u>		<u>New - Old</u>	<u>---&gt; +/-</u>	<u>Series Avg +/-</u>		
Denae L. Washington	4562	31	147	134	165	a127	426	147.30	- 147.16	=	0.14	
Wanda M. Westphalen	6084	39	156	<b>151</b>	<b>189</b>	124	464	155.90	- 156.00	=	-0.10	464 - 468=-4



# Pinette 2022-23

## Big Apple Fun Center

\* Bowlers listed must have a minimum of 1 games.

### High Average Listing

	<u>Name</u>	<u>True Average</u>	<u>Pins</u>	<u>Gms</u>	<u>To Raise Avg +1</u>	<u>To Drop Avg -1</u>
1	Rebecca L. McPherson	184.39	6638	36	577	537
2	Allie E. Moore	183.71	2572	14	556	538
3	Nicole J. Mulroney	167.90	6548	39	508	465
4	Deb L. Hatcher	159.57	6702	42	498	452
5	Wanda M. Westphalen	155.90	6548	42	472	426
6	Barb Farber	152.71	6872	45	472	423
7	Jacque L. Slagle	147.44	5750	39	466	423
8	Denae L. Washington	147.30	4861	33	467	430
9	Ashley K. Hancock	144.67	5208	36	447	407
10	Cindy Gibbons	143.00	4719	33	465	428
11	Michelle Shultheis	140.42	3370	24	437	409
12	Kira L. Hancock	140.06	5042	36	457	417
13	Lindsay L. McLaughlin	139.58	5025	36	435	395
14	Beckie S. King	135.92	4893	36	411	371
15	Eileen M. McLaughlin	135.64	5290	39	422	379
16	Bev Walton	134.92	5262	39	408	365
17	Sue A. Janssen	132.36	4765	36	422	382
18	Susan M. Ohlrich	130.67	392	3	394	387
19	Chris M. Stockton	130.00	780	6	399	389
20	Angie C. Hauserman	129.26	5429	42	421	375
21	Jacqui Moore	128.88	4253	33	391	354
22	Beth A. Carr	128.87	5026	39	392	349
23	Peg Hickman	127.25	1527	12	393	377
24	Carrie J. Ludeke	125.89	1133	9	379	366
25	Etha J. Griffin	125.52	2636	21	388	363
26	Tammie J. Runions	125.50	1506	12	384	368
27	Emilie E. Alonso	124.13	2979	24	396	368
28	Linda K. Johnson	123.38	5552	45	400	351
29	Bambi L. Jones	123.27	1849	15	383	364
30	Trish R. Hancock	122.97	4058	33	370	333
31	DeAnn M. Brickner	122.59	4781	39	385	342
32	Amanda A. Sparr	120.60	1809	15	369	350
33	Helen M. Bockerman	119.67	3590	30	370	336
34	Sheri J. Londer	114.07	3080	27	370	339
35	Gala Z. Sesna	113.59	4430	39	358	315
36	Carol J. Fenstermacher	109.82	4283	39	337	294
37	Karen L. Lopez	85.06	1531	18	275	253
38	Sue M. Isaac	80.83	970	12	245	229
39	Sandy L. Hauver	72.90	2989	41	223	178

# Pinette 2022-23

## Big Apple Fun Center

\* Bowlers listed must have a minimum of 22 games.

Note: This report includes information through December 9 which is Week 15 of 31

### Most Improved Averages

Name	True Average	Most Improved Avg	+/-	Name	True Average	Most Improved Avg	+/-
Ashley K. Hancock	144.67	137	+7.67	Carol J. Fenstermacher	109.82	108	+1.82
Gala Z. Sesna	113.59	107	+6.59	Barb Farber	152.71	151	+1.71
Denae L. Washington	147.30	141	+6.30	Sheri J. Londer	114.07	114	+0.07
Bev Walton	134.92	129	+5.92	Kira L. Hancock	140.06	140	+0.06
Deb L. Hatcher	159.57	154	+5.57	Beckie S. King	135.92	136	-0.08
Jacque L. Slagle	147.44	142	+5.44	Beth A. Carr	128.87	129	-0.13
Wanda M. Westphalen	155.90	151	+4.90	Sue A. Janssen	132.36	133	-0.64
Helen M. Bockerman	119.67	116	+3.67	Cindy Gibbons	143.00	144	-1.00
Rebecca L. McPherson	184.39	181	+3.39	Sandy L. Hauver	72.90	74	-1.10
Linda K. Johnson	123.38	120	+3.38	Lindsay L. McLaughlin	139.58	141	-1.42
Jacqui Moore	128.88	126	+2.88	Michelle Shultheis	140.42	142	-1.58
Eileen M. McLaughlin	135.64	133	+2.64	Emilie E. Alonso	124.13	126	-1.88
Angie C. Hauserman	129.26	127	+2.26	Nicole J. Mulroney	167.90	170	-2.10
Trish R. Hancock	122.97	121	+1.97	DeAnn M. Brickner	122.59	125	-2.41

# Pinette 2022-23

## Big Apple Fun Center

\* Bowlers listed must have a minimum of 1 games.

### Most Pins Over Average

Name	-----Old-----		Old				Total	---Average Change---			Weekly Over Avg
	Pins	Games	Avg	-1-	-2-	-3-		New - Old	---> +/-	Series Avg +/-	
Sue A. Janssen	4300	33	130	<b>156</b>	<b>163</b>	<b>146</b>	465	132.36	- 130.30	= 2.06	465 - 390=75
Etha J. Griffin	2198	18	bk122	<b>172</b>	<b>112</b>	<b>154</b>	438	125.52	- 122.11	= 3.41	438 - 366=72
Sandy L. Hauver	2706	38	71	<b>78</b>	<b>94</b>	<b>111</b>	283	72.90	- 71.21	= 1.69	283 - 213=70
Bev Walton	4800	36	133	<b>169</b>	<b>156</b>	<b>137</b>	462	134.92	- 133.33	= 1.59	462 - 399=63
Ashley K. Hancock	4727	33	143	129	<b>168</b>	<b>184</b>	481	144.67	- 143.24	= 1.42	481 - 429=52
Jacquie L. Slagle	5263	36	146	<b>160</b>	<b>183</b>	<b>144</b>	487	147.44	- 146.19	= 1.24	487 - 438=49
Linda K. Johnson	5145	42	122	<b>127</b>	126	<b>154</b>	407	123.38	- 122.50	= 0.88	407 - 366=41
Sue M. Isaac	709	9	78	97	<b>72</b>	<b>92</b>	261	80.83	- 78.78	= 2.06	261 - 234=27
Trish R. Hancock	3665	30	122	<b>117</b>	<b>148</b>	<b>128</b>	393	122.97	- 122.17	= 0.80	393 - 366=27
Nicole J. Mulrone	6025	36	167	<b>179</b>	160	184	523	167.90	- 167.36	= 0.54	523 - 501=22
Sheri J. Londer	2720	24	113	<b>111</b>	<b>146</b>	<b>103</b>	360	114.07	- 113.33	= 0.74	360 - 339=21
Angie C. Hauserman	5025	39	128	<b>166</b>	115	123	404	129.26	- 128.85	= 0.42	404 - 384=20
Helen M. Bockerman	3214	27	119	110	<b>124</b>	<b>142</b>	376	119.67	- 119.04	= 0.63	376 - 357=19
Carol J. Fenstermacher	3941	36	109	72	<b>128</b>	142	342	109.82	- 109.47	= 0.35	342 - 327=15
DeAnn M. Brickner	4403	36	122	101	150	127	378	122.59	- 122.31	= 0.28	378 - 366=12
Barb Farber	6408	42	152	135	<b>149</b>	<b>180</b>	464	152.71	- 152.57	= 0.14	464 - 456=8
Tammie J. Runions	1130	9	bk125	<b>144</b>	105	127	376	125.50	- 125.56	= -0.06	376 - 375=1
Wanda M. Westphalen	6084	39	156	<b>151</b>	<b>189</b>	124	464	155.90	- 156.00	= -0.10	464 - 468=-4
Deb L. Hatcher	6234	39	159	<b>151</b>	136	181	468	159.57	- 159.85	= -0.27	468 - 477=-9
Rebecca L. McPherson	6096	33	184	<b>174</b>	<b>207</b>	<b>161</b>	542	184.39	- 184.73	= -0.34	542 - 552=-10
Beth A. Carr	4652	36	129	106	149	119	374	128.87	- 129.22	= -0.35	374 - 387=-13
Eileen M. McLaughlin	4901	36	136	105	<b>146</b>	<b>138</b>	389	135.64	- 136.14	= -0.50	389 - 408=-19
Kira L. Hancock	4641	33	140	110	171	<b>120</b>	401	140.06	- 140.64	= -0.58	401 - 420=-19
Jacqui Moore	3892	30	129	<b>113</b>	<b>116</b>	<b>132</b>	361	128.88	- 129.73	= -0.85	361 - 387=-26
Beckie S. King	4530	33	137	109	142	112	363	135.92	- 137.27	= -1.36	363 - 411=-48

# Pinette 2022-23

## Big Apple Fun Center

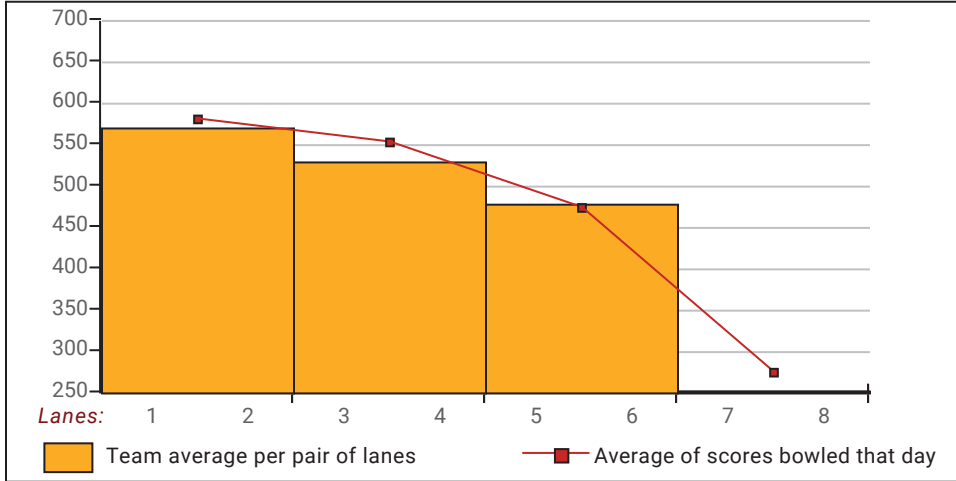
This report is for scores bowled December 9 which is Week 15 of 31

### This Week's Statistics: Lefties vs Righties

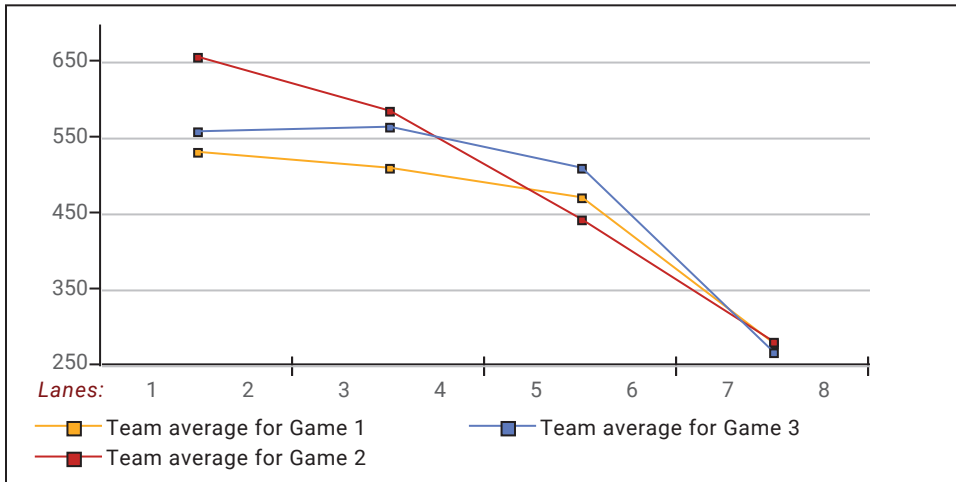
Unless designated left handed, bowlers are considered right handed.

	Over All	Right	Left
How many people bowled	26	26	0
Number of games bowled	77	77	0
Actual average of week's scores	137.16	137.16	0.00
How many games above average	45	45	0
How many games below average	32	32	0
Pins above/below average per game	5.86	5.86	0.00
How many people raised average	17	17	--
by this amount	1.08	1.08	0.00
How many people went down	9	9	--
by this amount	-0.49	-0.49	0.00
League average before bowling	131.89	131.89	0.00
League average after bowling	132.42	132.42	0.00
Change in league average	0.54	0.54	0.00
800s	--	--	--
775s	--	--	--
750s	--	--	--
725s	--	--	--
700s	--	--	--
675s	--	--	--
650s	--	--	--
625s	--	--	--
600s	--	--	--
575s	--	--	--
550s	--	--	--
525s	1	1	--
500s	1	1	--
475s	2	2	--
450s	5	5	--
425s	2	2	--
400s	3	3	--
below 400	12	12	--
300s	--	--	--
275s	--	--	--
250s	--	--	--
225s	--	--	--
200s	1	1	--
175s	7	7	--
150s	18	18	--
125s	24	24	--
100s	21	21	--
below 100	6	6	--

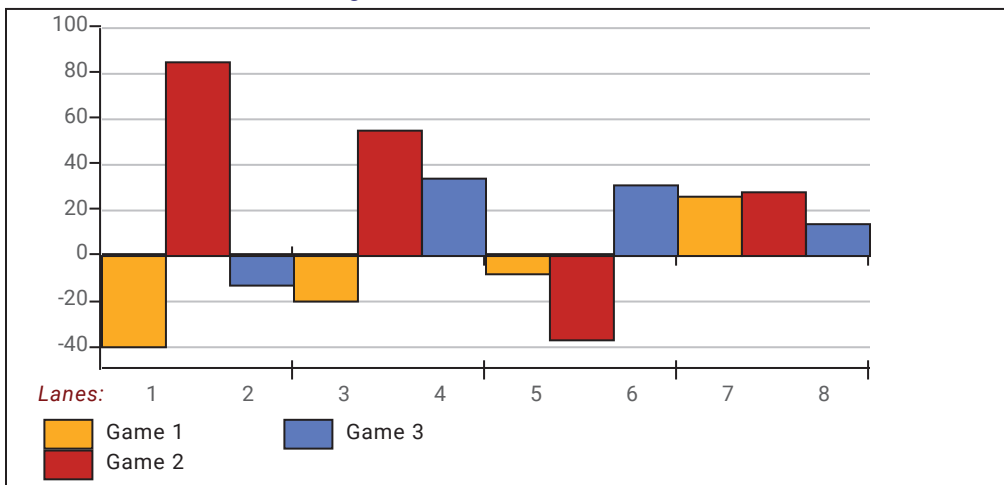
**Team Average vs Avg of Scores**



**Average of Scores for Each Game**

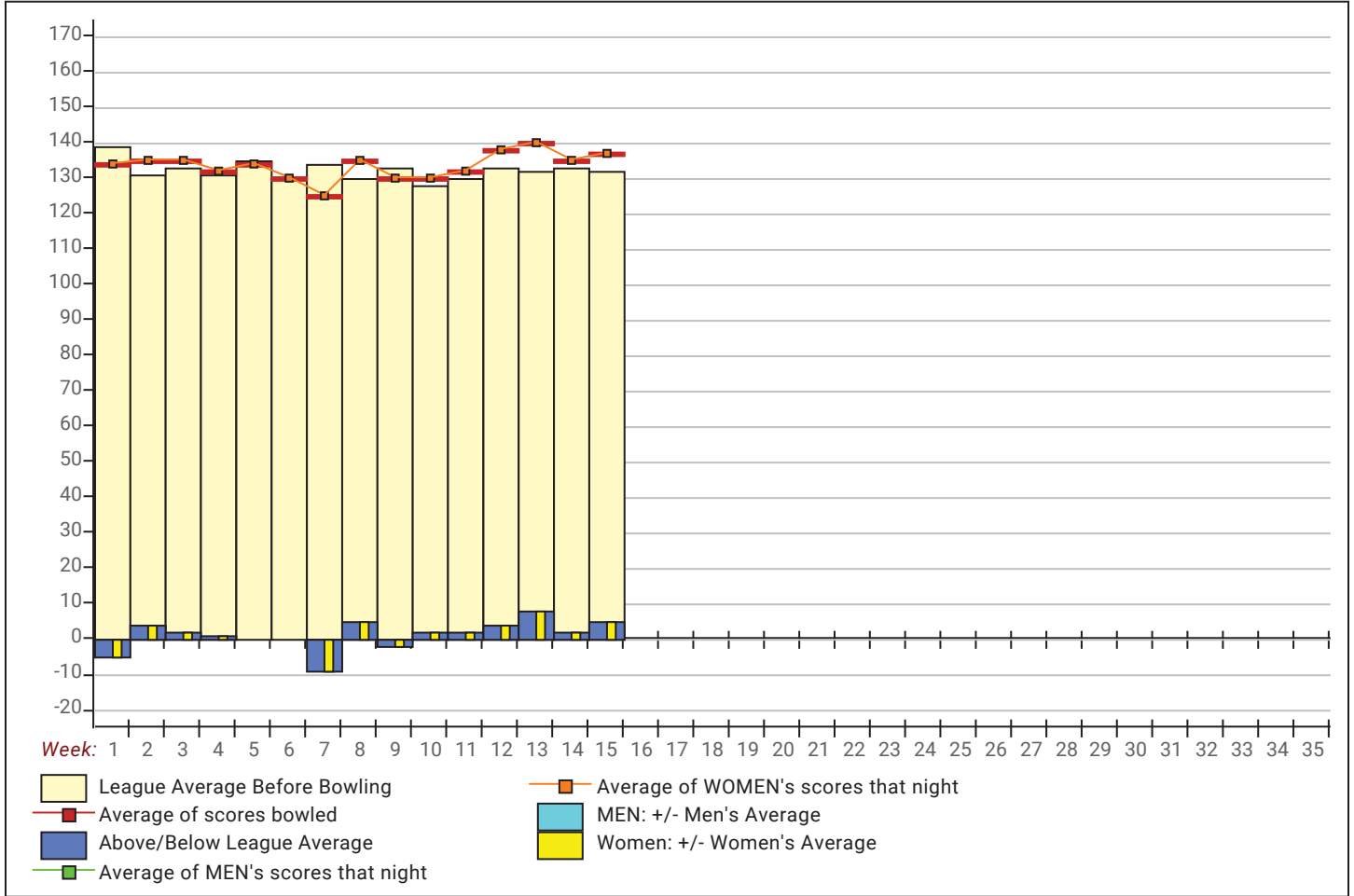


**Amount Over/Under Team Average**



This report is for scores bowled December 9 which is Week 15 of 31

**League Average Week-by-Week**



**League Average Statistics for Last Week**

	League	Right Hand	Left Hand
League Average Before Bowling	131.89	131.89	
Average of scores bowled that night	137.16	137.16	
New League Average After Bowling	132.42	132.42	
Change in League Average	.54	.54	
People Who Bowled Over Average	17	17	
People Who Bowled Under Average	9	9	
Average Amount of Series Over Avg	42.65	42.65	
Average Amount of Series Under Avg	-16.33	-16.33	
Difference Avg, NiteAvg	5.86	5.86	
Number of Bowlers	26	26	
Number of Games Bowled	77	77	
People Who Raised Their Average	17	17	
Raised By an Average of This Amount	1.08	1.08	
People Who Lowered Their Average	9	9	
Lowered By an Average of This Amou	-.49	-.49	
Number of Games Bowled Over Avera	45	45	
Number of Games Bowled Under Avera	32	32	

**Note: Averages are based only on people who bowled.**

**Pinette 2022-23**

**Big Apple Fun Center**

**Team Standings**

<u>Place</u>	<u>Team Name</u>	<u>Avg p/gm</u>	<u>Points Won</u>	<u>Points Lost</u>	<u>Year-To-Date WON</u>	<u>Y-T-D LOST</u>
1	Turner Body Shop #1	572	83½	51½	83½	51½
2	Turner Body Shop of Holdrege	549	78½	56½	78½	56½
3	Dames of the Game	535	77½	57½	77½	57½
4	Hilton's Pin Buster	533	75½	59½	75½	59½
5	Versatile Roofing	436	68½	66½	68½	66½
6	Toothfairy	524	68	67	68	67
7	Sequel Bowling Bookworms	526	67½	67½	67½	67½
8	Bye Team		21	114	21	114

**\*\*\* Although not shown, standings are determined by points only for the current split**

**Last Week's Top Scores**

<u>Scratch Game</u>		<u>Scratch Series</u>		<u>Handicap Game</u>		<u>Handicap Series</u>	
207	Rebecca McPherson	542	Rebecca McPherson	242	Etha Griffin	654	Sue Janssen
189	Wanda Westphalen	523	Nicole Mulroney	235	Ashley Hancock	648	Etha Griffin
184	Nicole Mulroney	487	Jacque Slagle	231	Jacque Slagle	642	Bev Walton
184	Ashley Hancock	481	Ashley Hancock	230	Angie Hauserman	634	Ashley Hancock
183	Jacque Slagle	468	Deb Hatcher	229	Bev Walton	631	Jacque Slagle
181	Deb Hatcher	465	Sue Janssen	228	Wanda Westphalen	631	Sandy Hauver
180	Barb Farber	464	Barb Farber	227	Sandy Hauver	617	Linda Johnson
172	Etha Griffin	464	Wanda Westphalen	226	Sue Janssen	610	Nicole Mulroney
171	Kira Hancock	462	Bev Walton	225	Kira Hancock	603	Trish Hancock
169	Bev Walton	438	Etha Griffin	224	Linda Johnson	596	Angie Hauserman
				224	Sheri Londer		

# Pinette 2022-23

Friday 6:30 pm

## Big Apple Fun Center

Lanes 1 - 8

President: Sue Janssen Vice President: Bev Walton  
Secretary/Treasurer: Rebecca McPherson

### Team Standings

Place	Lane	#	Team Name	Points	Points	Team	HDCP	Pins +	Scratch	High Scratch		High HDCP	
				Won	Lost	Avg		HDCP	Pins	10	30	10	30
1	1	5	Dames of the Game	87	48	465	300	70500	48831	693	1967	910	2533
2	2	4	Turner Body Shop #1	83½	51½	494	275	70880	51611	702	1944	883	2498
3	3	6	Turner Body Shop of Holdrege	79½	55½	537	234	69885	49614	681	1898	911	2511
4	4	2	Toothfairy	74	61	515	254	70045	48043	636	1768	887	2494
5	5	7	Versatile Roofing	72½	62½	411	348	68795	39818	557	1539	866	2466
6	6	3	Hilton's Pin Buster	64	71	496	272	69745	49006	697	1896	900	2505
7	7	1	Sequel Bowling Bookworms	59½	75½	537	234	68129	47327	660	1845	859	2430
8	8	8	Bye Team	20	115	0	0	0	0	0	0	0	0

\*\*\* Although not shown, standings are determined by points only for the current split

### Review of Last Week's Bowling....

Lanes	Team Name	HDCP	HDCP	HDCP	HDCP	Last Wk		Team Name	HDCP	HDCP	HDCP	HDCP	Last Wk
		-1-	-2-	-3-	Total	WON			-1-	-2-	-3-	Total	WON
1-2	Dames of the Game	797	788	828	2413	6	<--->	Turner Body Shop #1	769	806	748	2323	3
3-4	Turner Body Shop of	780	779	911	2470	7	<--->	Toothfairy	810	750	813	2373	2
5-6	Versatile Roofing	783	805	754	2342	6	<--->	Hilton's Pin Buster	794	748	782	2324	3
7-8	Sequel Bowling Book	706	767	784	2257	6	<--->	Bye Team	0	0	0	0	3

### Lane Assignments

Wk31 04/14 (Playoff) Turner Body Shop #1 vs. Dames of the Game

### Last Week's Top Scores

Team Scratch Game		Team Scratch Series		Team Handicap Game		Team Handicap Series	
681	Turner Body Shop of Holdr	1813	Turner Body Shop #1	911	Turner Body Shop of Holdr	2470	Turner Body Shop o
636	Turner Body Shop #1	1801	Dames of the Game	828	Dames of the Game	2413	Dames of the Gam
624	Dames of the Game	1780	Turner Body Shop of Holdr	813	Toothfairy	2373	Toothfairy
584	Toothfairy	1686	Toothfairy	806	Turner Body Shop #1	2342	Versatile Roofing
563	Hilton's Pin Buster	1631	Hilton's Pin Buster	805	Versatile Roofing	2324	Hilton's Pin Buster
549	Sequel Bowling Bookworm	1552	Sequel Bowling Bookworm	794	Hilton's Pin Buster	2323	Turner Body Shop
457	Versatile Roofing	1298	Versatile Roofing	784	Sequel Bowling Bookworm	2257	Sequel Bowling Bo
Scratch Game		Scratch Series		Handicap Game		Handicap Series	
247	Rebecca McPherson	614	Rebecca McPherson	263	Rebecca McPherson	662	Rebecca McPherson
189	Ashley Hancock	496	Wanda Westphalen	239	Ashley Hancock	644	Beckie King
186	Wanda Westphalen	479	Beckie King	236	DeAnn Brickner	629	Kira Hancock
175	Kira Hancock	477	Nicole Mulroney	235	Beth Carr	627	Jacqui Moore
173	Beth Carr	471	Ashley Hancock	234	Kira Hancock	621	Eileen McLaughlin
173	DeAnn Brickner	465	Deb Hatcher	231	Gala Sesna	621	DeAnn Brickner
172	Deb Hatcher	452	Kira Hancock	227	Beckie King	621	Ashley Hancock
172	Beckie King	442	Bev Walton	222	Wanda Westphalen	604	Wanda Westphalen
170	Cindy Gibbons	438	Eileen McLaughlin	218	Sue Isaac	604	Bev Walton
166	Nicole Mulroney	438	Denae Washington	217	Jacqui Moore	597	Sue Isaac
				217	Cindy Gibbons		



## Season High Scores

Team Scratch Game		Team Scratch Series		Team Handicap Game		Team Handicap Series	
702	Turner Body Shop #1	1967	Dames of the Game	911	Turner Body Shop of Holdr	2533	Dames of the Gam
697	Hilton's Pin Buster	1944	Turner Body Shop #1	910	Dames of the Game	2511	Turner Body Shop o
693	Dames of the Game	1898	Turner Body Shop of Holdr	900	Hilton's Pin Buster	2505	Hilton's Pin Buster
681	Turner Body Shop of Holdr	1896	Hilton's Pin Buster	887	Toothfairy	2498	Turner Body Shop
660	Sequel Bowling Bookworm	1845	Sequel Bowling Bookworm	883	Turner Body Shop #1	2494	Toothfairy
636	Toothfairy	1768	Toothfairy	866	Versatile Roofing	2466	Versatile Roofing
557	Versatile Roofing	1539	Versatile Roofing	859	Sequel Bowling Bookworm	2430	Sequel Bowling Bo

*Bowlers must have completed a minimum of 70 games to be eligible for any league award.*

Scratch Game		Scratch Series		Handicap Game		Handicap Series	
219	Kira Hancock	561	Wanda Westphalen	281	Kira Hancock	693	Wanda Westphalen
213	Barb Farber	536	Deb Hatcher	264	Bev Walton	676	Bev Walton
213	Wanda Westphalen	521	Barb Farber	259	Barb Farber	675	Eileen McLaughlin
206	Bev Walton	502	Jacque Slagle	257	Wanda Westphalen	674	Lindsay McLaughlin
205	Deb Hatcher	502	Bev Walton	256	Jacqui Moore	672	Kira Hancock
200	Ashley Hancock	502	Ashley Hancock	254	Angie Hauserman	667	Jacque Slagle
198	Jacque Slagle	495	Eileen McLaughlin	253	Lindsay McLaughlin	664	Sue Janssen
190	Eileen McLaughlin	486	Kira Hancock	253	Jacque Slagle	662	DeAnn Brickner
190	Jacqui Moore	485	Lindsay McLaughlin	250	Eileen McLaughlin	658	Angie Hauserman
187	Angie Hauserman	472	Sue Janssen	249	Ashley Hancock	656	Jacqui Moore

## Team Rosters

### 1 - Sequel Bowling Bookworms

Name	Avg	HDCP	Pins	Gms	Points Won	High Game	High Sers	HDCP Game	HDCP Sers	Most Improved Avg +/-	To Raise Avg +1	To Drop Avg -1	Weekly Over Avg Series Avg +/-
Peg Hickman	123	69	2599	21	4.0	156	400	226	610	123 +0.76	377	352	
Jacqui Moore	129	63	9335	72	17.0	190	467	256	656	126 +3.65	415	339	435 - 384=51
Angie C. Hauserman	129	63	10520	81	16.0	187	457	254	658	127 +2.88	400	315	343 - 390=47
Deb L. Hatcher	156	39	13641	87	34.0	205	536	244	653	154 +2.79	489	398	465 - 468=-3

### 2 - Toothfairy

Name	Avg	HDCP	Pins	Gms	Points Won	High Game	High Sers	HDCP Game	HDCP Sers	Most Improved Avg +/-	To Raise Avg +1	To Drop Avg -1	Weekly Over Avg Series Avg +/-
Sheri J. Londer	119	72	7147	60	17.0	166	409	241	628	114 +5.12	413	349	
Etha J. Griffin	125	67	7558	60	13.5	174	438	242	648	125 +0.97	380	316	378 - 375=3
Eileen M. McLaughlin	132	61	9967	75	12.0	190	495	250	675	133 -0.11	407	328	438 - 396=42
Bev Walton	139	54	10485	75	19.0	206	502	264	676	129 +10.80	435	356	442 - 417=25
Cindy Gibbons	147	47	9725	66	14.0	190	509	243	653	144 +3.35	487	417	428 - 441=-13

### 3 - Hilton's Pin Buster

Name	Avg	HDCP	Pins	Gms	Points Won	High Game	High Sers	HDCP Game	HDCP Sers	Most Improved Avg +/-	To Raise Avg +1	To Drop Avg -1	Weekly Over Avg Series Avg +/-
Carrie J. Ludeke	117	74	1996	17	2.5	146	383	217	596		364	343	
Bambi L. Jones	123	69	1849	15	3.0	156	431	229	650		383	364	
Linda K. Johnson	124	68	9739	78	17.0	154	425	224	635	120 +4.86	386	304	392 - 372=20
Tammie J. Runions	132	61	5941	45	7.0	170	445	232	631	130 +2.02	443	394	386 - 396=-10
Sue A. Janssen	135	58	10559	78	12.5	185	472	244	664	133 +2.37	457	375	415 - 405=10
Denae L. Washington	151	44	10148	67	18.5	214	573	260	711	141 +10.46	492	421	438 - 453=-15

### 4 - Turner Body Shop #1

Name	Avg	HDCP	Pins	Gms	Points Won	High Game	High Sers	HDCP Game	HDCP Sers	Most Improved Avg +/-	To Raise Avg +1	To Drop Avg -1	Weekly Over Avg Series Avg +/-
Karen L. Lopez	90	99	4074	45	11.0	123	357	228	657	84 +6.53	294	245	
Kattie L. Johnson	122	70	367	3	1.0	132	367	202	577		371	364	
Beth A. Carr	132	61	10693	81	17.0	173	461	237	653	129 +3.01	479	394	404 - 393=11
Jacque L. Slagle	150	45	11315	75	18.5	198	502	253	667	142 +8.87	463	384	436 - 453=-17
Wanda M. Westphalen	159	36	12910	81	23.0	213	561	257	693	151 +8.38	530	445	496 - 477=19
Nicole J. Mulroney	168	28	11120	66	19.5	224	552	252	636	170 -1.52	541	471	477 - 504=-27

5 - Dames of the Game

Name	Avg	HDCP	Pins	Gms	Points	High	High	HDCP	HDCP	Most Improved		To Raise	To Drop	Weekly Over Avg
					Won	Game	Sers	Game	Sers	Avg	+/-	Avg +1	Avg -1	Series Avg +/-
Brenda J. Sonnenfeld	99	90	298	3	1.0	115	298	205	568			302	295	
Carol J. Fenstermacher	113	78	9537	84	18.0	161	409	240	646	108	+5.54	381	293	354 - 339=15
Helen M. Bockerman	123	69	5909	48	11.0	165	433	239	649	116	+7.10	415	363	
DeAnn M. Brickner	130	63	11001	84	20.0	177	458	243	662	125	+5.96	396	308	432 - 390=42
Michelle Shultheis	146	48	6584	45	8.0	210	549	266	711	142	+4.31	472	423	401 - 441=-40
Rebecca L. McPherson	183	15	11010	60	29.0	259	692	277	746	181	+2.50	582	518	614 - 546=68

6 - Turner Body Shop of Holdrege

Name	Avg	HDCP	Pins	Gms	Points	High	High	HDCP	HDCP	Most Improved		To Raise	To Drop	Weekly Over Avg
					Won	Game	Sers	Game	Sers	Avg	+/-	Avg +1	Avg -1	Series Avg +/-
Trish R. Hancock	126	66	8344	66	16.0	184	451	258	670	121	+5.42	419	349	378 - 378=0
Kira L. Hancock	135	58	10162	75	18.5	219	486	281	672	140	-4.51	446	367	452 - 402=50
Lindsay L. McLaughlin	137	56	9933	72	14.0	182	485	253	674	141	-3.04	417	341	
Beckie S. King	139	54	9226	66	14.0	203	501	260	672	136	+3.79	434	364	479 - 414=65
Ashley K. Hancock	145	49	10882	75	19.5	200	502	249	649	137	+8.09	506	427	471 - 432=39

7 - Versatile Roofing

Name	Avg	HDCP	Pins	Gms	Points	High	High	HDCP	HDCP	Most Improved		To Raise	To Drop	Weekly Over Avg
					Won	Game	Sers	Game	Sers	Avg	+/-	Avg +1	Avg -1	Series Avg +/-
Sandy L. Hauver	78	109	6057	77	11.0	112	292	227	634	74	+4.66	263	182	240 - 234=6
Sue M. Isaac	92	97	4449	48	9.0	127	334	226	634	83	+9.69	294	242	306 - 276=30
Gala Z. Sesna	118	73	7835	66	17.0	175	473	256	701	107	+11.71	376	306	377 - 354=23
Emilie E. Alonso	123	69	5950	48	9.0	156	436	232	640	126	-2.04	374	322	375 - 369=6
Barb Farber	155	40	12125	78	33.0	213	521	259	644	151	+4.45	511	429	

8 - Bye Team

Temporary Substitutes

Name	Avg	HDCP	Pins	Gms	Points	High	High	HDCP	HDCP	Most Improved		To Raise	To Drop	Weekly Over Avg
					Won	Game	Sers	Game	Sers	Avg	+/-	Avg +1	Avg -1	Series Avg +/-
Allie E. Moore	185	13	8175	44	21.0	243	651	261	705	178	+7.80	567	519	
Susan M. Ohlrich	130	63	392	3	1.0	143	392	206	581			394	387	
Amanda A. Sparr	121	71	4006	33	4.0	167	445	231	637	119	+2.39	386	349	
Chris M. Stockton	130	63	780	6	1.0	152	410	221	617			399	389	

Individual High Averages

159.38	Wanda Westphalen	156.79	Deb Hatcher	155.45	Barb Farber	150.87	Jacquie Slagle
145.09	Ashley Hancock	139.80	Bev Walton	137.96	Lindsay McLaughlin	135.49	Kira Hancock
135.37	Sue Janssen	132.89	Eileen McLaughlin	132.01	Beth Carr	130.96	DeAnn Brickner

High Individual Match Points

34	Deb Hatcher	33	Barb Farber	23	Wanda Westphalen	20	DeAnn Brickner
19.5	Ashley Hancock	19	Bev Walton	18.5	Jacquie Slagle	18.5	Kira Hancock
18	Carol Fenstermacher	17	Jacqui Moore	17	Linda Johnson	17	Beth Carr

Most Improved Average

129 to 139.80 = +10.80	Bev Walton	142 to 150.87 = +8.87	Jacquie Slagle	151 to 159.38 = +8.38	Wanda Westphale
137 to 145.09 = +8.09	Ashley Hancock	125 to 130.96 = +5.96	DeAnn Brickner	108 to 113.54 = +5.54	Carol Fenstermac

Most Un-Improved Averages

140 to 135.49 = -4.51	Kira Hancock	141 to 137.96 = -3.04	Lindsay McLaughli	126 to 123.96 = -2.04	Emilie Alonso
170 to 168.48 = -1.52	Nicole Mulroney	133 to 132.89 = -0.11	Eileen McLaughlin	123 to 123.76 = +0.76	Peg Hickman

# Pinette 2022-23

## Big Apple Fun Center

### Reprint of Scores -- Week 30

#### Lane 1 5 - Dames of the Game Week 30 4/7/2023

Name	Old Avg	Old HDCP	-1-	-2-	-3-	Total	HDCP Total
Carol J. Fenstermacher	113	78	89	131	134	354	588
DeAnn M. Brickner	130	63	173	142	117	432	621
Michelle Shultheis	147	47	148	127	126	401	542
Rebecca L. McPherson	182	16	183	184	247	614	662
			====	====	====	====	====
Scratch Total			593	584	624	1801	1801
Handicap			204	204	204		612
Total			797	788	828	1801	2413
Team Points Won			1.0	0.0	1.0	3.0	3.0
Match Points Won			0.0	0.0	0.0	3.0	3.0
Total Points Won			1.0	0.0	1.0	6.0	6.0

#### Lane 3 6 - Turner Body Shop of Holdrege Week 30 4/7/2023

Name	Old Avg	Old HDCP	-1-	-2-	-3-	Total	HDCP Total
Trish R. Hancock	126	66	112	117	149	378	576
Kira L. Hancock	134	59	131	146	175	452	629
Beckie S. King	138	55	172	139	168	479	644
Ashley K. Hancock	144	50	135	147	189	471	621
			====	====	====	====	====
Scratch Total			550	549	681	1780	1780
Handicap			230	230	230		690
Total			780	779	911	1780	2470
Team Points Won			0.0	1.0	1.0	3.0	3.0
Match Points Won			0.0	0.0	0.0	4.0	4.0
Total Points Won			0.0	1.0	1.0	7.0	7.0

#### Lane 5 7 - Versatile Roofing Week 30 4/7/2023

Name	Old Avg	Old HDCP	-1-	-2-	-3-	Total	HDCP Total
Sandy L. Hauver	78	109	97	66	77	240	567
Sue M. Isaac	92	97	84	121	101	306	597
Gala Z. Sesna	118	73	111	158	108	377	596
Emilie E. Alonso	123	69	143	112	120	375	582
			====	====	====	====	====
Scratch Total			435	457	406	1298	1298
Handicap			348	348	348		1044
Total			783	805	754	1298	2342
Team Points Won			0.0	1.0	0.0	2.0	2.0
Match Points Won			0.0	0.0	0.0	4.0	4.0
Total Points Won			0.0	1.0	0.0	6.0	6.0

#### Lane 7 1 - Sequel Bowling Bookworms Week 30 4/7/2023

Name	Old Avg	Old HDCP	-1-	-2-	-3-	Total	HDCP Total
Peg Hickman	123	69	a103	a103	a103	309	516
Jacqui Moore	128	64	130	152	153	435	627
Angie C. Hauserman	130	63	108	114	121	343	532
Deb L. Hatcher	156	39	130	163	172	465	582
			====	====	====	====	====
Scratch Total			471	532	549	1552	1552
Handicap			235	235	235		705
Total			706	767	784	1552	2257
Team Points Won			0.0	1.0	1.0	3.0	3.0
Match Points Won			0.0	0.0	0.0	3.0	3.0
Total Points Won			0.0	1.0	1.0	6.0	6.0

#### Lane 2 4 - Turner Body Shop #1 Week 30 4/7/2023

Name	Old Avg	Old HDCP	-1-	-2-	-3-	Total	HDCP Total
Beth A. Carr	131	62	98	173	133	404	590
Jacque L. Slagle	151	44	149	143	144	436	568
Wanda M. Westphalen	159	36	186	159	151	496	604
Nicole J. Mulroney	168	28	166	161	150	477	561
			====	====	====	====	====
Scratch Total			599	636	578	1813	1813
Handicap			170	170	170		510
Total			769	806	748	1813	2323
Team Points Won			0.0	1.0	0.0	1.0	1.0
Match Points Won			0.0	0.0	0.0	2.0	2.0
Total Points Won			0.0	1.0	0.0	3.0	3.0

#### Lane 4 2 - Toothfairy Week 30 4/7/2023

Name	Old Avg	Old HDCP	-1-	-2-	-3-	Total	HDCP Total
Etha J. Griffin	125	67	140	110	128	378	579
Eileen M. McLaughlin	132	61	154	138	146	438	621
Bev Walton	139	54	152	150	140	442	604
Cindy Gibbons	147	47	135	123	170	428	569
			====	====	====	====	====
Scratch Total			581	521	584	1686	1686
Handicap			229	229	229		687
Total			810	750	813	1686	2373
Team Points Won			1.0	0.0	0.0	1.0	1.0
Match Points Won			0.0	0.0	0.0	1.0	1.0
Total Points Won			1.0	0.0	0.0	2.0	2.0

#### Lane 6 3 - Hilton's Pin Buster Week 30 4/7/2023

Name	Old Avg	Old HDCP	-1-	-2-	-3-	Total	HDCP Total
Linda K. Johnson	124	68	124	141	127	392	596
Tammie J. Runions	132	61	155	101	130	386	569
Sue A. Janssen	135	58	140	119	156	415	589
Denae L. Washington	151	44	144	156	138	438	570
			====	====	====	====	====
Scratch Total			563	517	551	1631	1631
Handicap			231	231	231		693
Total			794	748	782	1631	2324
Team Points Won			1.0	0.0	1.0	2.0	2.0
Match Points Won			0.0	0.0	0.0	1.0	1.0
Total Points Won			1.0	0.0	1.0	3.0	3.0

#### Lane 8 8 - Bye Team Week 30 4/7/2023

Name	Old Avg	Old HDCP	-1-	-2-	-3-	Total	HDCP Total
No one bowled							

# Pinette 2022-23

## Big Apple Fun Center

### Match Points Won (This Week) -- Week 30

#### Lane 1 5 - Dames of the Game Week 30 4/7/2023

Name	Last Wk Won	Last Wk Lost	HDCP -1-	HDCP -2-	HDCP -3-	HDCP Total
Carol J. Fenstermacher		1.0	167	209	212	588
DeAnn M. Brickner	1.0		236	205	180	621
Michelle Shultheis		1.0	195	174	173	542
Rebecca L. McPherson	2.0		199	200	263	662
			=====	=====	=====	=====
Scratch Total			593	584	624	1801
Handicap			204	204	204	612
Total			797	788	828	2413
Team Points Won			1.0	0.0	1.0	3.0
Match Points Won			0.0	0.0	0.0	3.0
Total Points Won			1.0	0.0	1.0	6.0

#### Lane 2 4 - Turner Body Shop #1 Week 30 4/7/2023

Name	Last Wk Won	Last Wk Lost	HDCP -1-	HDCP -2-	HDCP -3-	HDCP Total
Beth A. Carr		1.0	160	235	195	590
Jacque L. Slagle		1.0	193	187	188	568
Wanda M. Westphalen	1.0		222	195	187	604
Nicole J. Mulroney		1.0	194	189	178	561
			=====	=====	=====	=====
Scratch Total			599	636	578	1813
Handicap			170	170	170	510
Total			769	806	748	2323
Team Points Won			0.0	1.0	0.0	1.0
Match Points Won			0.0	0.0	0.0	2.0
Total Points Won			0.0	1.0	0.0	3.0

#### Lane 3 6 - Turner Body Shop of Holdrege Week 30 4/7/2023

Name	Last Wk Won	Last Wk Lost	HDCP -1-	HDCP -2-	HDCP -3-	HDCP Total
Trish R. Hancock		1.0	178	183	215	576
Kira L. Hancock	1.0		190	205	234	629
Beckie S. King	1.0		227	194	223	644
Ashley K. Hancock	2.0		185	197	239	621
			=====	=====	=====	=====
Scratch Total			550	549	681	1780
Handicap			230	230	230	690
Total			780	779	911	2470
Team Points Won			0.0	1.0	1.0	3.0
Match Points Won			0.0	0.0	0.0	4.0
Total Points Won			0.0	1.0	1.0	7.0

#### Lane 4 2 - Toothfairy Week 30 4/7/2023

Name	Last Wk Won	Last Wk Lost	HDCP -1-	HDCP -2-	HDCP -3-	HDCP Total
Etha J. Griffin		1.0	207	177	195	579
Eileen M. McLaughlin		1.0	215	199	207	621
Bev Walton		1.0	206	204	194	604
Cindy Gibbons		1.0	182	170	217	569
			=====	=====	=====	=====
Scratch Total			581	521	584	1686
Handicap			229	229	229	687
Total			810	750	813	2373
Team Points Won			1.0	0.0	0.0	1.0
Match Points Won			0.0	0.0	0.0	1.0
Total Points Won			1.0	0.0	0.0	2.0

#### Lane 5 7 - Versatile Roofing Week 30 4/7/2023

Name	Last Wk Won	Last Wk Lost	HDCP -1-	HDCP -2-	HDCP -3-	HDCP Total
Sandy L. Hauver		1.0	206	175	186	567
Sue M. Isaac	1.0		181	218	198	597
Gala Z. Sesna	2.0		184	231	181	596
Emilie E. Alonso	1.0		212	181	189	582
			=====	=====	=====	=====
Scratch Total			435	457	406	1298
Handicap			348	348	348	1044
Total			783	805	754	2342
Team Points Won			0.0	1.0	0.0	2.0
Match Points Won			0.0	0.0	0.0	4.0
Total Points Won			0.0	1.0	0.0	6.0

#### Lane 6 3 - Hilton's Pin Buster Week 30 4/7/2023

Name	Last Wk Won	Last Wk Lost	HDCP -1-	HDCP -2-	HDCP -3-	HDCP Total
Linda K. Johnson		1.0	192	209	195	596
Tammie J. Runions		1.0	216	162	191	569
Sue A. Janssen		1.0	198	177	214	589
Denae L. Washington		1.0	188	200	182	570
			=====	=====	=====	=====
Scratch Total			563	517	551	1631
Handicap			231	231	231	693
Total			794	748	782	2324
Team Points Won			1.0	0.0	1.0	2.0
Match Points Won			0.0	0.0	0.0	1.0
Total Points Won			1.0	0.0	1.0	3.0

#### Lane 7 1 - Sequel Bowling Bookworms Week 30 4/7/2023

Name	Last Wk Won	Last Wk Lost	HDCP -1-	HDCP -2-	HDCP -3-	HDCP Total
Peg Hickman		1.0	a172	a172	a172	516
Jacqui Moore	1.0		194	216	217	627
Angie C. Hauserman		1.0	171	177	184	532
Deb L. Hatcher	2.0		169	202	211	582
			=====	=====	=====	=====
Scratch Total			471	532	549	1552
Handicap			235	235	235	705
Total			706	767	784	2257
Team Points Won			0.0	1.0	1.0	3.0
Match Points Won			0.0	0.0	0.0	3.0
Total Points Won			0.0	1.0	1.0	6.0

#### Lane 8 8 - Bye Team Week 30 4/7/2023

Name	Last Wk Won	Last Wk Lost	HDCP -1-	HDCP -2-	HDCP -3-	HDCP Total
No one bowled						

# Pinette 2022-23

## Big Apple Fun Center

\* Bowlers listed must have a minimum of 1 games.

### Match Points Won (Total for Year)

Name	Avg	Gms	Points		%Won	Name	Avg	Gms	Points		%Won
			Won	Lost					Won	Lost	
Deb L. Hatcher	156	87	34.0	12.5	73.12%	Cindy Gibbons	147	66	14.0	15.0	48.28%
Barb Farber	155	78	33.0	7.0	82.50%	Beckie S. King	139	66	14.0	10.0	58.33%
Rebecca L. McPherson	183	60	29.0	8.0	78.38%	Etha J. Griffin	125	60	13.5	10.5	56.25%
Wanda M. Westphalen	159	81	23.0	11.0	67.65%	Sue A. Janssen	135	78	12.5	16.5	43.10%
Allie E. Moore	185	44	21.0	6.0	77.78%	Eileen M. McLaughlin	132	75	12.0	13.0	48.00%
DeAnn M. Brickner	130	84	20.0	9.0	68.97%	Karen L. Lopez	90	45	11.0	5.0	68.75%
Nicole J. Mulroney	168	66	19.5	13.0	60.00%	Sandy L. Hauver	78	77	11.0	19.0	36.67%
Ashley K. Hancock	145	75	19.5	8.5	69.64%	Helen M. Bockerman	123	48	11.0	6.0	64.71%
Bev Walton	139	75	19.0	11.0	63.33%	Emilie E. Alonso	123	48	9.0	8.0	52.94%
Denae L. Washington	151	67	18.5	12.0	60.66%	Sue M. Isaac	92	48	9.0	11.0	45.00%
Jacque L. Slagle	150	75	18.5	11.0	62.71%	Michelle Shultheis	146	45	8.0	8.0	50.00%
Kira L. Hancock	135	75	18.5	9.5	66.07%	Tammie J. Runions	132	45	7.0	9.0	43.75%
Carol J. Fenstermacher	113	84	18.0	10.0	64.29%	Peg Hickman	123	21	4.0	22.0	15.38%
Jacqui Moore	129	72	17.0	14.0	54.84%	Amanda A. Sparr	121	33	4.0	7.0	36.36%
Linda K. Johnson	124	78	17.0	11.0	60.71%	Bambi L. Jones	123	15	3.0	3.0	50.00%
Beth A. Carr	132	81	17.0	10.0	62.96%	Carrie J. Ludeke	117	17	2.5	4.5	35.71%
Gala Z. Sesna	118	66	17.0	10.0	62.96%	Brenda J. Sonnenfeld	99	3	1.0		100.00%
Sheri J. Londer	119	60	17.0	3.0	85.00%	Susan M. Ohlrich	130	3	1.0		100.00%
Angie C. Hauserman	129	81	16.0	15.0	51.61%	Chris M. Stockton	130	6	1.0	1.0	50.00%
Trish R. Hancock	126	66	16.0	9.0	64.00%	Kattie L. Johnson	122	3	1.0		100.00%
Lindsay L. McLaughlin	137	72	14.0	12.0	53.85%						

# Pinette 2022-23

## Big Apple Fun Center

\* Bowlers listed must have a minimum of 1 games.

### Change in Average

Name	-----Old-----		Old Avg	---Average Change---			Total	---Average Change---			Weekly Over Avg Series Avg +/-
	Pins	Games		-1-	-2-	-3-		New - Old ---> +/-			
Emilie E. Alonso	5575	45	123	<b>143</b>	112	<b>120</b>	375	123.96	- 123.89	= 0.07	375 - 369=6
Helen M. Bockerman	5909	48	123				0	123.10	- 123.10	= 0.00	
DeAnn M. Brickner	10569	81	130	<b>173</b>	<b>142</b>	117	432	130.96	- 130.48	= 0.48	432 - 390=42
Beth A. Carr	10289	78	131	98	<b>173</b>	133	404	132.01	- 131.91	= 0.10	404 - 393=11
Barb Farber	12125	78	155				0	155.45	- 155.45	= 0.00	
Carol J. Fenstermacher	9183	81	113	<b>89</b>	131	<b>134</b>	354	113.54	- 113.37	= 0.17	354 - 339=15
Cindy Gibbons	9297	63	147	135	123	170	428	147.35	- 147.57	= -0.22	428 - 441=-13
Etha J. Griffin	7180	57	125	<b>140</b>	110	128	378	125.97	- 125.96	= 0.00	378 - 375=3
Ashley K. Hancock	10411	72	144	<b>135</b>	<b>147</b>	<b>189</b>	471	145.09	- 144.60	= 0.50	471 - 432=39
Kira L. Hancock	9710	72	134	131	<b>146</b>	<b>175</b>	452	135.49	- 134.86	= 0.63	452 - 402=50
Trish R. Hancock	7966	63	126	112	<b>117</b>	<b>149</b>	378	126.42	- 126.44	= -0.02	378 - 378=0
Deb L. Hatcher	13176	84	156	<b>130</b>	<b>163</b>	<b>172</b>	465	156.79	- 156.86	= -0.06	465 - 468=-3
Angie C. Hauserman	10177	78	130	<b>108</b>	<b>114</b>	<b>121</b>	343	129.88	- 130.47	= -0.60	343 - 390=-47
Sandy L. Hauver	5817	74	78	<b>97</b>	66	77	240	78.66	- 78.61	= 0.05	240 - 234=6
Peg Hickman	2599	21	123	<b>a103</b>	<b>a103</b>	<b>a103</b>	309	123.76	- 123.76	= 0.00	
Sue M. Isaac	4143	45	92	84	<b>121</b>	<b>101</b>	306	92.69	- 92.07	= 0.62	306 - 276=30
Sue A. Janssen	10144	75	135	<b>140</b>	119	<b>156</b>	415	135.37	- 135.25	= 0.12	415 - 405=10
Kattie L. Johnson	367	3	122				0	122.33	- 122.33	= 0.00	
Linda K. Johnson	9347	75	124	124	<b>141</b>	<b>127</b>	392	124.86	- 124.63	= 0.23	392 - 372=20
Bambi L. Jones	1849	15	123				0	123.27	- 123.27	= 0.00	
Beckie S. King	8747	63	138	<b>172</b>	139	<b>168</b>	479	139.79	- 138.84	= 0.95	479 - 414=65
Sheri J. Londer	7147	60	119				0	119.12	- 119.12	= 0.00	
Karen L. Lopez	4074	45	90				0	90.53	- 90.53	= 0.00	
Carrie J. Ludeke	1996	17	117				0	117.41	- 117.41	= 0.00	
Eileen M. McLaughlin	9529	72	132	<b>154</b>	138	146	438	132.89	- 132.35	= 0.55	438 - 396=42
Lindsay L. McLaughlin	9933	72	137				0	137.96	- 137.96	= 0.00	
Rebecca L. McPherson	10396	57	182	<b>183</b>	<b>184</b>	<b>247</b>	614	183.50	- 182.39	= 1.11	614 - 546=68
Allie E. Moore	8175	44	185				0	185.80	- 185.80	= 0.00	
Jacqui Moore	8900	69	128	<b>130</b>	<b>152</b>	<b>153</b>	435	129.65	- 128.99	= 0.67	435 - 384=51
Nicole J. Mulroney	10643	63	168	166	161	150	477	168.48	- 168.94	= -0.45	477 - 504=-27
Susan M. Ohlrich	392	3	130				0	130.67	- 130.67	= 0.00	
Tammie J. Runions	5555	42	132	<b>155</b>	101	130	386	132.02	- 132.26	= -0.24	386 - 396=-10
Gala Z. Sesna	7458	63	118	111	<b>158</b>	108	377	118.71	- 118.38	= 0.33	377 - 354=23
Michelle Shultheis	6183	42	147	148	127	126	401	146.31	- 147.21	= -0.90	401 - 441=-40
Jacquie L. Slagle	10879	72	151	149	143	<b>144</b>	436	150.87	- 151.10	= -0.23	436 - 453=-17
Brenda J. Sonnenfeld	298	3	99				0	99.33	- 99.33	= 0.00	
Amanda A. Sparr	4006	33	121				0	121.39	- 121.39	= 0.00	

**Pinette 2022-23**

<u>Name</u>	<u>-----Old-----</u>		<u>Old</u>					<u>---Average Change---</u>			<u>Weekly Over Avg</u>
	<u>Pins</u>	<u>Games</u>	<u>Avg</u>	<u>-1-</u>	<u>-2-</u>	<u>-3-</u>	<u>Total</u>	<u>New - Old</u>	<u>---&gt; +/-</u>	<u>Series Avg +/-</u>	
Chris M. Stockton	780	6	130				0	130.00 - 130.00	=	0.00	
Bev Walton	10043	72	139	152	<b>150</b>	140	442	139.80 - 139.49	=	0.31	442 - 417=25
Denae L. Washington	9710	64	151	144	<b>156</b>	138	438	151.46 - 151.72	=	-0.26	438 - 453=-15
Wanda M. Westphalen	12414	78	159	<b>186</b>	<b>159</b>	<b>151</b>	496	159.38 - 159.15	=	0.23	496 - 477=19

# Pinette 2022-23

## Big Apple Fun Center

\* Bowlers listed must have a minimum of 1 games.

### High Average Listing

	<u>Name</u>	<u>True Average</u>	<u>Pins</u>	<u>Gms</u>	<u>To Raise Avg +1</u>	<u>To Drop Avg -1</u>
1	Allie E. Moore	185.80	8175	44	567	519
2	Rebecca L. McPherson	183.50	11010	60	582	518
3	Nicole J. Mulrone	168.48	11120	66	541	471
4	Wanda M. Westphalen	159.38	12910	81	530	445
5	Deb L. Hatcher	156.79	13641	87	489	398
6	Barb Farber	155.45	12125	78	511	429
7	Denae L. Washington	151.46	10148	67	492	421
8	Jacque L. Slagle	150.87	11315	75	463	384
9	Cindy Gibbons	147.35	9725	66	487	417
10	Michelle Shultheis	146.31	6584	45	472	423
11	Ashley K. Hancock	145.09	10882	75	506	427
12	Bev Walton	139.80	10485	75	435	356
13	Beckie S. King	139.79	9226	66	434	364
14	Lindsay L. McLaughlin	137.96	9933	72	417	341
15	Kira L. Hancock	135.49	10162	75	446	367
16	Sue A. Janssen	135.37	10559	78	457	375
17	Eileen M. McLaughlin	132.89	9967	75	407	328
18	Tammie J. Runions	132.02	5941	45	443	394
19	Beth A. Carr	132.01	10693	81	479	394
20	DeAnn M. Brickner	130.96	11001	84	396	308
21	Susan M. Ohlrich	130.67	392	3	394	387
22	Chris M. Stockton	130.00	780	6	399	389
23	Angie C. Hauserman	129.88	10520	81	400	315
24	Jacqui Moore	129.65	9335	72	415	339
25	Trish R. Hancock	126.42	8344	66	419	349
26	Etha J. Griffin	125.97	7558	60	380	316
27	Linda K. Johnson	124.86	9739	78	386	304
28	Emilie E. Alonso	123.96	5950	48	374	322
29	Peg Hickman	123.76	2599	21	377	352
30	Bambi L. Jones	123.27	1849	15	383	364
31	Helen M. Bockerman	123.10	5909	48	415	363
32	Kattie L. Johnson	122.33	367	3	371	364
33	Amanda A. Sparr	121.39	4006	33	386	349
34	Sheri J. Londer	119.12	7147	60	413	349
35	Gala Z. Sesna	118.71	7835	66	376	306
36	Carrie J. Ludeke	117.41	1996	17	364	343
37	Carol J. Fenstermacher	113.54	9537	84	381	293
38	Brenda J. Sonnenfeld	99.33	298	3	302	295
39	Sue M. Isaac	92.69	4449	48	294	242
40	Karen L. Lopez	90.53	4074	45	294	245
41	Sandy L. Hauver	78.66	6057	77	263	182



# Pinette 2022-23

## Big Apple Fun Center

\* Bowlers listed must have a minimum of 22 games.

Note: This report includes information through April 7 which is Week 30 of 31

### Most Improved Averages

Name	True Average	Most Improved Avg	+/-	Name	True Average	Most Improved Avg	+/-
Gala Z. Sesna	118.71	107	+11.71	Michelle Shultheis	146.31	142	+4.31
Bev Walton	139.80	129	+10.80	Beckie S. King	139.79	136	+3.79
Denae L. Washington	151.46	141	+10.46	Jacqui Moore	129.65	126	+3.65
Sue M. Isaac	92.69	83	+9.69	Cindy Gibbons	147.35	144	+3.35
Jacquie L. Slagle	150.87	142	+8.87	Beth A. Carr	132.01	129	+3.01
Wanda M. Westphalen	159.38	151	+8.38	Angie C. Hauserman	129.88	127	+2.88
Ashley K. Hancock	145.09	137	+8.09	Deb L. Hatcher	156.79	154	+2.79
Allie E. Moore	185.80	178	+7.80	Rebecca L. McPherson	183.50	181	+2.50
Helen M. Bockerman	123.10	116	+7.10	Amanda A. Sparr	121.39	119	+2.39
Karen L. Lopez	90.53	84	+6.53	Sue A. Janssen	135.37	133	+2.37
DeAnn M. Brickner	130.96	125	+5.96	Tammie J. Runions	132.02	130	+2.02
Carol J. Fenstermacher	113.54	108	+5.54	Etha J. Griffin	125.97	125	+0.97
Trish R. Hancock	126.42	121	+5.42	Eileen M. McLaughlin	132.89	133	-0.11
Sheri J. Londer	119.12	114	+5.12	Nicole J. Mulrone	168.48	170	-1.52
Linda K. Johnson	124.86	120	+4.86	Emilie E. Alonso	123.96	126	-2.04
Sandy L. Hauver	78.66	74	+4.66	Lindsay L. McLaughlin	137.96	141	-3.04
Barb Farber	155.45	151	+4.45	Kira L. Hancock	135.49	140	-4.51

# Pinette 2022-23

## Big Apple Fun Center

\* Bowlers listed must have a minimum of 1 games.

### Most Pins Over Average

Name	-----Old-----		Old				---Average Change---			Weekly Over Avg
	Pins	Games	Avg	-1-	-2-	-3-	Total	New - Old	---> +/-	Series Avg +/-
Rebecca L. McPherson	10396	57	182	<b>183</b>	<b>184</b>	<b>247</b>	614	183.50 - 182.39	= 1.11	614 - 546=68
Beckie S. King	8747	63	138	<b>172</b>	139	<b>168</b>	479	139.79 - 138.84	= 0.95	479 - 414=65
Jacqui Moore	8900	69	128	<b>130</b>	<b>152</b>	<b>153</b>	435	129.65 - 128.99	= 0.67	435 - 384=51
Kira L. Hancock	9710	72	134	131	<b>146</b>	<b>175</b>	452	135.49 - 134.86	= 0.63	452 - 402=50
Eileen M. McLaughlin	9529	72	132	<b>154</b>	138	146	438	132.89 - 132.35	= 0.55	438 - 396=42
DeAnn M. Brickner	10569	81	130	<b>173</b>	<b>142</b>	117	432	130.96 - 130.48	= 0.48	432 - 390=42
Ashley K. Hancock	10411	72	144	<b>135</b>	<b>147</b>	<b>189</b>	471	145.09 - 144.60	= 0.50	471 - 432=39
Sue M. Isaac	4143	45	92	84	<b>121</b>	<b>101</b>	306	92.69 - 92.07	= 0.62	306 - 276=30
Bev Walton	10043	72	139	152	<b>150</b>	140	442	139.80 - 139.49	= 0.31	442 - 417=25
Gala Z. Sesna	7458	63	118	111	<b>158</b>	108	377	118.71 - 118.38	= 0.33	377 - 354=23
Linda K. Johnson	9347	75	124	124	<b>141</b>	<b>127</b>	392	124.86 - 124.63	= 0.23	392 - 372=20
Wanda M. Westphalen	12414	78	159	<b>186</b>	<b>159</b>	<b>151</b>	496	159.38 - 159.15	= 0.23	496 - 477=19
Carol J. Fenstermacher	9183	81	113	<b>89</b>	131	<b>134</b>	354	113.54 - 113.37	= 0.17	354 - 339=15
Beth A. Carr	10289	78	131	98	<b>173</b>	133	404	132.01 - 131.91	= 0.10	404 - 393=11
Sue A. Janssen	10144	75	135	<b>140</b>	119	<b>156</b>	415	135.37 - 135.25	= 0.12	415 - 405=10
Emilie E. Alonso	5575	45	123	<b>143</b>	112	<b>120</b>	375	123.96 - 123.89	= 0.07	375 - 369=6
Sandy L. Hauver	5817	74	78	<b>97</b>	66	77	240	78.66 - 78.61	= 0.05	240 - 234=6
Etha J. Griffin	7180	57	125	<b>140</b>	110	128	378	125.97 - 125.96	= 0.00	378 - 375=3
Trish R. Hancock	7966	63	126	112	<b>117</b>	<b>149</b>	378	126.42 - 126.44	= -0.02	378 - 378=0
Deb L. Hatcher	13176	84	156	130	<b>163</b>	<b>172</b>	465	156.79 - 156.86	= -0.06	465 - 468=-3
Tammie J. Runions	5555	42	132	<b>155</b>	101	130	386	132.02 - 132.26	= -0.24	386 - 396=-10
Cindy Gibbons	9297	63	147	135	123	170	428	147.35 - 147.57	= -0.22	428 - 441=-13
Denae L. Washington	9710	64	151	144	<b>156</b>	138	438	151.46 - 151.72	= -0.26	438 - 453=-15
Jacquie L. Slagle	10879	72	151	149	143	<b>144</b>	436	150.87 - 151.10	= -0.23	436 - 453=-17
Nicole J. Mulrone	10643	63	168	166	161	150	477	168.48 - 168.94	= -0.45	477 - 504=-27
Michelle Shultheis	6183	42	147	148	127	126	401	146.31 - 147.21	= -0.90	401 - 441=-40
Angie C. Hauserman	10177	78	130	108	114	<b>121</b>	343	129.88 - 130.47	= -0.60	343 - 390=-47

# Pinette 2022-23

## Big Apple Fun Center

This report is for scores bowled April 7 which is Week 30 of 31

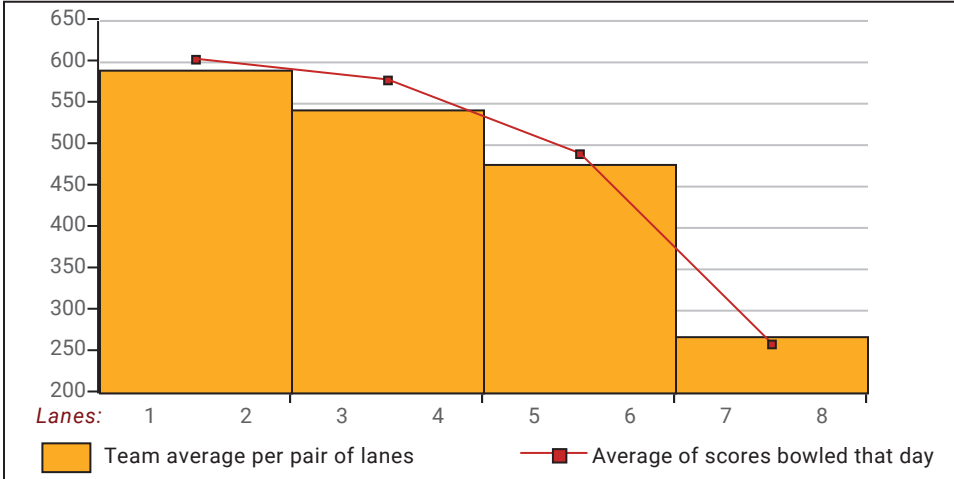
### This Week's Statistics: Lefties vs Righties

Unless designated left handed, bowlers are considered right handed.

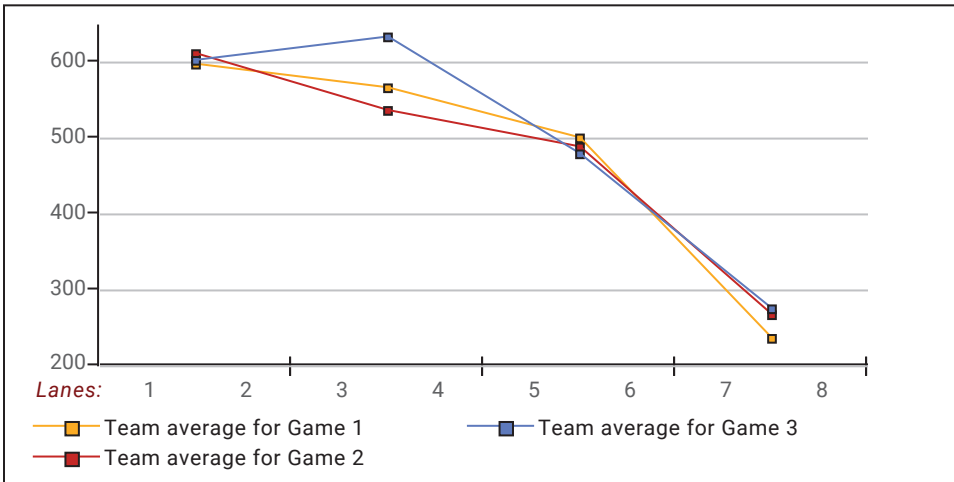
	Over All	Right	Left
How many people bowled	27	27	0
Number of games bowled	81	81	0
Actual average of week's scores	138.91	138.91	0.00
How many games above average	44	44	0
How many games below average	35	35	0
Pins above/below average per game	4.36	4.36	0.00
How many people raised average	18	18	--
by this amount	0.40	0.40	0.00
How many people went down	9	9	--
by this amount	-0.33	-0.33	0.00
League average before bowling	135.10	135.10	0.00
League average after bowling	135.26	135.26	0.00
Change in league average	0.15	0.15	0.00
800s	--	--	--
775s	--	--	--
750s	--	--	--
725s	--	--	--
700s	--	--	--
675s	--	--	--
650s	--	--	--
625s	--	--	--
600s	1	1	--
575s	--	--	--
550s	--	--	--
525s	--	--	--
500s	--	--	--
475s	3	3	--
450s	3	3	--
425s	7	7	--
400s	3	3	--
below 400	10	10	--
300s	--	--	--
275s	--	--	--
250s	--	--	--
225s	1	1	--
200s	--	--	--
175s	5	5	--
150s	21	21	--
125s	31	31	--
100s	17	17	--
below 100	6	6	--

This report is for scores bowled April 7 which is Week 30 of 31

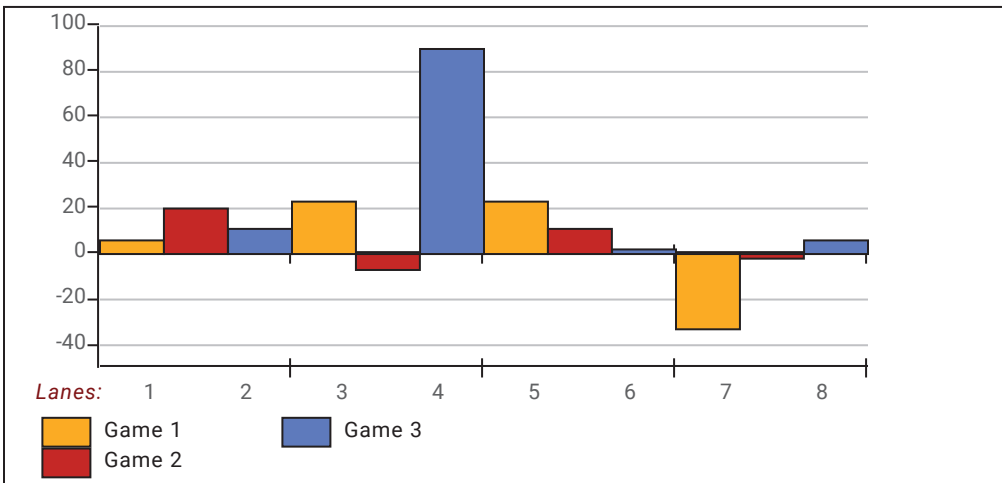
**Team Average vs Avg of Scores**



**Average of Scores for Each Game**

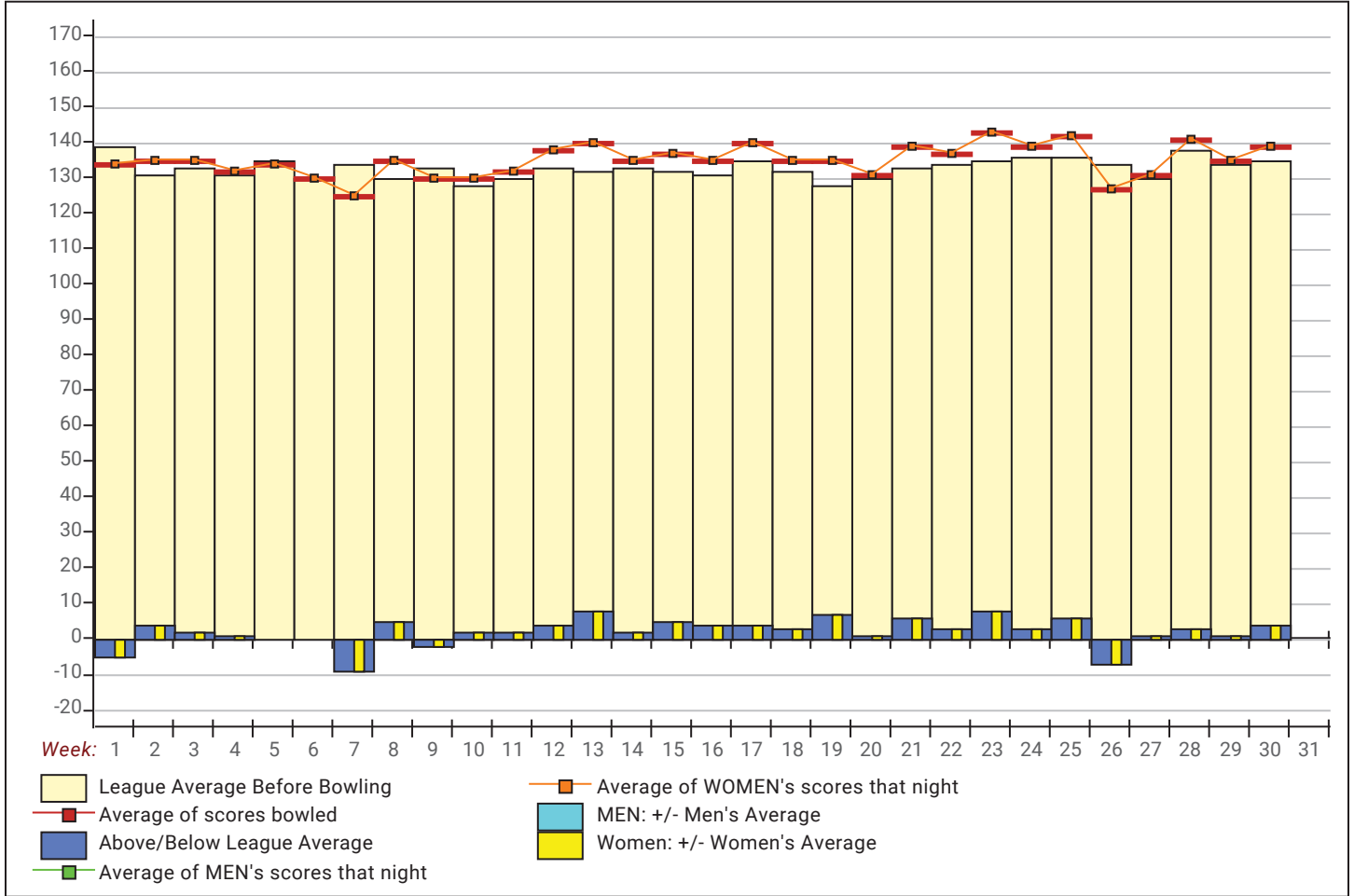


**Amount Over/Under Team Average**



This report is for scores bowled April 7 which is Week 30 of 31

**League Average Week-by-Week**



**League Average Statistics for Last Week**

	League	Right Hand	Left Hand
League Average Before Bowling	135.10	135.10	
Average of scores bowled that night	138.91	138.91	
New League Average After Bowling	135.26	135.26	
Change in League Average	.15	.15	
People Who Bowled Over Average	18	18	
People Who Bowled Under Average	9	9	
Average Amount of Series Over Avg	29.17	29.17	
Average Amount of Series Under Avg	-19.11	-19.11	
Difference Avg, NiteAvg	4.36	4.36	
Number of Bowlers	27	27	
Number of Games Bowled	81	81	
People Who Raised Their Average	18	18	
Raised By an Average of This Amount	.40	.40	
People Who Lowered Their Average	9	9	
Lowered By an Average of This Amou	-.33	-.33	
Number of Games Bowled Over Avera	44	44	
Number of Games Bowled Under Avera	35	35	

*Note: Averages are based only on people who bowled.*

# Press Release -- 4/8/2023

4/7/2023 Week 30 of 31

## Pinette 2022-23

Friday 6:30 pm

Big Apple Fun Center

Lanes 1 - 8

### Team Standings

Place	Team Name	Avg p/gm	Points Won	Points Lost	Year-To-Date WON	Y-T-D LOST
1	Dames of the Game	542	87	48	164½	105½
2	Turner Body Shop #1	573	83½	51½	167	103
3	Turner Body Shop of Holdrege	551	79½	55½	158	112
4	Toothfairy	533	74	61	142	128
5	Versatile Roofing	442	72½	62½	141	129
6	Hilton's Pin Buster	544	64	71	139½	130½
7	Sequel Bowling Bookworms	525	59½	75½	127	143
8	Bye Team		20	115	41	229

\*\*\* Although not shown, standings are determined by points only for the current split

### Last Week's Top Scores

Scratch Game		Scratch Series		Handicap Game		Handicap Series	
247	Rebecca McPherson	614	Rebecca McPherson	263	Rebecca McPherson	662	Rebecca McPherson
189	Ashley Hancock	496	Wanda Westphalen	239	Ashley Hancock	644	Beckie King
186	Wanda Westphalen	479	Beckie King	236	DeAnn Brickner	629	Kira Hancock
175	Kira Hancock	477	Nicole Mulroney	235	Beth Carr	627	Jacqui Moore
173	Beth Carr	471	Ashley Hancock	234	Kira Hancock	621	Eileen McLaughlin
173	DeAnn Brickner	465	Deb Hatcher	231	Gala Sesna	621	DeAnn Brickner
172	Deb Hatcher	452	Kira Hancock	227	Beckie King	621	Ashley Hancock
172	Beckie King	442	Bev Walton	222	Wanda Westphalen	604	Wanda Westphalen
170	Cindy Gibbons	438	Eileen McLaughlin	218	Sue Isaac	604	Bev Walton
166	Nicole Mulroney	438	Denae Washington	217	Jacqui Moore	597	Sue Isaac
				217	Cindy Gibbons		

### Local and Bowling Center Awards

Name	USBC ID Number	Award Average	Award Games	G1	G2	G3	Series	Award Score	Award Received
Kira L. Hancock	4132-797 USBC	134	72	131	146	175	452	175	175 Game (Local Assoc. Awards)
Rebecca L. McPherson	6197-339 USBC	182	57	183	184	247	614	247	225 Game (Local Assoc. Awards)
Gala Z. Sesna	4132-360 USBC	118	63	111	158	108	377	158	150 Game (Local Assoc. Awards)

# Pinette 2022-23

Friday 6:30 pm

## Big Apple Fun Center

Lanes 7 - 8

President: Sue Janssen Vice President: Bev Walton  
Secretary/Treasurer: Rebecca McPherson

### League Championship

Place	#	Team Name	Points	Points	Team	Pins +	Scratch	High Scratch		High HDCP		
			Won	Lost	Avg	HDCP	HDCP	Pins	10	30	10	30
1	4	Turner Body Shop #1	9	0	495	274	73436	53657	731	2046	901	2556
2	5	Dames of the Game	0	9	464	301	72713	50414	693	1967	910	2533

### Review of Last Week's Bowling.....

Lanes	Team Name	HDCP	HDCP	HDCP	HDCP	Last Wk		Team Name	HDCP	HDCP	HDCP	HDCP	Last Wk
		-1-	-2-	-3-	Total	WON	<--->		-1-	-2-	-3-	Total	WON
7-8	Turner Body Shop #1	901	862	793	2556	9		Dames of the Game	748	744	721	2213	0

**Thanks for bowling! We hope you had a good time. See you next season!**

### Last Week's Top Scores

Team Scratch Game		Team Scratch Series		Team Handicap Game		Team Handicap Series	
731	Turner Body Shop #1	2046	Turner Body Shop #1	901	Turner Body Shop #1	2556	Turner Body Shop
538	Dames of the Game	1583	Dames of the Game	748	Dames of the Game	2213	Dames of the Gam
Scratch Game		Scratch Series		Handicap Game		Handicap Series	
234	Nicole Mulrone	586	Nicole Mulrone	262	Nicole Mulrone	670	Nicole Mulrone
190	Jacquie Slagle	524	Wanda Westphalen	235	Jacquie Slagle	636	Beth Carr
187	Wanda Westphalen	483	Jacquie Slagle	223	Wanda Westphalen	632	Wanda Westphalen
174	Michelle Shultheis	460	Rebecca McPherson	222	Michelle Shultheis	618	Jacquie Slagle
165	Rebecca McPherson	456	Michelle Shultheis	219	Beth Carr	600	Michelle Shultheis
158	Beth Carr	453	Beth Carr	201	Carol Fenstermacher	566	Carol Fenstermacher
124	Helen Bockerman	335	Helen Bockerman	193	Helen Bockerman	542	Helen Bockerman
123	Carol Fenstermacher	332	Carol Fenstermacher	180	Rebecca McPherson	505	Rebecca McPherson

### Season High Scores

Team Scratch Game		Team Scratch Series		Team Handicap Game		Team Handicap Series	
731	Turner Body Shop #1	2046	Turner Body Shop #1	911	Turner Body Shop of Holdr	2556	Turner Body Shop
697	Hilton's Pin Buster	1967	Dames of the Game	910	Dames of the Game	2533	Dames of the Gam
693	Dames of the Game	1898	Turner Body Shop of Holdr	901	Turner Body Shop #1	2511	Turner Body Shop o
681	Turner Body Shop of Holdr	1896	Hilton's Pin Buster	900	Hilton's Pin Buster	2505	Hilton's Pin Buster
660	Sequel Bowling Bookworm	1845	Sequel Bowling Bookworm	887	Toothfairy	2494	Toothfairy
636	Toothfairy	1768	Toothfairy	866	Versatile Roofing	2466	Versatile Roofing
557	Versatile Roofing	1539	Versatile Roofing	859	Sequel Bowling Bookworm	2430	Sequel Bowling Bo
Scratch Game		Scratch Series		Handicap Game		Handicap Series	
219	Kira Hancock	561	Wanda Westphalen	281	Kira Hancock	693	Wanda Westphalen
213	Barb Farber	536	Deb Hatcher	264	Bev Walton	676	Bev Walton
213	Wanda Westphalen	521	Barb Farber	259	Barb Farber	675	Eileen McLaughlin
206	Bev Walton	502	Jacquie Slagle	257	Wanda Westphalen	674	Lindsay McLaughlin
205	Deb Hatcher	502	Bev Walton	256	Jacqui Moore	672	Kira Hancock
200	Ashley Hancock	502	Ashley Hancock	254	Angie Hauserman	667	Jacquie Slagle
198	Jacquie Slagle	495	Eileen McLaughlin	253	Lindsay McLaughlin	664	Sue Janssen
190	Eileen McLaughlin	486	Kira Hancock	253	Jacquie Slagle	662	DeAnn Brickner
190	Jacqui Moore	485	Lindsay McLaughlin	250	Eileen McLaughlin	658	Angie Hauserman
187	Angie Hauserman	472	Sue Janssen	249	Ashley Hancock	656	Jacqui Moore

**Team Rosters****1 - Sequel Bowling Bookworms**

<u>Name</u>	<u>Avg</u>	<u>HDCP</u>	<u>Pins</u>	<u>Gms</u>	<u>Points Won</u>	<u>High Game</u>	<u>High Sers</u>	<u>HDCP Game</u>	<u>HDCP Sers</u>	<u>Most Improved Avg +/-</u>	<u>To Raise Avg +1</u>	<u>To Drop Avg -1</u>	<u>Weekly Over Avg Series Avg +/-</u>
Peg Hickman	123	69	2599	21	4.0	156	400	226	610	123 +0.76	377	352	
Jacqui Moore	129	63	9335	72	17.0	190	467	256	656	126 +3.65	415	339	
Angie C. Hauserman	129	63	10520	81	16.0	187	457	254	658	127 +2.88	400	315	
Deb L. Hatcher	156	39	13641	87	34.0	205	536	244	653	154 +2.79	489	398	

**2 - Toothfairy**

<u>Name</u>	<u>Avg</u>	<u>HDCP</u>	<u>Pins</u>	<u>Gms</u>	<u>Points Won</u>	<u>High Game</u>	<u>High Sers</u>	<u>HDCP Game</u>	<u>HDCP Sers</u>	<u>Most Improved Avg +/-</u>	<u>To Raise Avg +1</u>	<u>To Drop Avg -1</u>	<u>Weekly Over Avg Series Avg +/-</u>
Sheri J. Londer	119	72	7147	60	17.0	166	409	241	628	114 +5.12	413	349	
Etha J. Griffin	125	67	7558	60	13.5	174	438	242	648	125 +0.97	380	316	
Eileen M. McLaughlin	132	61	9967	75	12.0	190	495	250	675	133 -0.11	407	328	
Bev Walton	139	54	10485	75	19.0	206	502	264	676	129 +10.80	435	356	
Cindy Gibbons	147	47	9725	66	14.0	190	509	243	653	144 +3.35	487	417	

**3 - Hilton's Pin Buster**

<u>Name</u>	<u>Avg</u>	<u>HDCP</u>	<u>Pins</u>	<u>Gms</u>	<u>Points Won</u>	<u>High Game</u>	<u>High Sers</u>	<u>HDCP Game</u>	<u>HDCP Sers</u>	<u>Most Improved Avg +/-</u>	<u>To Raise Avg +1</u>	<u>To Drop Avg -1</u>	<u>Weekly Over Avg Series Avg +/-</u>
Carrie J. Ludeke	117	74	1996	17	2.5	146	383	217	596		364	343	
Bambi L. Jones	123	69	1849	15	3.0	156	431	229	650		383	364	
Linda K. Johnson	124	68	9739	78	17.0	154	425	224	635	120 +4.86	386	304	
Tammie J. Runions	132	61	5941	45	7.0	170	445	232	631	130 +2.02	443	394	
Sue A. Janssen	135	58	10559	78	12.5	185	472	244	664	133 +2.37	457	375	
Denae L. Washington	151	44	10148	67	18.5	214	573	260	711	141 +10.46	492	421	

**4 - Turner Body Shop #1**

<u>Name</u>	<u>Avg</u>	<u>HDCP</u>	<u>Pins</u>	<u>Gms</u>	<u>Points Won</u>	<u>High Game</u>	<u>High Sers</u>	<u>HDCP Game</u>	<u>HDCP Sers</u>	<u>Most Improved Avg +/-</u>	<u>To Raise Avg +1</u>	<u>To Drop Avg -1</u>	<u>Weekly Over Avg Series Avg +/-</u>
Karen L. Lopez	90	99	4074	45	11.0	123	357	228	657	84 +6.53	294	245	
Kattie L. Johnson	122	70	367	3	1.0	132	367	202	577		371	364	
Beth A. Carr	132	61	11146	84	18.0	173	461	237	653	129 +3.69	425	337	453 - 396=57
Jacquie L. Slagle	151	44	11798	78	19.5	198	502	253	667	142 +9.26	514	432	483 - 450=33
Wanda M. Westphalen	159	36	13434	84	24.0	213	561	257	693	151 +8.93	486	398	524 - 477=47
Nicole J. Mulroney	169	27	11706	69	21.5	234	586	262	670	170 -0.35	534	461	586 - 504=82

**5 - Dames of the Game**

<u>Name</u>	<u>Avg</u>	<u>HDCP</u>	<u>Pins</u>	<u>Gms</u>	<u>Points Won</u>	<u>High Game</u>	<u>High Sers</u>	<u>HDCP Game</u>	<u>HDCP Sers</u>	<u>Most Improved Avg +/-</u>	<u>To Raise Avg +1</u>	<u>To Drop Avg -1</u>	<u>Weekly Over Avg Series Avg +/-</u>
Brenda J. Sonnenfeld	99	90	298	3	1.0	115	298	205	568		302	295	
Carol J. Fenstermacher	113	78	9869	87	18.0	161	409	240	646	108 +5.44	391	300	332 - 339=-7
Helen M. Bockerman	122	70	6244	51	11.0	165	433	239	649	116 +6.43	398	343	335 - 369=-34
DeAnn M. Brickner	130	63	11001	84	20.0	177	458	243	662	125 +5.96	396	308	
Michelle Shultheis	146	48	7040	48	8.0	210	549	266	711	142 +4.67	457	405	456 - 438=18
Rebecca L. McPherson	182	16	11470	63	29.0	259	692	277	746	181 +1.06	608	541	460 - 549=-89

**6 - Turner Body Shop of Holdrege**

<u>Name</u>	<u>Avg</u>	<u>HDCP</u>	<u>Pins</u>	<u>Gms</u>	<u>Points Won</u>	<u>High Game</u>	<u>High Sers</u>	<u>HDCP Game</u>	<u>HDCP Sers</u>	<u>Most Improved Avg +/-</u>	<u>To Raise Avg +1</u>	<u>To Drop Avg -1</u>	<u>Weekly Over Avg Series Avg +/-</u>
Trish R. Hancock	126	66	8344	66	16.0	184	451	258	670	121 +5.42	419	349	
Kira L. Hancock	135	58	10162	75	18.5	219	486	281	672	140 -4.51	446	367	
Lindsay L. McLaughlin	137	56	9933	72	14.0	182	485	253	674	141 -3.04	417	341	
Beckie S. King	139	54	9226	66	14.0	203	501	260	672	136 +3.79	434	364	
Ashley K. Hancock	145	49	10882	75	19.5	200	502	249	649	137 +8.09	506	427	

**7 - Versatile Roofing**

<u>Name</u>	<u>Avg</u>	<u>HDCP</u>	<u>Pins</u>	<u>Gms</u>	<u>Points Won</u>	<u>High Game</u>	<u>High Sers</u>	<u>HDCP Game</u>	<u>HDCP Sers</u>	<u>Most Improved Avg +/-</u>	<u>To Raise Avg +1</u>	<u>To Drop Avg -1</u>	<u>Weekly Over Avg Series Avg +/-</u>
Sandy L. Hauver	78	109	6057	77	11.0	112	292	227	634	74 +4.66	263	182	
Sue M. Isaac	92	97	4449	48	9.0	127	334	226	634	83 +9.69	294	242	
Gala Z. Sesna	118	73	7835	66	17.0	175	473	256	701	107 +11.71	376	306	
Emilie E. Alonso	123	69	5950	48	9.0	156	436	232	640	126 -2.04	374	322	
Barb Farber	155	40	12125	78	33.0	213	521	259	644	151 +4.45	511	429	



8 - Bye Team

**Temporary Substitutes**

<u>Name</u>	<u>Avg</u>	<u>HDCP</u>	<u>Pins</u>	<u>Gms</u>	<u>Points Won</u>	<u>High Game</u>	<u>High Sers</u>	<u>HDCP Game</u>	<u>HDCP Sers</u>	<u>Most Improved Avg +/-</u>	<u>To Raise Avg +1</u>	<u>To Drop Avg -1</u>	<u>Weekly Over Avg Series Avg +/-</u>
Allie E. Moore	185	13	8175	44	21.0	243	651	261	705	178 +7.80	567	519	
Susan M. Ohlrich	130	63	392	3	1.0	143	392	206	581		394	387	
Amanda A. Sparr	121	71	4006	33	4.0	167	445	231	637	119 +2.39	386	349	
Chris M. Stockton	130	63	780	6	1.0	152	410	221	617		399	389	

**Individual High Averages**

159.93	Wanda Westphalen	156.79	Deb Hatcher	155.45	Barb Farber	151.26	Jacquie Slagle
145.09	Ashley Hancock	139.80	Bev Walton	137.96	Lindsay McLaughlin	135.49	Kira Hancock
135.37	Sue Janssen	132.89	Eileen McLaughlin	132.69	Beth Carr	130.96	DeAnn Brickner

# Pinette 2022-23

## Big Apple Fun Center

### Reprint of Scores -- League Championship

Lane 7 4 - Turner Body Shop #1 Week 31 4/14/2023

Name	Old	Old	HDCP				
	Avg	HDCP	-1-	-2-	-3-	Total	Total
Beth A. Carr	132	61	158	154	141	453	636
Jacque L. Slagle	150	45	158	190	135	483	618
Wanda M. Westphalen	159	36	181	156	187	524	632
Nicole J. Mulrone	168	28	234	192	160	586	670
			====	====	====	====	====
Scratch Total			731	692	623	2046	2046
Handicap			170	170	170		510
Total			901	862	793	2046	2556
Team Points Won			1.0	1.0	1.0	4.0	4.0
Match Points Won			0.0	0.0	0.0	5.0	5.0
Total Points Won			1.0	1.0	1.0	9.0	9.0

Lane 8 5 - Dames of the Game Week 31 4/14/2023

Name	Old	Old	HDCP				
	Avg	HDCP	-1-	-2-	-3-	Total	Total
Carol J. Fenstermacher	113	78	112	123	97	332	566
Helen M. Bockerman	123	69	116	95	124	335	542
Michelle Shultheis	146	48	174	151	131	456	600
Rebecca L. McPherson	183	15	136	165	159	460	505
			====	====	====	====	====
Scratch Total			538	534	511	1583	1583
Handicap			210	210	210		630
Total			748	744	721	1583	2213
Team Points Won			0.0	0.0	0.0	0.0	0.0
Match Points Won			0.0	0.0	0.0	0.0	0.0
Total Points Won			0.0	0.0	0.0	0.0	0.0

# Pinette 2022-23

## Big Apple Fun Center

### Match Points Won (This Week) -- League Championship

Lane 7 4 - Turner Body Shop #1 Week 31 4/14/2023

Name	Last Wk Won	Last Wk Lost	HDCP -1-	HDCP -2-	HDCP -3-	HDCP Total
Beth A. Carr	1.0		219	215	202	636
Jacque L. Slagle	1.0		203	235	180	618
Wanda M. Westphalen	1.0		217	192	223	632
Nicole J. Mulroney	2.0		262	220	188	670
			====	====	====	====
Scratch Total			731	692	623	2046
Handicap			170	170	170	510
Total			901	862	793	2556
Team Points Won	1.0	1.0	1.0	1.0	1.0	4.0
Match Points Won	0.0	0.0	0.0	0.0	0.0	5.0
Total Points Won	1.0	1.0	1.0	1.0	1.0	9.0

Lane 8 5 - Dames of the Game Week 31 4/14/2023

Name	Last Wk Won	Last Wk Lost	HDCP -1-	HDCP -2-	HDCP -3-	HDCP Total
Carol J. Fenstermacher	1.0		190	201	175	566
Helen M. Bockerman	1.0		185	164	193	542
Michelle Shultheis	1.0		222	199	179	600
Rebecca L. McPherson	1.0		151	180	174	505
			====	====	====	====
Scratch Total			538	534	511	1583
Handicap			210	210	210	630
Total			748	744	721	2213
Team Points Won	0.0	0.0	0.0	0.0	0.0	0.0
Match Points Won	0.0	0.0	0.0	0.0	0.0	0.0
Total Points Won	0.0	0.0	0.0	0.0	0.0	0.0

# Pinette 2022-23

## Big Apple Fun Center

\* Bowlers listed must have a minimum of 1 games.

### Change in Average

Name	-----Old-----		Old Avg					---Average Change---			Weekly Over Avg Series Avg +/-
	Pins	Games		-1-	-2-	-3-	Total	New	Old	---> +/-	
Emilie E. Alonso	5950	48	123				0	123.96	- 123.96	= 0.00	
Helen M. Bockerman	5909	48	123	116	95	<b>124</b>	335	122.43	- 123.10	= -0.67	335 - 369=-34
DeAnn M. Brickner	11001	84	130				0	130.96	- 130.96	= 0.00	
Beth A. Carr	10693	81	132	<b>158</b>	<b>154</b>	<b>141</b>	453	132.69	- 132.01	= 0.68	453 - 396=57
Barb Farber	12125	78	155				0	155.45	- 155.45	= 0.00	
Carol J. Fenstermacher	9537	84	113	112	123	97	332	113.44	- 113.54	= -0.10	332 - 339=-7
Cindy Gibbons	9725	66	147				0	147.35	- 147.35	= 0.00	
Etha J. Griffin	7558	60	125				0	125.97	- 125.97	= 0.00	
Ashley K. Hancock	10882	75	145				0	145.09	- 145.09	= 0.00	
Kira L. Hancock	10162	75	135				0	135.49	- 135.49	= 0.00	
Trish R. Hancock	8344	66	126				0	126.42	- 126.42	= 0.00	
Deb L. Hatcher	13641	87	156				0	156.79	- 156.79	= 0.00	
Angie C. Hauserman	10520	81	129				0	129.88	- 129.88	= 0.00	
Sandy L. Hauver	6057	77	78				0	78.66	- 78.66	= 0.00	
Peg Hickman	2599	21	123				0	123.76	- 123.76	= 0.00	
Sue M. Isaac	4449	48	92				0	92.69	- 92.69	= 0.00	
Sue A. Janssen	10559	78	135				0	135.37	- 135.37	= 0.00	
Kattie L. Johnson	367	3	122				0	122.33	- 122.33	= 0.00	
Linda K. Johnson	9739	78	124				0	124.86	- 124.86	= 0.00	
Bambi L. Jones	1849	15	123				0	123.27	- 123.27	= 0.00	
Beckie S. King	9226	66	139				0	139.79	- 139.79	= 0.00	
Sheri J. Londer	7147	60	119				0	119.12	- 119.12	= 0.00	
Karen L. Lopez	4074	45	90				0	90.53	- 90.53	= 0.00	
Carrie J. Ludeke	1996	17	117				0	117.41	- 117.41	= 0.00	
Eileen M. McLaughlin	9967	75	132				0	132.89	- 132.89	= 0.00	
Lindsay L. McLaughlin	9933	72	137				0	137.96	- 137.96	= 0.00	
Rebecca L. McPherson	11010	60	183	136	165	159	460	182.06	- 183.50	= -1.44	460 - 549=-89
Allie E. Moore	8175	44	185				0	185.80	- 185.80	= 0.00	
Jacqui Moore	9335	72	129				0	129.65	- 129.65	= 0.00	
Nicole J. Mulroney	11120	66	168	<b>234</b>	<b>192</b>	<b>160</b>	586	169.65	- 168.48	= 1.17	586 - 504=82
Susan M. Ohlrich	392	3	130				0	130.67	- 130.67	= 0.00	
Tammie J. Runions	5941	45	132				0	132.02	- 132.02	= 0.00	
Gala Z. Sesna	7835	66	118				0	118.71	- 118.71	= 0.00	
Michelle Shultheis	6584	45	146	<b>174</b>	<b>151</b>	131	456	146.67	- 146.31	= 0.36	456 - 438=18
Jacquie L. Slagle	11315	75	150	<b>158</b>	<b>190</b>	135	483	151.26	- 150.87	= 0.39	483 - 450=33
Brenda J. Sonnenfeld	298	3	99				0	99.33	- 99.33	= 0.00	
Amanda A. Sparr	4006	33	121				0	121.39	- 121.39	= 0.00	

**Pinette 2022-23**

<u>Name</u>	<u>-----Old-----</u>		<u>Old</u>	<u>-1-</u>	<u>-2-</u>	<u>-3-</u>	<u>Total</u>	<u>---Average Change---</u>			<u>Weekly Over Avg</u>	
	<u>Pins</u>	<u>Games</u>	<u>Avg</u>					<u>New - Old</u>	<u>---&gt; +/-</u>	<u>Series Avg +/-</u>		
Chris M. Stockton	780	6	130				0	130.00	- 130.00	=	0.00	
Bev Walton	10485	75	139				0	139.80	- 139.80	=	0.00	
Denae L. Washington	10148	67	151				0	151.46	- 151.46	=	0.00	
Wanda M. Westphalen	12910	81	159	181	156	<b>187</b>	524	159.93	- 159.38	=	0.55	524 - 477=47

# Pinette 2022-23

## Big Apple Fun Center

\* Bowlers listed must have a minimum of 1 games.

### High Average Listing

	<u>Name</u>	<u>True Average</u>	<u>Pins</u>	<u>Gms</u>	<u>To Raise Avg +1</u>	<u>To Drop Avg -1</u>
1	Allie E. Moore	185.80	8175	44	567	519
2	Rebecca L. McPherson	182.06	11470	63	608	541
3	Nicole J. Mulroney	169.65	11706	69	534	461
4	Wanda M. Westphalen	159.93	13434	84	486	398
5	Deb L. Hatcher	156.79	13641	87	489	398
6	Barb Farber	155.45	12125	78	511	429
7	Denae L. Washington	151.46	10148	67	492	421
8	Jacque L. Slagle	151.26	11798	78	514	432
9	Cindy Gibbons	147.35	9725	66	487	417
10	Michelle Shultheis	146.67	7040	48	457	405
11	Ashley K. Hancock	145.09	10882	75	506	427
12	Bev Walton	139.80	10485	75	435	356
13	Beckie S. King	139.79	9226	66	434	364
14	Lindsay L. McLaughlin	137.96	9933	72	417	341
15	Kira L. Hancock	135.49	10162	75	446	367
16	Sue A. Janssen	135.37	10559	78	457	375
17	Eileen M. McLaughlin	132.89	9967	75	407	328
18	Beth A. Carr	132.69	11146	84	425	337
19	Tammie J. Runions	132.02	5941	45	443	394
20	DeAnn M. Brickner	130.96	11001	84	396	308
21	Susan M. Ohlrich	130.67	392	3	394	387
22	Chris M. Stockton	130.00	780	6	399	389
23	Angie C. Hauserman	129.88	10520	81	400	315
24	Jacqui Moore	129.65	9335	72	415	339
25	Trish R. Hancock	126.42	8344	66	419	349
26	Etha J. Griffin	125.97	7558	60	380	316
27	Linda K. Johnson	124.86	9739	78	386	304
28	Emilie E. Alonso	123.96	5950	48	374	322
29	Peg Hickman	123.76	2599	21	377	352
30	Bambi L. Jones	123.27	1849	15	383	364
31	Helen M. Bockerman	122.43	6244	51	398	343
32	Kattie L. Johnson	122.33	367	3	371	364
33	Amanda A. Sparr	121.39	4006	33	386	349
34	Sheri J. Londer	119.12	7147	60	413	349
35	Gala Z. Sesna	118.71	7835	66	376	306
36	Carrie J. Ludeke	117.41	1996	17	364	343
37	Carol J. Fenstermacher	113.44	9869	87	391	300
38	Brenda J. Sonnenfeld	99.33	298	3	302	295
39	Sue M. Isaac	92.69	4449	48	294	242
40	Karen L. Lopez	90.53	4074	45	294	245
41	Sandy L. Hauver	78.66	6057	77	263	182

# Pinette 2022-23

## Big Apple Fun Center

\* Bowlers listed must have a minimum of 1 games.

### Most Pins Over Average

Name	-----Old-----		Old				---Average Change---			Weekly Over Avg
	Pins	Games	Avg	-1-	-2-	-3-	Total	New - Old	---> +/-	Series Avg +/-
Nicole J. Mulroney	11120	66	168	<b>234</b>	<b>192</b>	<b>160</b>	586	169.65 - 168.48	= 1.17	586 - 504=82
Beth A. Carr	10693	81	132	<b>158</b>	<b>154</b>	<b>141</b>	453	132.69 - 132.01	= 0.68	453 - 396=57
Wanda M. Westphalen	12910	81	159	181	156	<b>187</b>	524	159.93 - 159.38	= 0.55	524 - 477=47
Jacquie L. Slagle	11315	75	150	<b>158</b>	<b>190</b>	135	483	151.26 - 150.87	= 0.39	483 - 450=33
Michelle Shultheis	6584	45	146	<b>174</b>	<b>151</b>	131	456	146.67 - 146.31	= 0.36	456 - 438=18
Carol J. Fenstermacher	9537	84	113	112	123	97	332	113.44 - 113.54	= -0.10	332 - 339=-7
Helen M. Bockerman	5909	48	123	116	95	<b>124</b>	335	122.43 - 123.10	= -0.67	335 - 369=-34
Rebecca L. McPherson	11010	60	183	136	165	159	460	182.06 - 183.50	= -1.44	460 - 549=-89

# Pinette 2022-23

## Big Apple Fun Center

This report is for scores bowled April 14 which is Week 31 of 31

### This Week's Statistics: Lefties vs Righties

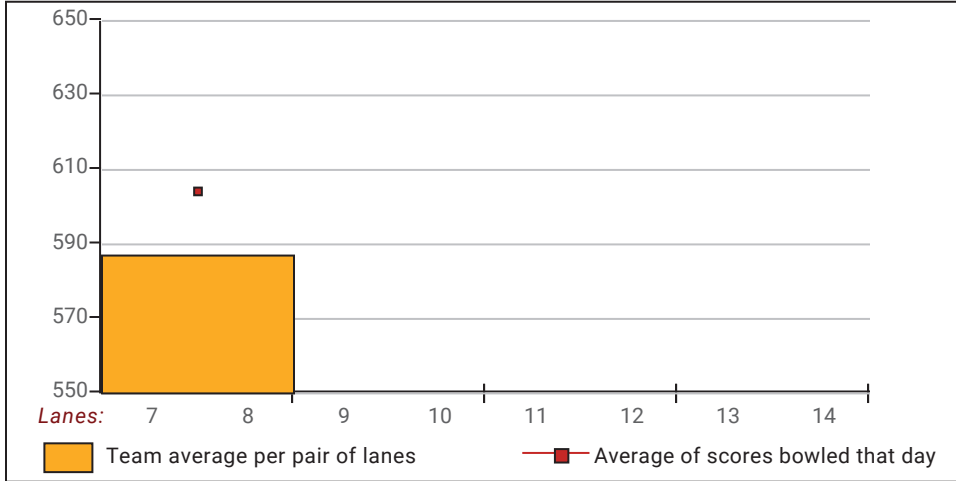
Unless designated left handed, bowlers are considered right handed.

	Over All	Right	Left
How many people bowled	8	8	0
Number of games bowled	24	24	0
Actual average of week's scores	151.21	151.21	0.00
How many games above average	13	13	0
How many games below average	11	11	0
Pins above/below average per game	4.46	4.46	0.00
How many people raised average	5	5	--
by this amount	0.63	0.63	0.00
How many people went down	3	3	--
by this amount	-0.74	-0.74	0.00
League average before bowling	147.15	147.15	0.00
League average after bowling	147.27	147.27	0.00
Change in league average	0.12	0.12	0.00
800s	--	--	--
775s	--	--	--
750s	--	--	--
725s	--	--	--
700s	--	--	--
675s	--	--	--
650s	--	--	--
625s	--	--	--
600s	--	--	--
575s	1	1	--
550s	--	--	--
525s	--	--	--
500s	1	1	--
475s	1	1	--
450s	3	3	--
425s	--	--	--
400s	--	--	--
below 400	2	2	--
300s	--	--	--
275s	--	--	--
250s	--	--	--
225s	1	1	--
200s	--	--	--
175s	4	4	--
150s	9	9	--
125s	4	4	--
100s	4	4	--
below 100	2	2	--

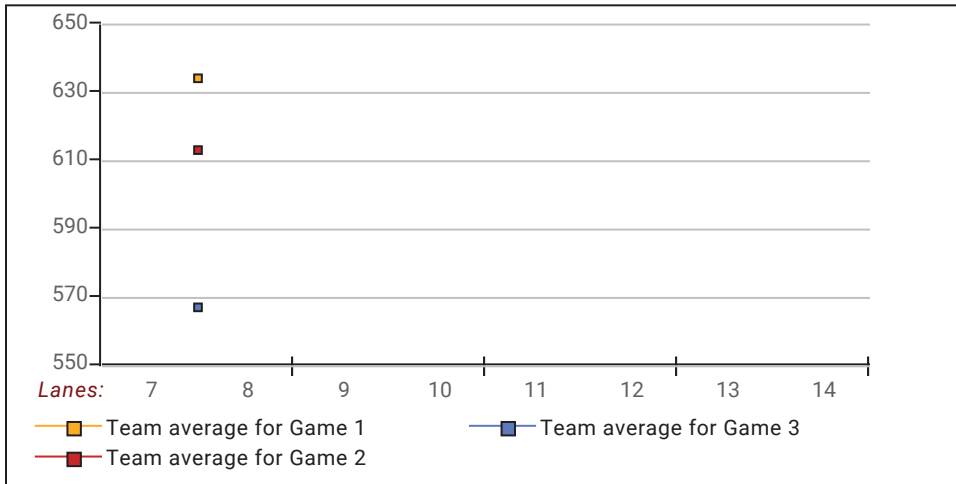


This report is for scores bowled April 14 which is Week 31 of 31

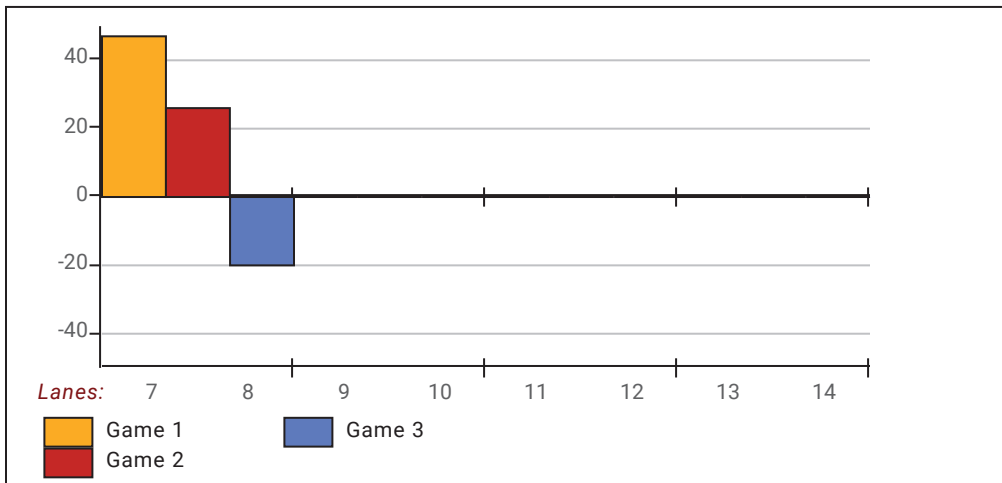
**Team Average vs Avg of Scores**



**Average of Scores for Each Game**

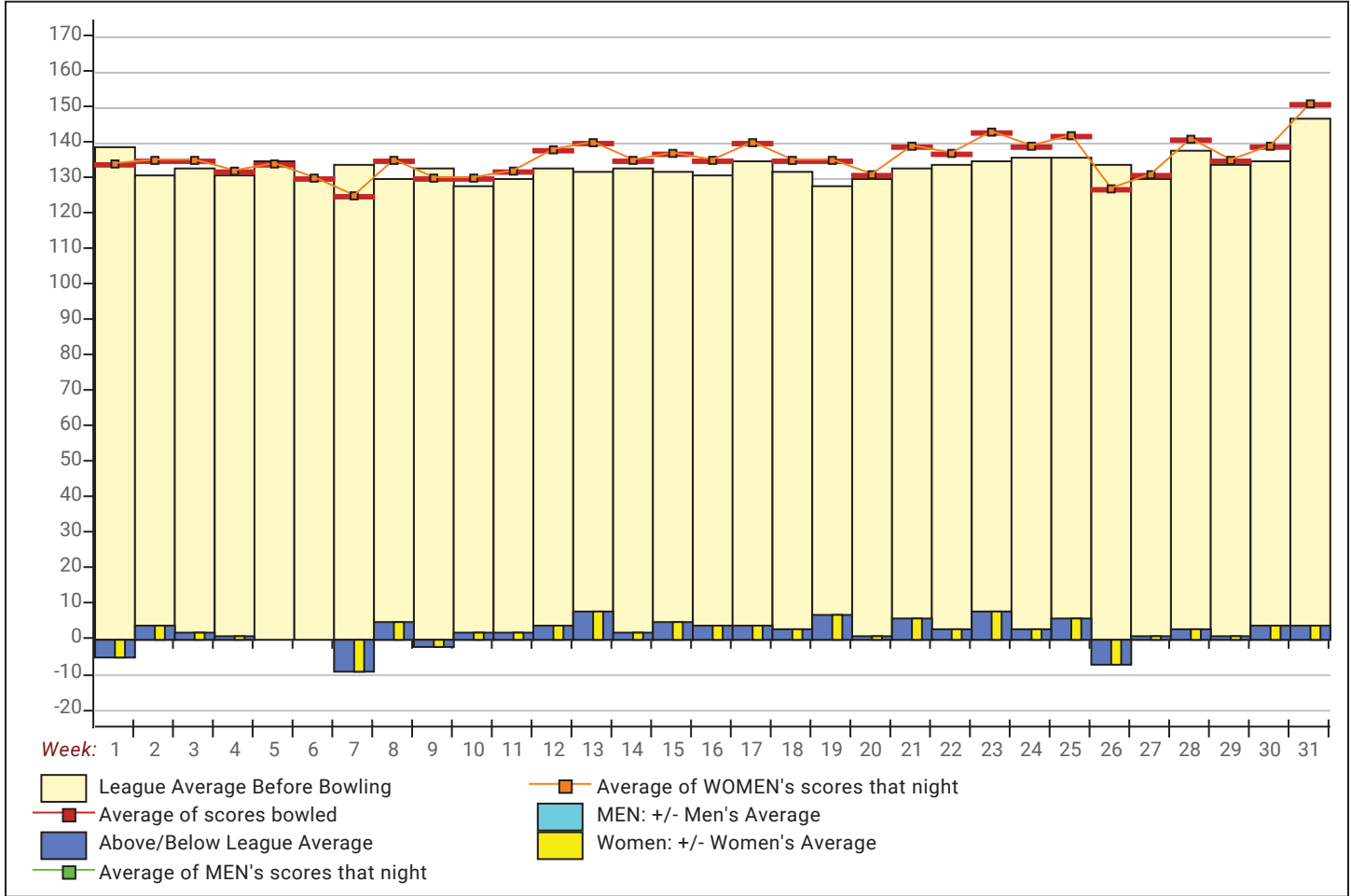


**Amount Over/Under Team Average**



This report is for scores bowled April 14 which is Week 31 of 31

**League Average Week-by-Week**



**League Average Statistics for Last Week**

	League	Right Hand	Left Hand
League Average Before Bowling	147.15	147.15	
Average of scores bowled that night	151.21	151.21	
New League Average After Bowling	147.27	147.27	
Change in League Average	.12	.12	
People Who Bowled Over Average	5	5	
People Who Bowled Under Average	3	3	
Average Amount of Series Over Avg	47.40	47.40	
Average Amount of Series Under Avg	-43.33	-43.33	
Difference Avg, NiteAvg	4.46	4.46	
Number of Bowlers	8	8	
Number of Games Bowled	24	24	
People Who Raised Their Average	5	5	
Raised By an Average of This Amount	.63	.63	
People Who Lowered Their Average	3	3	
Lowered By an Average of This Amou	-.74	-.74	
Number of Games Bowled Over Avera	13	13	
Number of Games Bowled Under Avera	11	11	

*Note: Averages are based only on people who bowled.*

# Press Release -- 4/16/2023

4/14/2023 Week 31 of 31

## Pinette 2022-23

Friday 6:30 pm

### Big Apple Fun Center League Championship

Lanes 7 - 8

Place	Team Name	Avg p/gm	Points Won	Points Lost
1	Turner Body Shop #1	576	9	0
2	Dames of the Game	542	0	9

### Last Week's Top Scores

Scratch Game		Scratch Series		Handicap Game		Handicap Series	
234	Nicole Mulroney	586	Nicole Mulroney	262	Nicole Mulroney	670	Nicole Mulroney
190	Jacquie Slagle	524	Wanda Westphalen	235	Jacquie Slagle	636	Beth Carr
187	Wanda Westphalen	483	Jacquie Slagle	223	Wanda Westphalen	632	Wanda Westphalen
174	Michelle Shultheis	460	Rebecca McPherson	222	Michelle Shultheis	618	Jacquie Slagle
165	Rebecca McPherson	456	Michelle Shultheis	219	Beth Carr	600	Michelle Shultheis
158	Beth Carr	453	Beth Carr	201	Carol Fenstermacher	566	Carol Fenstermacher
124	Helen Bockerman	335	Helen Bockerman	193	Helen Bockerman	542	Helen Bockerman
123	Carol Fenstermacher	332	Carol Fenstermacher	180	Rebecca McPherson	505	Rebecca McPherson

### Local and Bowling Center Awards

Name	USBC ID Number	Award Average	Award Games	G1	G2	G3	Series	Award Score	Award Received
Nicole J. Mulroney	4132-647 USBC	168	66	234	192	160	586	234	225 Game (Local Assoc. Awards)